

Acta Crystallographica Section E

## Structure Reports

Online

ISSN 1600-5368

# {(E)-2-Bromo-4-chloro-6-[3-(dimethylammonio)propyliminomethyl]-phenolato}dichloridozinc(II)

 Li-Juan Ye<sup>a\*</sup> and Zhonglu You<sup>b</sup>

<sup>a</sup>Department of Chemistry and Life Sciences, Xiangnan University, Chenzhou 423000, People's Republic of China, and <sup>b</sup>Department of Chemistry, Liaoning Teachers' University, Dalian 116029, People's Republic of China  
Correspondence e-mail: lijuan\_ye@163.com

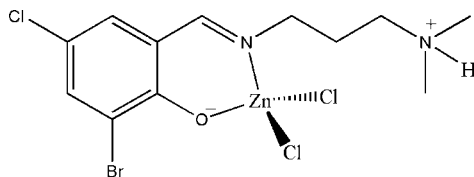
Received 27 May 2008; accepted 29 May 2008

Key indicators: single-crystal X-ray study;  $T = 298$  K; mean  $\sigma(\text{C}-\text{C}) = 0.008$  Å;  $R$  factor = 0.049;  $wR$  factor = 0.127; data-to-parameter ratio = 19.5.

The title compound,  $[\text{ZnCl}_2(\text{C}_{12}\text{H}_{16}\text{BrClN}_2\text{O})]$ , is a mononuclear zinc(II) complex. The  $\text{Zn}^{\text{II}}$  atom is four-coordinate in a tetrahedral geometry, binding to the phenolate O and imine N atoms of the zwitterionic Schiff base ligand and to two  $\text{Cl}^-$  ions. In the crystal structure, molecules are linked through intermolecular  $\text{N}-\text{H}\cdots\text{Cl}$  hydrogen bonds to form chains running along the  $a$  axis.

## Related literature

For related structures, see: Ali *et al.* (2008); Wang (2007); You (2005). For our recent investigations of metal complex systems, see: Ye & You (2007*a,b,c*).



## Experimental

## Crystal data

$[\text{ZnCl}_2(\text{C}_{12}\text{H}_{16}\text{BrClN}_2\text{O})]$   
 $M_r = 455.90$   
 Monoclinic,  $P2_1/c$   
 $a = 7.522$  (4) Å  
 $b = 26.808$  (15) Å  
 $c = 8.354$  (4) Å  
 $\beta = 90.921$  (9)°

$V = 1684.3$  (16) Å<sup>3</sup>  
 $Z = 4$   
 Mo  $K\alpha$  radiation  
 $\mu = 4.30$  mm<sup>-1</sup>  
 $T = 298$  (2) K  
 $0.32 \times 0.30 \times 0.30$  mm

## Data collection

Bruker SMART CCD area-detector diffractometer  
 Absorption correction: multi-scan (SADABS; Sheldrick, 1996)  
 $T_{\text{min}} = 0.261$ ,  $T_{\text{max}} = 0.275$   
 9470 measured reflections  
 3633 independent reflections  
 2283 reflections with  $I > 2\sigma(I)$   
 $R_{\text{int}} = 0.037$

## Refinement

$R[F^2 > 2\sigma(F^2)] = 0.048$   
 $wR(F^2) = 0.126$   
 $S = 1.04$   
 3633 reflections  
 186 parameters  
 1 restraint  
 H atoms treated by a mixture of independent and constrained refinement  
 $\Delta\rho_{\text{max}} = 0.58$  e Å<sup>-3</sup>  
 $\Delta\rho_{\text{min}} = -0.36$  e Å<sup>-3</sup>

Table 1

Selected geometric parameters (Å, °).

|            |             |             |             |
|------------|-------------|-------------|-------------|
| Zn1—O1     | 1.931 (4)   | Zn1—Cl2     | 2.2303 (19) |
| Zn1—N1     | 1.999 (4)   | Zn1—Cl3     | 2.2489 (19) |
| O1—Zn1—N1  | 95.48 (17)  | O1—Zn1—Cl3  | 110.85 (13) |
| O1—Zn1—Cl2 | 112.60 (13) | N1—Zn1—Cl3  | 114.71 (13) |
| N1—Zn1—Cl2 | 112.04 (14) | Cl2—Zn1—Cl3 | 110.45 (8)  |

Table 2

Hydrogen-bond geometry (Å, °).

| $D-\text{H}\cdots A$                    | $D-\text{H}$ | $\text{H}\cdots A$ | $D\cdots A$ | $D-\text{H}\cdots A$ |
|---|--------------|--------------------|-------------|----------------------|
| $\text{N2}-\text{H2}\cdots\text{Cl3}^i$ | 0.91 (5)     | 2.37 (3)           | 3.190 (5)   | 152 (5)              |

 Symmetry code: (i)  $x + 1, y, z$ .

Data collection: SMART (Bruker, 2002); cell refinement: SAINT (Bruker, 2002); data reduction: SAINT; program(s) used to solve structure: SHELXTL (Sheldrick, 2008); program(s) used to refine structure: SHELXTL; molecular graphics: SHELXTL; software used to prepare material for publication: SHELXTL.

Financial support from the Hunan Provincial Natural Sciences Foundation of China (grant No. 03JJY3019) and the Hunan Provincial Educational Ministry Foundation of China (grant No. 05 C627) is acknowledged.

Supplementary data and figures for this paper are available from the IUCr electronic archives (Reference: SJ2511).

## References

- Ali, H. M., Mohamed Mustafa, M. I., Rizal, M. R. & Ng, S. W. (2008). *Acta Cryst.* **E64**, m718–m719.  
 Bruker (2002). SMART and SAINT. Bruker AXS Inc., Madison, Wisconsin, USA.  
 Sheldrick, G. M. (1996). SADABS. University of Göttingen, Germany.  
 Sheldrick, G. M. (2008). *Acta Cryst.* **A64**, 112–122.  
 Wang, S.-X. (2007). *Acta Cryst.* **E63**, m706–m707.  
 Ye, L.-J. & You, Z. (2007*a*). *Acta Cryst.* **E63**, m523–m525.  
 Ye, L.-J. & You, Z. (2007*b*). *Acta Cryst.* **E63**, m1837.  
 Ye, L.-J. & You, Z. (2007*c*). *Acta Cryst.* **E63**, m3137.  
 You, Z.-L. (2005). *Acta Cryst.* **E61**, m2416–m2418.

## supporting information

*Acta Cryst.* (2008). E64, m869 [doi:10.1107/S1600536808016255]

**{(E)-2-Bromo-4-chloro-6-[3-(dimethylammonio)propyliminomethyl]-phenolato}dichloridozinc(II)**

**Li-Juan Ye and Zhonglu You**

**S1. Comment**

Recently, we have reported thiocyanate coordinated zinc(II) (Ye & You, 2007a), and copper(II) complexes (Ye & You, 2007b), and a chlorido-bridged polynuclear copper(II) complex (Ye & You, 2007c). As an extension of the work on the crystal structures of such complexes, we report herein the crystal structure of the title compound, (I), Fig. 1.

Compound (I) is a mononuclear zinc(II) complex. The Zn<sup>II</sup> atom is four-coordinate in a tetrahedral geometry, binding to the phenolate O and imine N atoms of the zwitterionic Schiff base ligand and two Cl<sup>-</sup> ions. The coordinate bond values (Table 1) are comparable to those reported in other similar zinc(II) complexes (Wang, 2007; Ali *et al.*, 2008; You, 2005).

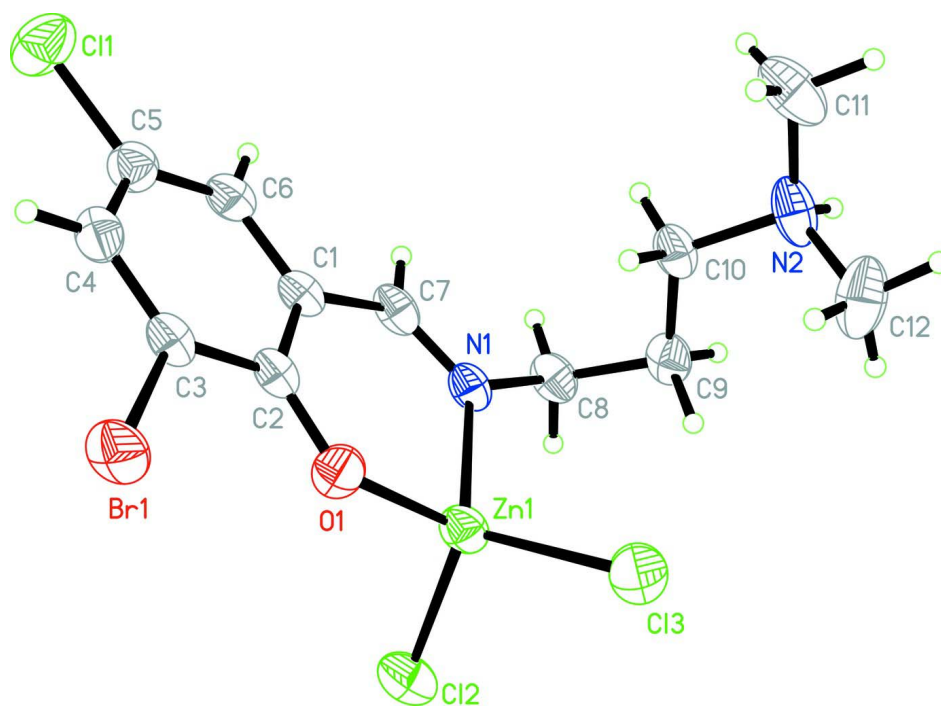
In the crystal structure, molecules are linked through intermolecular N–H···Cl hydrogen bonds, Table 2, to form chains running along the *a* axis (Fig. 2).

**S2. Experimental**

3-Bromo-5-chlorosalicylaldehyde (0.1 mmol, 23.5 mg), *N,N*-dimethylpropane-1,3-diamine (0.1 mmol, 10.2 mg), and zinc(II) chloride (0.1 mmol, 13.6 mg) were dissolved in a methanol solution (10 ml). The mixture was stirred at room temperature for 30 min to give a clear colorless solution. Crystals of the compound were formed by slow evaporation of the solvent over a week at room temperature.

**S3. Refinement**

Atom H2 on the amine N2 atom was located from a difference Fourier map and refined isotropically, with the N–H distance restrained to 0.90 (1) Å, and with  $U_{\text{iso}}(\text{H})$  fixed at 0.08 Å<sup>2</sup>. The remaining H atoms were placed in geometrically idealized positions and constrained to ride on their parent atoms with C–H distances in the range 0.93–0.97 Å, and with  $U_{\text{iso}}(\text{H}) = 1.2$  or  $1.5U_{\text{eq}}(\text{C})$ .

**Figure 1**

Molecular structure of (I) with displacement ellipsoids drawn at the 30% probability level.

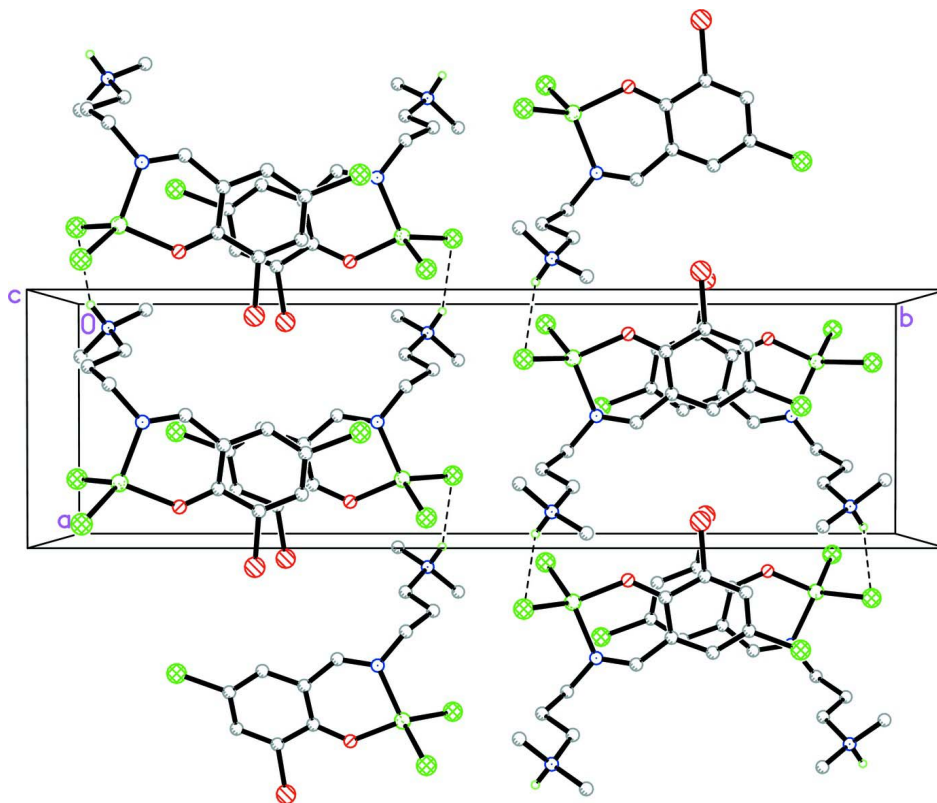


Figure 2

Molecular packing of (I). Intermolecular hydrogen bonds are shown as dashed lines.

**{(E)-2-Bromo-4-chloro-6-[3-(dimethylammonio)propyliminomethyl]phenolato}dichloridozinc(II)**

*Crystal data*

[ZnCl<sub>2</sub>(C<sub>12</sub>H<sub>16</sub>BrClN<sub>2</sub>O)]

*M<sub>r</sub>* = 455.90

Monoclinic, *P*2<sub>1</sub>/*c*

Hall symbol: -*P* 2ybc

*a* = 7.522 (4) Å

*b* = 26.808 (15) Å

*c* = 8.354 (4) Å

$\beta$  = 90.921 (9)°

*V* = 1684.3 (16) Å<sup>3</sup>

*Z* = 4

*F*(000) = 904

*D<sub>x</sub>* = 1.798 Mg m<sup>-3</sup>

Mo *K*α radiation,  $\lambda$  = 0.71073 Å

Cell parameters from 1372 reflections

$\theta$  = 2.3–25.3°

$\mu$  = 4.30 mm<sup>-1</sup>

*T* = 298 K

Block, colorless

0.32 × 0.30 × 0.30 mm

*Data collection*

Bruker SMART CCD area-detector  
diffractometer

Radiation source: fine-focus sealed tube

Graphite monochromator

$\omega$  scans

Absorption correction: multi-scan  
(*SADABS*; Sheldrick, 1996)

*T<sub>min</sub>* = 0.261, *T<sub>max</sub>* = 0.275

9470 measured reflections

3633 independent reflections

2283 reflections with *I* > 2σ(*I*)

*R<sub>int</sub>* = 0.037

$\theta_{\max}$  = 27.0°,  $\theta_{\min}$  = 1.5°

*h* = -9→9

*k* = -32→34

*l* = -10→7

*Refinement*

Refinement on *F*<sup>2</sup>

Least-squares matrix: full

$R[F^2 > 2\sigma(F^2)] = 0.048$

*wR*(*F*<sup>2</sup>) = 0.126

*S* = 1.04

3633 reflections

186 parameters

1 restraint

Primary atom site location: structure-invariant  
direct methods

Secondary atom site location: difference Fourier  
map

Hydrogen site location: inferred from  
neighbouring sites

H atoms treated by a mixture of independent  
and constrained refinement

$w = 1/[\sigma^2(F_o^2) + (0.0506P)^2 + 2.1641P]$

where  $P = (F_o^2 + 2F_c^2)/3$

( $\Delta/\sigma$ )<sub>max</sub> = 0.001

$\Delta\rho_{\max} = 0.58 \text{ e } \text{Å}^{-3}$

$\Delta\rho_{\min} = -0.36 \text{ e } \text{Å}^{-3}$

*Special details*

**Geometry.** All e.s.d.'s (except the e.s.d. in the dihedral angle between two l.s. planes) are estimated using the full covariance matrix. The cell e.s.d.'s are taken into account individually in the estimation of e.s.d.'s in distances, angles and torsion angles; correlations between e.s.d.'s in cell parameters are only used when they are defined by crystal symmetry. An approximate (isotropic) treatment of cell e.s.d.'s is used for estimating e.s.d.'s involving l.s. planes.

**Refinement.** Refinement of *F*<sup>2</sup> against ALL reflections. The weighted *R*-factor *wR* and goodness of fit *S* are based on *F*<sup>2</sup>, conventional *R*-factors *R* are based on *F*, with *F* set to zero for negative *F*<sup>2</sup>. The threshold expression of *F*<sup>2</sup> > σ(*F*<sup>2</sup>) is used only for calculating *R*-factors(gt) etc. and is not relevant to the choice of reflections for refinement. *R*-factors based on *F*<sup>2</sup> are statistically about twice as large as those based on *F*, and *R*-factors based on ALL data will be even larger.

*Fractional atomic coordinates and isotropic or equivalent isotropic displacement parameters (Å<sup>2</sup>)*

|     | <i>x</i>    | <i>y</i>    | <i>z</i>    | <i>U<sub>iso</sub></i> */ <i>U<sub>eq</sub></i> |
|-----|-------------|-------------|-------------|---|
| Zn1 | 0.25129 (8) | 0.59843 (2) | 0.53367 (8) | 0.0531 (2)                                      |

|      |              |              |              |             |
|------|--------------|--------------|--------------|-------------|
| Br1  | -0.09048 (7) | 0.73965 (3)  | 0.73104 (8)  | 0.0691 (2)  |
| Cl1  | 0.4472 (2)   | 0.86120 (6)  | 0.5360 (2)   | 0.0868 (6)  |
| Cl2  | 0.1025 (2)   | 0.56893 (7)  | 0.32087 (19) | 0.0748 (5)  |
| Cl3  | 0.2609 (2)   | 0.54111 (6)  | 0.7302 (2)   | 0.0718 (4)  |
| O1   | 0.1550 (5)   | 0.66062 (14) | 0.6102 (5)   | 0.0592 (10) |
| N1   | 0.4876 (5)   | 0.62653 (18) | 0.4750 (5)   | 0.0485 (10) |
| N2   | 0.8671 (7)   | 0.5717 (2)   | 0.8271 (6)   | 0.0708 (15) |
| C1   | 0.3975 (6)   | 0.7126 (2)   | 0.5273 (6)   | 0.0465 (12) |
| C2   | 0.2268 (6)   | 0.7039 (2)   | 0.5936 (6)   | 0.0464 (12) |
| C3   | 0.1364 (6)   | 0.7472 (2)   | 0.6440 (6)   | 0.0499 (13) |
| C4   | 0.2038 (7)   | 0.7947 (2)   | 0.6301 (6)   | 0.0554 (14) |
| H4   | 0.1408       | 0.8221       | 0.6675       | 0.066*      |
| C5   | 0.3661 (7)   | 0.8009 (2)   | 0.5599 (7)   | 0.0561 (14) |
| C6   | 0.4609 (7)   | 0.7608 (2)   | 0.5106 (7)   | 0.0545 (14) |
| H6   | 0.5712       | 0.7658       | 0.4645       | 0.065*      |
| C7   | 0.5140 (6)   | 0.6730 (2)   | 0.4739 (6)   | 0.0501 (13) |
| H7   | 0.6226       | 0.6832       | 0.4335       | 0.060*      |
| C8   | 0.6332 (7)   | 0.5932 (2)   | 0.4223 (7)   | 0.0566 (14) |
| H8A  | 0.7281       | 0.6131       | 0.3776       | 0.068*      |
| H8B  | 0.5886       | 0.5709       | 0.3394       | 0.068*      |
| C9   | 0.7047 (7)   | 0.5631 (2)   | 0.5607 (7)   | 0.0562 (14) |
| H9A  | 0.8007       | 0.5420       | 0.5245       | 0.067*      |
| H9B  | 0.6115       | 0.5418       | 0.6012       | 0.067*      |
| C10  | 0.7721 (7)   | 0.5967 (2)   | 0.6924 (6)   | 0.0557 (14) |
| H10A | 0.8515       | 0.6211       | 0.6462       | 0.067*      |
| H10B | 0.6717       | 0.6147       | 0.7353       | 0.067*      |
| C11  | 0.9452 (10)  | 0.6088 (3)   | 0.9358 (8)   | 0.094 (2)   |
| H11A | 1.0131       | 0.6323       | 0.8755       | 0.140*      |
| H11B | 1.0216       | 0.5924       | 1.0125       | 0.140*      |
| H11C | 0.8522       | 0.6259       | 0.9906       | 0.140*      |
| C12  | 0.7535 (10)  | 0.5353 (3)   | 0.9111 (9)   | 0.092 (2)   |
| H12A | 0.8145       | 0.5236       | 1.0058       | 0.137*      |
| H12B | 0.7283       | 0.5075       | 0.8417       | 0.137*      |
| H12C | 0.6442       | 0.5510       | 0.9404       | 0.137*      |
| H2   | 0.957 (6)    | 0.5538 (19)  | 0.785 (7)    | 0.080*      |

Atomic displacement parameters ( $\text{\AA}^2$ )

|     | $U^{11}$    | $U^{22}$    | $U^{33}$    | $U^{12}$    | $U^{13}$    | $U^{23}$    |
|-----|-------------|-------------|-------------|-------------|-------------|-------------|
| Zn1 | 0.0387 (3)  | 0.0640 (4)  | 0.0565 (4)  | 0.0016 (3)  | 0.0037 (3)  | 0.0026 (3)  |
| Br1 | 0.0423 (3)  | 0.0841 (5)  | 0.0814 (5)  | 0.0067 (3)  | 0.0171 (3)  | -0.0044 (4) |
| Cl1 | 0.0821 (12) | 0.0638 (10) | 0.1152 (15) | -0.0146 (9) | 0.0261 (10) | 0.0035 (10) |
| Cl2 | 0.0598 (9)  | 0.1019 (13) | 0.0625 (10) | -0.0042 (9) | -0.0082 (7) | -0.0015 (9) |
| Cl3 | 0.0628 (9)  | 0.0818 (11) | 0.0713 (10) | 0.0011 (8)  | 0.0118 (7)  | 0.0115 (9)  |
| O1  | 0.045 (2)   | 0.056 (2)   | 0.077 (3)   | 0.0007 (18) | 0.0174 (18) | 0.005 (2)   |
| N1  | 0.033 (2)   | 0.062 (3)   | 0.051 (3)   | 0.009 (2)   | 0.0019 (18) | 0.003 (2)   |
| N2  | 0.057 (3)   | 0.095 (4)   | 0.061 (3)   | 0.035 (3)   | 0.007 (2)   | 0.016 (3)   |
| C1  | 0.033 (2)   | 0.064 (3)   | 0.042 (3)   | 0.002 (2)   | -0.002 (2)  | 0.001 (3)   |

|     |           |           |           |            |            |            |
|-----|-----------|-----------|-----------|------------|------------|------------|
| C2  | 0.034 (2) | 0.062 (4) | 0.043 (3) | 0.006 (2)  | -0.002 (2) | 0.005 (3)  |
| C3  | 0.036 (3) | 0.067 (4) | 0.046 (3) | 0.006 (2)  | 0.000 (2)  | 0.006 (3)  |
| C4  | 0.056 (3) | 0.058 (4) | 0.052 (3) | 0.009 (3)  | -0.004 (3) | -0.001 (3) |
| C5  | 0.050 (3) | 0.060 (4) | 0.058 (4) | -0.002 (3) | 0.001 (3)  | 0.004 (3)  |
| C6  | 0.039 (3) | 0.070 (4) | 0.055 (3) | -0.003 (3) | -0.002 (2) | 0.004 (3)  |
| C7  | 0.032 (2) | 0.077 (4) | 0.041 (3) | 0.008 (3)  | 0.006 (2)  | 0.008 (3)  |
| C8  | 0.040 (3) | 0.072 (4) | 0.058 (4) | 0.014 (3)  | 0.006 (2)  | -0.004 (3) |
| C9  | 0.040 (3) | 0.061 (3) | 0.068 (4) | 0.014 (3)  | 0.011 (3)  | 0.000 (3)  |
| C10 | 0.041 (3) | 0.072 (4) | 0.054 (3) | 0.011 (3)  | 0.002 (2)  | 0.012 (3)  |
| C11 | 0.081 (5) | 0.155 (7) | 0.044 (4) | 0.008 (5)  | -0.010 (3) | -0.003 (4) |
| C12 | 0.109 (6) | 0.084 (5) | 0.083 (5) | 0.028 (4)  | 0.034 (4)  | 0.031 (4)  |

*Geometric parameters (Å, °)*

|             |             |            |           |
|-------------|-------------|------------|-----------|
| Zn1—O1      | 1.931 (4)   | C4—H4      | 0.9300    |
| Zn1—N1      | 1.999 (4)   | C5—C6      | 1.359 (8) |
| Zn1—Cl2     | 2.2303 (19) | C6—H6      | 0.9300    |
| Zn1—Cl3     | 2.2489 (19) | C7—H7      | 0.9300    |
| Br1—C3      | 1.877 (5)   | C8—C9      | 1.502 (8) |
| Cl1—C5      | 1.740 (6)   | C8—H8A     | 0.9700    |
| O1—C2       | 1.288 (6)   | C8—H8B     | 0.9700    |
| N1—C7       | 1.261 (7)   | C9—C10     | 1.504 (8) |
| N1—C8       | 1.485 (6)   | C9—H9A     | 0.9700    |
| N2—C11      | 1.464 (9)   | C9—H9B     | 0.9700    |
| N2—C12      | 1.482 (8)   | C10—H10A   | 0.9700    |
| N2—C10      | 1.483 (7)   | C10—H10B   | 0.9700    |
| N2—H2       | 0.91 (5)    | C11—H11A   | 0.9600    |
| C1—C6       | 1.385 (8)   | C11—H11B   | 0.9600    |
| C1—C2       | 1.425 (7)   | C11—H11C   | 0.9600    |
| C1—C7       | 1.451 (7)   | C12—H12A   | 0.9600    |
| C2—C3       | 1.413 (7)   | C12—H12B   | 0.9600    |
| C3—C4       | 1.375 (8)   | C12—H12C   | 0.9600    |
| C4—C5       | 1.372 (8)   |            |           |
| O1—Zn1—N1   | 95.48 (17)  | N1—C7—C1   | 128.6 (5) |
| O1—Zn1—Cl2  | 112.60 (13) | N1—C7—H7   | 115.7     |
| N1—Zn1—Cl2  | 112.04 (14) | C1—C7—H7   | 115.7     |
| O1—Zn1—Cl3  | 110.85 (13) | N1—C8—C9   | 110.6 (4) |
| N1—Zn1—Cl3  | 114.71 (13) | N1—C8—H8A  | 109.5     |
| Cl2—Zn1—Cl3 | 110.45 (8)  | C9—C8—H8A  | 109.5     |
| C2—O1—Zn1   | 125.6 (3)   | N1—C8—H8B  | 109.5     |
| C7—N1—C8    | 118.4 (4)   | C9—C8—H8B  | 109.5     |
| C7—N1—Zn1   | 121.0 (3)   | H8A—C8—H8B | 108.1     |
| C8—N1—Zn1   | 120.6 (4)   | C8—C9—C10  | 110.7 (5) |
| C11—N2—C12  | 112.5 (6)   | C8—C9—H9A  | 109.5     |
| C11—N2—C10  | 110.3 (5)   | C10—C9—H9A | 109.5     |
| C12—N2—C10  | 112.5 (5)   | C8—C9—H9B  | 109.5     |
| C11—N2—H2   | 108 (4)     | C10—C9—H9B | 109.5     |

|           |           |               |           |
|-----------|-----------|---------------|-----------|
| C12—N2—H2 | 106 (4)   | H9A—C9—H9B    | 108.1     |
| C10—N2—H2 | 107 (4)   | N2—C10—C9     | 115.9 (5) |
| C6—C1—C2  | 120.3 (5) | N2—C10—H10A   | 108.3     |
| C6—C1—C7  | 116.1 (5) | C9—C10—H10A   | 108.3     |
| C2—C1—C7  | 123.6 (5) | N2—C10—H10B   | 108.3     |
| O1—C2—C3  | 120.3 (4) | C9—C10—H10B   | 108.3     |
| O1—C2—C1  | 124.7 (5) | H10A—C10—H10B | 107.4     |
| C3—C2—C1  | 115.0 (5) | N2—C11—H11A   | 109.5     |
| C4—C3—C2  | 123.7 (5) | N2—C11—H11B   | 109.5     |
| C4—C3—Br1 | 118.2 (4) | H11A—C11—H11B | 109.5     |
| C2—C3—Br1 | 118.1 (4) | N2—C11—H11C   | 109.5     |
| C5—C4—C3  | 118.7 (5) | H11A—C11—H11C | 109.5     |
| C5—C4—H4  | 120.7     | H11B—C11—H11C | 109.5     |
| C3—C4—H4  | 120.7     | N2—C12—H12A   | 109.5     |
| C6—C5—C4  | 120.5 (5) | N2—C12—H12B   | 109.5     |
| C6—C5—C11 | 121.0 (4) | H12A—C12—H12B | 109.5     |
| C4—C5—C11 | 118.5 (5) | N2—C12—H12C   | 109.5     |
| C5—C6—C1  | 121.7 (5) | H12A—C12—H12C | 109.5     |
| C5—C6—H6  | 119.2     | H12B—C12—H12C | 109.5     |
| C1—C6—H6  | 119.2     |               |           |

*Hydrogen-bond geometry (Å, °)*

| <i>D</i> —H $\cdots$ <i>A</i>   | <i>D</i> —H | H $\cdots$ <i>A</i> | <i>D</i> $\cdots$ <i>A</i> | <i>D</i> —H $\cdots$ <i>A</i> |
|---------------------------------|-------------|---------------------|----------------------------|-------------------------------|
| N2—H2 $\cdots$ Cl3 <sup>i</sup> | 0.91 (5)    | 2.37 (3)            | 3.190 (5)                  | 152 (5)                       |

Symmetry code: (i)  $x+1, y, z$ .