

Acta Crystallographica Section E

Structure Reports

Online

ISSN 1600-5368

(4-Hydroxy-2-oxidobenzaldehyde thiosemicarbazonato- κ^3O^2, N^1, S)-(1,10-phenanthroline- κ^2N, N')zinc(II) dimethyl sulfoxide disolvate monohydrate

 Kong Wai Tan,^a Chew Hee Ng,^b Mohd Jamil Maah^{c*} and Seik Weng Ng^c

^aDepartment of Chemistry, University of Malaya, 50603 Kuala Lumpur, Malaysia, ^bFaculty of Engineering and Science, Universiti Tunku Abdul Rahman, 53300 Kuala Lumpur, Malaysia, and ^cDepartment of Chemistry, University of Malaya, 50603 Kuala Lumpur, Malaysia
Correspondence e-mail: mjamil@um.edu.my

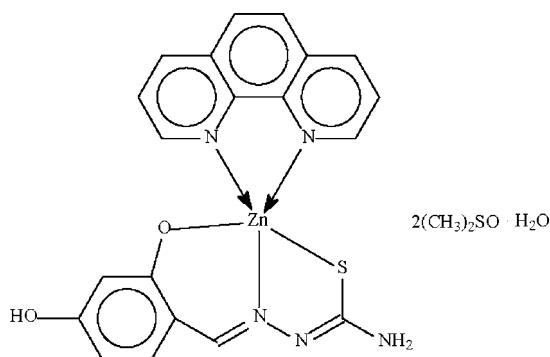
Received 3 December 2008; accepted 9 December 2008

Key indicators: single-crystal X-ray study; $T = 100$ K; mean $\sigma(C-C) = 0.009$ Å; disorder in solvent or counterion; R factor = 0.074; wR factor = 0.211; data-to-parameter ratio = 17.8.

The Zn^{II} atom in the title compound, $[Zn(C_8H_7N_3O_2S)(C_{12}H_8N_2)] \cdot 2C_2H_6OS \cdot H_2O$, is N, N' -chelated by the N -heterocycle and N, O, S -chelated by the deprotonated Schiff base in a distorted square-pyramidal environment. Hydrogen bonds link the mononuclear molecule, the water and the dimethyl sulfoxide (DMSO) molecules into a linear chain motif. One DMSO molecule is disordered over two positions in respect of the S atom in an approximate 1:1 ratio.

Related literature

For reports of the metal derivatives of 2,4-dihydroxybenzaldehyde thiosemicarbazone, see: Broomhead & Dwyer (1961); Gingras *et al.* (1960); Liu *et al.* (1974); Luo *et al.* (1988); Mayadeo *et al.* (1986); Onuska *et al.* (1996); Shen & Li (2006); Zhu *et al.* (1991a,b).



Experimental

Crystal data

$[Zn(C_8H_7N_3O_2S)(C_{12}H_8N_2)] \cdot 2C_2H_6OS \cdot H_2O$
 $M_r = 629.07$
 Triclinic, $P\bar{1}$
 $a = 9.3582$ (5) Å
 $b = 9.8181$ (5) Å
 $c = 15.2913$ (8) Å
 $\alpha = 73.641$ (3)°
 $\beta = 82.482$ (4)°
 $\gamma = 88.059$ (4)°
 $V = 1336.5$ (1) Å³
 $Z = 2$
 Mo $K\alpha$ radiation
 $\mu = 1.20$ mm⁻¹
 $T = 100$ (2) K
 $0.05 \times 0.01 \times 0.01$ mm

Data collection

Bruker SMART APEX diffractometer
 Absorption correction: multi-scan (*SADABS*; Sheldrick, 1996)
 $T_{min} = 0.943$, $T_{max} = 0.988$
 12760 measured reflections
 6125 independent reflections
 3397 reflections with $I > 2\sigma(I)$
 $R_{int} = 0.097$

Refinement

$R[F^2 > 2\sigma(F^2)] = 0.074$
 $wR(F^2) = 0.211$
 $S = 0.98$
 6125 reflections
 344 parameters
 27 restraints
 H-atom parameters constrained
 $\Delta\rho_{max} = 1.51$ e Å⁻³
 $\Delta\rho_{min} = -1.29$ e Å⁻³

Table 1

Hydrogen-bond geometry (Å, °).

$D-H \cdots A$	$D-H$	$H \cdots A$	$D \cdots A$	$D-H \cdots A$
$O2-H2 \cdots O3$	0.84	1.84	2.679 (6)	172
$N3-H31 \cdots N2^i$	0.88	2.11	2.984 (8)	174
$N3-H32 \cdots O4$	0.88	2.33	3.074 (8)	143
$O1w-H1w1 \cdots O1^{ii}$	0.84	2.11	2.911 (7)	160
$O1w-H1w2 \cdots O2$	0.84	2.25	3.055 (7)	161

Symmetry codes: (i) $-x + 2, -y + 2, -z + 2$; (ii) $-x + 1, -y + 2, -z + 1$.

Data collection: *APEX2* (Bruker, 2007); cell refinement: *SAINT* (Bruker, 2007); data reduction: *SAINT*; program(s) used to solve structure: *SHELXS97* (Sheldrick, 2008); program(s) used to refine structure: *SHELXL97* (Sheldrick, 2008); molecular graphics: *X-SEED* (Barbour, 2001); software used to prepare material for publication: *pubCIF* (Westrip, 2009).

We thank the University of Malaya (PJP FS316/2008 C) for supporting this study; KWT thanks the Ministry of Higher Education for an SLAI scholarship.

Supplementary data and figures for this paper are available from the IUCr electronic archives (Reference: SJ2562).

References

- Barbour, L. J. (2001). *J. Supramol. Chem.* **1**, 189–191.
 Broomhead, J. A. & Dwyer, F. P. (1961). *Aust. J. Chem.* **14**, 250
 Bruker (2007). *APEX2* and *SAINT*. Bruker AXS Inc., Madison, Wisconsin, USA.
 Gingras, I. B. A., Hornal, R. W. & Bayley, C. H. (1960). *Can. J. Chem.* **38**, 712–719.
 Liu, H.-C., Chen, S.-T., Sun, P.-J., Chin, Y.-Y. & Yang, C.-H. (1974). *Huaxue*, pp. 38–48.
 Luo, Z.-F., Yan, Z.-H., Wu, Z.-S. & Guo, W.-G. (1988). *Huazhong Shifan Daxue Xuebao, Ziran Kexueban*, **22**, 56–60.
 Mayadeo, M. S., Sinha, C. H. & Kale, S. S. (1986). *J. Ind. Chem. Soc.* **63**, 694–696.

- Onuska, K. D., Lahitova, N. & Carsky, J. (1996). *Toxicol. Environ. Chem.* **57**, 163–170.
- Sheldrick, G. M. (1996). *SADABS*. University of Göttingen, Germany.
- Sheldrick, G. M. (2008). *Acta Cryst.* **A64**, 112–122.
- Shen, Y.-M. & Li, Z.-Q. (2006). *Hecheng Huaxue*, **14**, 126–130.
- Westrip, S. P. (2009). *publCIF*. In preparation.
- Zhu, X.-D., Luo, Z.-F., Wu, Z. S. & Yan, Z.-H. (1991a). *Zh. Neorg. Khim.* **36**, 1240–1243.
- Zhu, X.-D., Luo, Z.-F., Wu, Z. S., Yan, Z.-H. & Wang, C.-G. (1991b). *Gaodeng Xuexiao Huaxue Xuebao*, **12**, 1066–1068.

supporting information

Acta Cryst. (2009). E65, m61–m62 [doi:10.1107/S160053680804169X]

(4-Hydroxy-2-oxidobenzaldehyde thiosemicarbazonato- κ^3O^2,N^1,S)(1,10-phenanthroline- κ^2N,N')zinc(II) dimethyl sulfoxide disolvate monohydrate

Kong Wai Tan, Chew Hee Ng, Mohd Jamil Maah and Seik Weng Ng

S1. Experimental

Zinc acetate monohydrate (0.22 g, 1 mmol), 2,4-dihydroxybenzaldehyde thiosemicarbazone (0.21 g, 1 mmol) and 1,10-phenanthroline (0.20 g, 1 mmol) were heated in ethanol (50 ml) to give a yellow solution. The compound that separated on cooling the solution was recrystallized from DMSO.

S2. Refinement

Carbon-bound H-atoms were placed in calculated positions (C—H 0.95– to 0.98 Å) and were included in the refinement in the riding model approximation, with $U(H)$ set to 1.2–1.5 $U_{eq}(C)$. The amino and hydroxy H-atoms were similarly placed. The water H-atoms were placed in chemically sensible positions on the basis of hydrogen bonding but were not refined. Their temperature factors were similarly tied.

One of the two DMSO molecules is disordered in the sulfur atom only. The disorder refined to a 0.56 (1):0.44 ratio.

The middle six-membered ring of the phenanthroline unit was refined as a rigid hexagon of 1.39 Å sides. The N4 and C12 atoms of the unit were restrained to be nearly isotropic; a tight restraint was used.

The final difference Fourier map had a peak in the vicinity of N1 and a hole in the vicinity of Zn1.

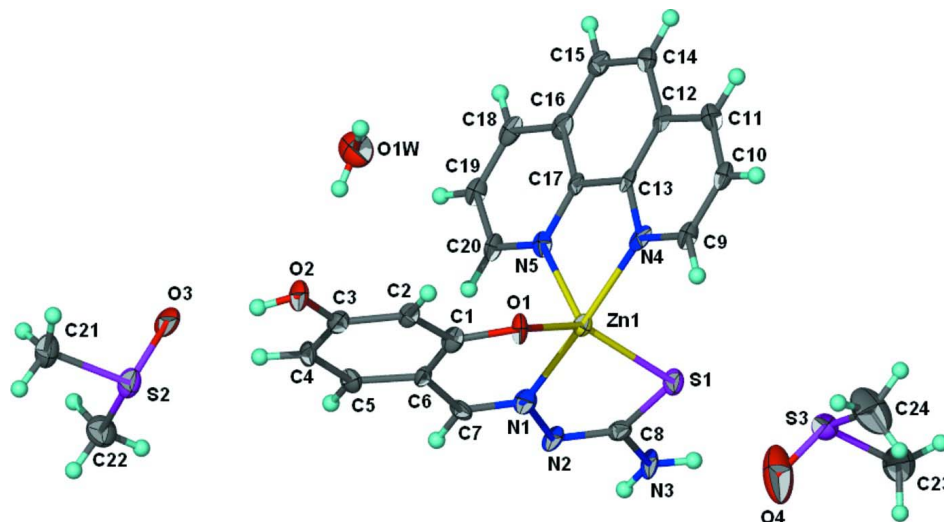


Figure 1

Thermal ellipsoid (Barbour, 2001) plot of $Zn(C_{12}H_8N_2)(C_8H_7N_3O_2S)2DMSO \cdot H_2O$ at the 70% probability level. Hydrogen atoms are drawn as spheres of arbitrary radii. The disorder in the DMSO is not shown.

(4-Hydroxy-2-oxidobenzaldehyde thiosemicarbazonato- κ^3O^2,N^1,S)(1,10-phenanthroline- κ^2N,N')zinc(II) dimethyl sulfoxide disolvate monohydrate

Crystal data

[Zn(C₈H₇N₃O₂S)(C₁₂H₈N₂)]·2C₂H₆OS·H₂O

$M_r = 629.07$

Triclinic, $P\bar{1}$

Hall symbol: -P 1

$a = 9.3582$ (5) Å

$b = 9.8181$ (5) Å

$c = 15.2913$ (8) Å

$\alpha = 73.641$ (3)°

$\beta = 82.482$ (4)°

$\gamma = 88.059$ (4)°

$V = 1336.5$ (1) Å³

$Z = 2$

$F(000) = 652$

$D_x = 1.563$ Mg m⁻³

Mo $K\alpha$ radiation, $\lambda = 0.71073$ Å

Cell parameters from 932 reflections

$\theta = 2.2$ – 21.9 °

$\mu = 1.20$ mm⁻¹

$T = 100$ K

Prism, yellow

$0.05 \times 0.01 \times 0.01$ mm

Data collection

Bruker SMART APEX
diffractometer

Radiation source: fine-focus sealed tube

Graphite monochromator

ω scans

Absorption correction: multi-scan

(*SADABS*; Sheldrick, 1996)

$T_{\min} = 0.943$, $T_{\max} = 0.988$

12760 measured reflections

6125 independent reflections

3397 reflections with $I > 2\sigma(I)$

$R_{\text{int}} = 0.097$

$\theta_{\max} = 27.5$ °, $\theta_{\min} = 1.4$ °

$h = -12 \rightarrow 12$

$k = -12 \rightarrow 12$

$l = -19 \rightarrow 19$

Refinement

Refinement on F^2

Least-squares matrix: full

$R[F^2 > 2\sigma(F^2)] = 0.074$

$wR(F^2) = 0.211$

$S = 0.98$

6125 reflections

344 parameters

27 restraints

Primary atom site location: structure-invariant

direct methods

Secondary atom site location: difference Fourier
map

Hydrogen site location: inferred from
neighbouring sites

H-atom parameters constrained

$w = 1/[\sigma^2(F_o^2) + (0.0989P)^2]$

where $P = (F_o^2 + 2F_c^2)/3$

$(\Delta/\sigma)_{\max} = 0.001$

$\Delta\rho_{\max} = 1.51$ e Å⁻³

$\Delta\rho_{\min} = -1.29$ e Å⁻³

Fractional atomic coordinates and isotropic or equivalent isotropic displacement parameters (Å²)

	<i>x</i>	<i>y</i>	<i>z</i>	$U_{\text{iso}}^*/U_{\text{eq}}$	Occ. (<1)
Zn1	0.78197 (8)	1.15841 (8)	0.72088 (5)	0.0148 (2)	
S1	0.86430 (18)	1.30637 (17)	0.80123 (11)	0.0196 (4)	
S2	0.30700 (19)	0.28436 (18)	0.79460 (12)	0.0228 (4)	
S3	1.2635 (3)	1.5316 (3)	0.9107 (2)	0.0249 (10)	0.564 (6)
S3'	1.1708 (4)	1.5622 (4)	0.9722 (3)	0.0235 (13)	0.436 (6)
O1	0.6115 (5)	1.0571 (4)	0.7064 (3)	0.0183 (10)	
O2	0.4103 (5)	0.6534 (5)	0.6604 (3)	0.0206 (10)	
H2	0.4048	0.5648	0.6818	0.031*	
O3	0.4176 (5)	0.3697 (5)	0.7213 (3)	0.0254 (11)	
O4	1.1918 (7)	1.4255 (6)	0.9740 (4)	0.067 (2)	
O1W	0.5152 (5)	0.8171 (5)	0.4620 (4)	0.0352 (13)	

H1W1	0.4596	0.8455	0.4217	0.053*
H1W2	0.4664	0.7745	0.5118	0.053*
N1	0.8024 (6)	1.0029 (6)	0.8431 (4)	0.0180 (12)
N2	0.8839 (6)	1.0295 (6)	0.9059 (4)	0.0173 (12)
N3	0.9991 (6)	1.1973 (6)	0.9465 (4)	0.0198 (12)
H31	1.0275	1.1297	0.9922	0.024*
H32	1.0243	1.2860	0.9385	0.024*
N4	0.7906 (6)	1.3147 (6)	0.5889 (4)	0.0169 (12)
N5	0.9576 (5)	1.0814 (5)	0.6433 (4)	0.0141 (11)
C1	0.6018 (7)	0.9163 (7)	0.7315 (4)	0.0166 (14)
C2	0.5111 (6)	0.8529 (6)	0.6879 (4)	0.0147 (13)
H2A	0.4559	0.9117	0.6439	0.018*
C3	0.4999 (7)	0.7065 (7)	0.7073 (4)	0.0177 (14)
C4	0.5791 (7)	0.6167 (7)	0.7718 (4)	0.0182 (14)
H4	0.5747	0.5165	0.7834	0.022*
C5	0.6633 (7)	0.6775 (7)	0.8177 (4)	0.0174 (14)
H5	0.7162	0.6171	0.8624	0.021*
C6	0.6750 (7)	0.8259 (6)	0.8015 (4)	0.0144 (13)
C7	0.7622 (6)	0.8737 (7)	0.8587 (4)	0.0152 (13)
H7	0.7915	0.8055	0.9108	0.018*
C8	0.9168 (7)	1.1651 (7)	0.8889 (4)	0.0163 (14)
C9	0.7054 (7)	1.4278 (6)	0.5623 (5)	0.0173 (14)
H9	0.6259	1.4427	0.6040	0.021*
C10	0.7303 (7)	1.5230 (7)	0.4761 (4)	0.0180 (14)
H10	0.6672	1.6012	0.4589	0.022*
C11	0.8459 (7)	1.5049 (7)	0.4152 (5)	0.0194 (14)
H11	0.8637	1.5712	0.3563	0.023*
C12	0.9394 (4)	1.3858 (3)	0.4409 (3)	0.0162 (13)
C14	1.0583 (4)	1.3616 (4)	0.3825 (2)	0.0191 (14)
H14	1.0802	1.4255	0.3230	0.023*
C15	1.1451 (4)	1.2440 (4)	0.4113 (2)	0.0189 (14)
H15	1.2264	1.2274	0.3714	0.023*
C16	1.1131 (4)	1.1505 (3)	0.4984 (3)	0.0180 (14)
C17	0.9942 (4)	1.1746 (4)	0.5568 (2)	0.0143 (13)
C13	0.9074 (4)	1.2923 (4)	0.5280 (2)	0.0147 (13)
C18	1.1962 (7)	1.0255 (7)	0.5292 (5)	0.0184 (14)
H18	1.2784	1.0062	0.4911	0.022*
C19	1.1562 (6)	0.9336 (7)	0.6142 (4)	0.0164 (14)
H19	1.2095	0.8493	0.6353	0.020*
C20	1.0360 (7)	0.9656 (6)	0.6694 (5)	0.0167 (14)
H20	1.0093	0.9013	0.7283	0.020*
C21	0.2630 (8)	0.1380 (7)	0.7548 (5)	0.0269 (16)
H21A	0.2223	0.1737	0.6967	0.040*
H21B	0.1922	0.0768	0.8007	0.040*
H21C	0.3503	0.0834	0.7452	0.040*
C22	0.4045 (8)	0.1879 (8)	0.8850 (5)	0.0302 (17)
H22A	0.4803	0.1322	0.8607	0.045*
H22B	0.3387	0.1240	0.9330	0.045*

H22C	0.4483	0.2545	0.9110	0.045*	
C23	1.3333 (8)	1.6563 (9)	0.9636 (6)	0.040 (2)	
H23A	1.2790	1.6460	1.0245	0.060*	0.564 (6)
H23B	1.3231	1.7535	0.9249	0.060*	0.564 (6)
H23C	1.4354	1.6364	0.9699	0.060*	0.564 (6)
H23D	1.4092	1.6188	0.9286	0.060*	0.436 (6)
H23E	1.3584	1.6458	1.0241	0.060*	0.436 (6)
H23F	1.3202	1.7551	0.9337	0.060*	0.436 (6)
C24	1.1292 (9)	1.6561 (9)	0.8566 (6)	0.053 (3)	
H24A	1.0568	1.6040	0.8379	0.080*	0.564 (6)
H24B	1.1768	1.7262	0.8025	0.080*	0.564 (6)
H24C	1.0823	1.7047	0.9005	0.080*	0.564 (6)
H24D	1.0779	1.5941	0.8330	0.080*	0.436 (6)
H24E	1.2174	1.6865	0.8169	0.080*	0.436 (6)
H24F	1.0709	1.7375	0.8595	0.080*	0.436 (6)

Atomic displacement parameters (Å²)

	U^{11}	U^{22}	U^{33}	U^{12}	U^{13}	U^{23}
Zn1	0.0175 (4)	0.0132 (4)	0.0153 (4)	-0.0021 (3)	-0.0029 (3)	-0.0061 (3)
S1	0.0279 (9)	0.0143 (8)	0.0187 (9)	-0.0024 (7)	-0.0078 (7)	-0.0056 (7)
S2	0.0245 (9)	0.0196 (9)	0.0275 (10)	-0.0028 (7)	-0.0038 (8)	-0.0111 (7)
S3	0.0274 (18)	0.0231 (18)	0.0235 (18)	-0.0044 (13)	0.0022 (14)	-0.0072 (14)
S3'	0.027 (2)	0.022 (2)	0.024 (2)	-0.0031 (16)	-0.0019 (17)	-0.0097 (17)
O1	0.019 (2)	0.009 (2)	0.028 (3)	-0.0014 (18)	-0.007 (2)	-0.0063 (19)
O2	0.023 (2)	0.015 (2)	0.027 (3)	-0.005 (2)	-0.006 (2)	-0.009 (2)
O3	0.030 (3)	0.025 (3)	0.027 (3)	-0.008 (2)	-0.004 (2)	-0.016 (2)
O4	0.110 (6)	0.026 (3)	0.072 (5)	-0.001 (4)	-0.061 (5)	-0.003 (3)
O1W	0.036 (3)	0.038 (3)	0.033 (3)	-0.009 (3)	-0.012 (2)	-0.008 (3)
N1	0.019 (3)	0.019 (3)	0.019 (3)	-0.003 (2)	-0.005 (2)	-0.008 (2)
N2	0.021 (3)	0.018 (3)	0.018 (3)	-0.002 (2)	-0.007 (2)	-0.012 (2)
N3	0.031 (3)	0.012 (3)	0.021 (3)	-0.002 (2)	-0.015 (3)	-0.007 (2)
N4	0.019 (2)	0.018 (2)	0.020 (3)	-0.004 (2)	-0.005 (2)	-0.013 (2)
N5	0.016 (3)	0.012 (3)	0.017 (3)	0.000 (2)	-0.009 (2)	-0.005 (2)
C1	0.015 (3)	0.018 (3)	0.020 (3)	-0.002 (3)	-0.006 (3)	-0.008 (3)
C2	0.011 (3)	0.016 (3)	0.019 (3)	-0.002 (2)	-0.002 (3)	-0.008 (3)
C3	0.018 (3)	0.017 (3)	0.019 (3)	-0.002 (3)	0.002 (3)	-0.009 (3)
C4	0.021 (3)	0.011 (3)	0.022 (4)	-0.007 (3)	0.005 (3)	-0.006 (3)
C5	0.017 (3)	0.015 (3)	0.019 (3)	-0.007 (3)	0.002 (3)	-0.004 (3)
C6	0.017 (3)	0.011 (3)	0.016 (3)	-0.002 (2)	0.003 (3)	-0.008 (3)
C7	0.016 (3)	0.015 (3)	0.012 (3)	-0.006 (3)	0.000 (3)	-0.001 (3)
C8	0.016 (3)	0.020 (3)	0.015 (3)	-0.005 (3)	0.001 (3)	-0.009 (3)
C9	0.018 (3)	0.015 (3)	0.023 (4)	0.004 (3)	-0.007 (3)	-0.009 (3)
C10	0.021 (3)	0.014 (3)	0.024 (4)	0.001 (3)	-0.007 (3)	-0.010 (3)
C11	0.022 (3)	0.013 (3)	0.021 (4)	-0.001 (3)	-0.004 (3)	-0.002 (3)
C12	0.019 (3)	0.015 (3)	0.019 (3)	-0.005 (2)	-0.007 (2)	-0.010 (2)
C14	0.024 (3)	0.015 (3)	0.020 (3)	-0.005 (3)	-0.002 (3)	-0.007 (3)
C15	0.016 (3)	0.020 (3)	0.025 (4)	-0.005 (3)	0.000 (3)	-0.014 (3)

C16	0.015 (3)	0.019 (3)	0.024 (4)	-0.006 (3)	-0.002 (3)	-0.012 (3)
C17	0.014 (3)	0.013 (3)	0.018 (3)	-0.007 (2)	-0.001 (3)	-0.009 (3)
C13	0.018 (3)	0.013 (3)	0.018 (3)	-0.003 (3)	-0.005 (3)	-0.011 (3)
C18	0.014 (3)	0.021 (3)	0.026 (4)	0.002 (3)	-0.008 (3)	-0.015 (3)
C19	0.013 (3)	0.016 (3)	0.023 (4)	0.003 (3)	-0.008 (3)	-0.009 (3)
C20	0.018 (3)	0.011 (3)	0.023 (3)	0.004 (3)	-0.005 (3)	-0.008 (3)
C21	0.029 (4)	0.020 (4)	0.035 (4)	-0.002 (3)	-0.004 (3)	-0.012 (3)
C22	0.038 (4)	0.026 (4)	0.026 (4)	-0.001 (3)	-0.009 (3)	-0.004 (3)
C23	0.043 (5)	0.037 (5)	0.042 (5)	-0.014 (4)	0.001 (4)	-0.014 (4)
C24	0.058 (6)	0.042 (5)	0.049 (6)	0.004 (5)	-0.026 (5)	0.012 (5)

Geometric parameters (Å, °)

Zn1—O1	1.976 (4)	C6—C7	1.448 (9)
Zn1—N1	2.081 (5)	C7—H7	0.9500
Zn1—N5	2.143 (5)	C9—C10	1.381 (9)
Zn1—N4	2.157 (5)	C9—H9	0.9500
Zn1—S1	2.3542 (18)	C10—C11	1.373 (9)
S1—C8	1.744 (7)	C10—H10	0.9500
S2—O3	1.502 (5)	C11—C12	1.432 (7)
S2—C22	1.782 (7)	C11—H11	0.9500
S2—C21	1.790 (7)	C12—C14	1.3900
S3—O4	1.335 (7)	C12—C13	1.3900
S3—C23	1.825 (8)	C14—C15	1.3900
S3—C24	1.832 (8)	C14—H14	0.9500
S3—H23D	1.7249	C15—C16	1.3900
S3'—O4	1.342 (7)	C15—H15	0.9500
S3'—C23	1.777 (8)	C16—C17	1.3900
S3'—C24	1.834 (9)	C16—C18	1.427 (7)
O1—C1	1.329 (7)	C17—C13	1.3900
O2—C3	1.373 (8)	C18—C19	1.371 (9)
O2—H2	0.8400	C18—H18	0.9500
O1W—H1W1	0.8400	C19—C20	1.397 (9)
O1W—H1W2	0.8400	C19—H19	0.9500
N1—C7	1.282 (8)	C20—H20	0.9500
N1—N2	1.385 (7)	C21—H21A	0.9800
N2—C8	1.321 (8)	C21—H21B	0.9800
N3—C8	1.349 (8)	C21—H21C	0.9800
N3—H31	0.8800	C22—H22A	0.9800
N3—H32	0.8800	C22—H22B	0.9800
N4—C9	1.344 (8)	C22—H22C	0.9800
N4—C13	1.394 (6)	C23—H23A	0.9800
N5—C20	1.325 (8)	C23—H23B	0.9800
N5—C17	1.388 (6)	C23—H23C	0.9800
C1—C2	1.405 (8)	C23—H23D	0.9601
C1—C6	1.421 (9)	C23—H23E	0.9600
C2—C3	1.389 (9)	C23—H23F	0.9600
C2—H2A	0.9500	C24—H24A	0.9800

C3—C4	1.398 (9)	C24—H24B	0.9800
C4—C5	1.373 (9)	C24—H24C	0.9800
C4—H4	0.9500	C24—H24D	0.9599
C5—C6	1.413 (8)	C24—H24E	0.9600
C5—H5	0.9500	C24—H24F	0.9601
O1—Zn1—N1	89.26 (19)	C14—C12—C13	120.0
O1—Zn1—N5	104.25 (19)	C14—C12—C11	122.6 (4)
N1—Zn1—N5	94.6 (2)	C13—C12—C11	117.4 (4)
O1—Zn1—N4	95.47 (18)	C12—C14—C15	120.0
N1—Zn1—N4	172.4 (2)	C12—C14—H14	120.0
N5—Zn1—N4	78.52 (19)	C15—C14—H14	120.0
O1—Zn1—S1	143.98 (15)	C14—C15—C16	120.0
N1—Zn1—S1	82.37 (15)	C14—C15—H15	120.0
N5—Zn1—S1	111.28 (14)	C16—C15—H15	120.0
N4—Zn1—S1	97.11 (14)	C17—C16—C15	120.0
C8—S1—Zn1	93.9 (2)	C17—C16—C18	118.2 (4)
O3—S2—C22	105.7 (3)	C15—C16—C18	121.7 (4)
O3—S2—C21	105.6 (3)	N5—C17—C13	118.7 (3)
C22—S2—C21	97.8 (4)	N5—C17—C16	121.3 (3)
O4—S3—C23	111.0 (4)	C13—C17—C16	120.0
O4—S3—C24	107.3 (4)	C17—C13—C12	120.0
C23—S3—C24	93.9 (4)	C17—C13—N4	118.5 (3)
O4—S3—H23D	124.6	C12—C13—N4	121.5 (3)
C24—S3—H23D	111.8	C19—C18—C16	119.4 (6)
O4—S3'—C23	113.4 (5)	C19—C18—H18	120.3
O4—S3'—C24	106.8 (4)	C16—C18—H18	120.3
C23—S3'—C24	95.5 (4)	C18—C19—C20	119.2 (6)
C1—O1—Zn1	122.6 (4)	C18—C19—H19	120.4
C3—O2—H2	109.5	C20—C19—H19	120.4
S3—O4—S3'	57.4 (3)	N5—C20—C19	122.9 (6)
H1W1—O1W—H1W2	108.8	N5—C20—H20	118.5
C7—N1—N2	115.8 (5)	C19—C20—H20	118.5
C7—N1—Zn1	123.3 (4)	S2—C21—H21A	109.5
N2—N1—Zn1	119.9 (4)	S2—C21—H21B	109.5
C8—N2—N1	113.3 (5)	H21A—C21—H21B	109.5
C8—N3—H31	120.0	S2—C21—H21C	109.5
C8—N3—H32	120.0	H21A—C21—H21C	109.5
H31—N3—H32	120.0	H21B—C21—H21C	109.5
C9—N4—C13	119.3 (5)	S2—C22—H22A	109.5
C9—N4—Zn1	128.9 (4)	S2—C22—H22B	109.5
C13—N4—Zn1	111.7 (3)	H22A—C22—H22B	109.5
C20—N5—C17	119.0 (5)	S2—C22—H22C	109.5
C20—N5—Zn1	128.8 (4)	H22A—C22—H22C	109.5
C17—N5—Zn1	112.1 (3)	H22B—C22—H22C	109.5
O1—C1—C2	118.1 (6)	S3—C23—H23A	109.5
O1—C1—C6	124.0 (6)	S3'—C23—H23B	108.6
C2—C1—C6	117.8 (6)	S3—C23—H23B	109.5

C3—C2—C1	121.6 (6)	H23A—C23—H23B	109.5
C3—C2—H2A	119.2	S3'—C23—H23C	139.0
C1—C2—H2A	119.2	S3—C23—H23C	109.5
O2—C3—C2	117.8 (6)	H23A—C23—H23C	109.5
O2—C3—C4	121.4 (6)	H23B—C23—H23C	109.5
C2—C3—C4	120.8 (6)	S3'—C23—H23D	109.5
C5—C4—C3	118.0 (6)	S3'—C23—H23E	109.4
C5—C4—H4	121.0	S3—C23—H23E	132.4
C3—C4—H4	121.0	H23D—C23—H23E	109.5
C4—C5—C6	123.0 (6)	S3'—C23—H23F	109.6
C4—C5—H5	118.5	S3—C23—H23F	115.8
C6—C5—H5	118.5	H23D—C23—H23F	109.5
C5—C6—C1	118.5 (6)	H23E—C23—H23F	109.5
C5—C6—C7	116.5 (6)	S3—C24—H24A	109.5
C1—C6—C7	125.0 (6)	S3'—C24—H24A	110.7
N1—C7—C6	123.8 (6)	S3—C24—H24B	109.5
N1—C7—H7	118.1	S3'—C24—H24B	136.8
C6—C7—H7	118.1	H24A—C24—H24B	109.5
N2—C8—N3	116.1 (6)	S3—C24—H24C	109.5
N2—C8—S1	127.2 (5)	H24A—C24—H24C	109.5
N3—C8—S1	116.7 (5)	H24B—C24—H24C	109.5
N4—C9—C10	121.8 (6)	S3—C24—H24D	99.6
N4—C9—H9	119.1	S3'—C24—H24D	109.8
C10—C9—H9	119.1	S3—C24—H24E	76.3
C11—C10—C9	120.1 (6)	S3'—C24—H24E	109.4
C11—C10—H10	119.9	H24D—C24—H24E	109.5
C9—C10—H10	119.9	S3—C24—H24F	145.6
C10—C11—C12	119.8 (6)	S3'—C24—H24F	109.3
C10—C11—H11	120.1	H24D—C24—H24F	109.5
C12—C11—H11	120.1	H24E—C24—H24F	109.5
O1—Zn1—S1—C8	91.0 (3)	C1—C6—C7—N1	-11.7 (10)
N1—Zn1—S1—C8	12.9 (3)	N1—N2—C8—N3	-178.5 (5)
N5—Zn1—S1—C8	-79.0 (3)	N1—N2—C8—S1	2.1 (8)
N4—Zn1—S1—C8	-159.5 (3)	Zn1—S1—C8—N2	-13.0 (6)
N1—Zn1—O1—C1	-36.1 (5)	Zn1—S1—C8—N3	167.7 (5)
N5—Zn1—O1—C1	58.4 (5)	C13—N4—C9—C10	-0.1 (9)
N4—Zn1—O1—C1	137.9 (5)	Zn1—N4—C9—C10	176.3 (4)
S1—Zn1—O1—C1	-112.0 (5)	N4—C9—C10—C11	-1.0 (10)
C23—S3—O4—S3'	47.1 (4)	C9—C10—C11—C12	0.9 (9)
C24—S3—O4—S3'	-54.3 (4)	C10—C11—C12—C14	-179.9 (5)
C23—S3'—O4—S3	-49.9 (4)	C10—C11—C12—C13	0.2 (7)
C24—S3'—O4—S3	54.0 (4)	C13—C12—C14—C15	0.0
O1—Zn1—N1—C7	29.5 (5)	C11—C12—C14—C15	-179.9 (5)
N5—Zn1—N1—C7	-74.8 (5)	C12—C14—C15—C16	0.0
S1—Zn1—N1—C7	174.3 (5)	C14—C15—C16—C17	0.0
O1—Zn1—N1—N2	-161.9 (5)	C14—C15—C16—C18	177.5 (5)
N5—Zn1—N1—N2	93.9 (5)	C20—N5—C17—C13	176.9 (4)

S1—Zn1—N1—N2	-17.0 (4)	Zn1—N5—C17—C13	-7.0 (4)
C7—N1—N2—C8	-177.1 (6)	C20—N5—C17—C16	-1.7 (6)
Zn1—N1—N2—C8	13.4 (7)	Zn1—N5—C17—C16	174.5 (2)
O1—Zn1—N4—C9	74.9 (5)	C15—C16—C17—N5	178.5 (4)
N5—Zn1—N4—C9	178.4 (5)	C18—C16—C17—N5	0.9 (5)
S1—Zn1—N4—C9	-71.3 (5)	C15—C16—C17—C13	0.0
O1—Zn1—N4—C13	-108.5 (4)	C18—C16—C17—C13	-177.6 (4)
N5—Zn1—N4—C13	-5.0 (3)	N5—C17—C13—C12	-178.5 (4)
S1—Zn1—N4—C13	105.3 (3)	C16—C17—C13—C12	0.0
O1—Zn1—N5—C20	-85.1 (5)	N5—C17—C13—N4	2.6 (5)
N1—Zn1—N5—C20	5.2 (5)	C16—C17—C13—N4	-178.8 (4)
N4—Zn1—N5—C20	-177.9 (6)	C14—C12—C13—C17	0.0
S1—Zn1—N5—C20	88.8 (5)	C11—C12—C13—C17	179.9 (4)
N1—Zn1—N5—C17	-170.5 (3)	C14—C12—C13—N4	178.8 (4)
N4—Zn1—N5—C17	6.3 (3)	C11—C12—C13—N4	-1.3 (5)
S1—Zn1—N5—C17	-86.9 (3)	C9—N4—C13—C17	-180.0 (4)
Zn1—O1—C1—C2	-154.9 (4)	Zn1—N4—C13—C17	3.1 (4)
Zn1—O1—C1—C6	26.7 (8)	C9—N4—C13—C12	1.2 (7)
O1—C1—C2—C3	177.1 (6)	Zn1—N4—C13—C12	-175.7 (2)
C6—C1—C2—C3	-4.4 (9)	C17—C16—C18—C19	0.4 (7)
C1—C2—C3—O2	-179.0 (6)	C15—C16—C18—C19	-177.2 (4)
C1—C2—C3—C4	0.2 (10)	C16—C18—C19—C20	-0.9 (9)
O2—C3—C4—C5	-178.2 (6)	C17—N5—C20—C19	1.1 (9)
C2—C3—C4—C5	2.6 (9)	Zn1—N5—C20—C19	-174.3 (5)
C3—C4—C5—C6	-1.1 (10)	C18—C19—C20—N5	0.2 (10)
C4—C5—C6—C1	-3.1 (9)	O4—S3'—C23—S3	45.0 (4)
C4—C5—C6—C7	176.9 (6)	C24—S3'—C23—S3	-66.0 (3)
O1—C1—C6—C5	-175.9 (6)	O4—S3—C23—S3'	-44.3 (4)
C2—C1—C6—C5	5.7 (9)	C24—S3—C23—S3'	65.9 (3)
O1—C1—C6—C7	4.1 (10)	O4—S3—C24—S3'	49.6 (4)
C2—C1—C6—C7	-174.4 (6)	C23—S3—C24—S3'	-63.8 (3)
N2—N1—C7—C6	179.2 (5)	O4—S3'—C24—S3	-49.1 (4)
Zn1—N1—C7—C6	-11.8 (9)	C23—S3'—C24—S3	67.4 (3)
C5—C6—C7—N1	168.3 (6)		

Hydrogen-bond geometry (Å, °)

<i>D</i> —H... <i>A</i>	<i>D</i> —H	H... <i>A</i>	<i>D</i> ... <i>A</i>	<i>D</i> —H... <i>A</i>
O2—H2...O3	0.84	1.84	2.679 (6)	172
N3—H31...N2 ⁱ	0.88	2.11	2.984 (8)	174
N3—H32...O4	0.88	2.33	3.074 (8)	143
O1w—H1w1...O1 ⁱⁱ	0.84	2.11	2.911 (7)	160
O1w—H1w2...O2	0.84	2.25	3.055 (7)	161

Symmetry codes: (i) $-x+2, -y+2, -z+2$; (ii) $-x+1, -y+2, -z+1$.