

Acta Crystallographica Section E

Structure Reports

Online

ISSN 1600-5368

4-Methyl-2,3-dihydro-1*H*-1,5-benzodiazepin-2-one monohydrateAsmaa Saber,^a Hafid Zouihri,^b El Mokhtar Essassi^a and Seik Weng Ng^{c*}

^aLaboratoire de Chimie Organique Hétérocyclique, Pôle de Compétences Pharmacochimie, Université Mohammed V-Agdal, BP 1014 Avenue Ibn Batout, Rabat, Morocco, ^bCNRST Division UATRS, Angle Allal Fassi/FAR, BP 8027 Hay Riad, Rabat, Morocco, and ^cDepartment of Chemistry, University of Malaya, 50603 Kuala Lumpur, Malaysia

Correspondence e-mail: seikweng@um.edu.my

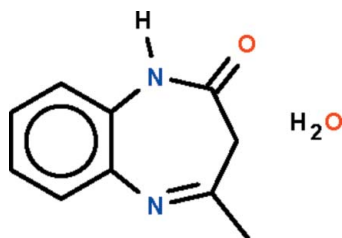
Received 27 April 2010; accepted 14 May 2010

Key indicators: single-crystal X-ray study; $T = 100$ K; mean $\sigma(\text{C}-\text{C}) = 0.001$ Å; R factor = 0.038; wR factor = 0.115; data-to-parameter ratio = 19.3.

The seven-membered fused-ring in the title compound, $\text{C}_{10}\text{H}_{10}\text{N}_2\text{O}\cdot\text{H}_2\text{O}$, adopts a boat conformation (with the two phenylene C atoms representing the stern and the methylene C atom the prow). In the crystal, two benzodiazepinone molecules are linked about a center of inversion by diazepine–carbonyl $\text{N}-\text{H}\cdots\text{O}$ hydrogen bonds. The dimers are further linked by water–diazepine $\text{O}-\text{H}\cdots\text{N}$ hydrogen bonds, forming a linear chain.

Related literature

For background to the synthesis and biological activity of benzodiazepines, see: Ahabchane *et al.* (1999). For the microwave-assisted synthesis, see: Koizumi (2006). For a related structure, see: Saber *et al.* (2010).



Experimental

Crystal data

 $\text{C}_{10}\text{H}_{10}\text{N}_2\text{O}\cdot\text{H}_2\text{O}$ $M_r = 192.22$

Triclinic, $P\bar{1}$
 $a = 4.9013$ (1) Å
 $b = 7.3148$ (1) Å
 $c = 13.5688$ (2) Å
 $\alpha = 85.375$ (1)°
 $\beta = 83.959$ (1)°
 $\gamma = 83.807$ (1)°

$V = 479.76$ (1) Å³
 $Z = 2$
 Mo $K\alpha$ radiation
 $\mu = 0.10$ mm⁻¹
 $T = 100$ K
 $0.43 \times 0.27 \times 0.25$ mm

Data collection

Bruker X8 APEXII diffractometer
 14168 measured reflections
 2778 independent reflections

2417 reflections with $I > 2\sigma(I)$
 $R_{\text{int}} = 0.025$

Refinement

$R[F^2 > 2\sigma(F^2)] = 0.038$
 $wR(F^2) = 0.115$
 $S = 1.01$
 2778 reflections
 144 parameters
 6 restraints

H atoms treated by a mixture of independent and constrained refinement
 $\Delta\rho_{\text{max}} = 0.33$ e Å⁻³
 $\Delta\rho_{\text{min}} = -0.23$ e Å⁻³

Table 1

Hydrogen-bond geometry (Å, °).

$D-\text{H}\cdots A$	$D-\text{H}$	$\text{H}\cdots A$	$D\cdots A$	$D-\text{H}\cdots A$
$\text{N2}-\text{H2}\cdots\text{O1}^i$	0.87 (1)	2.05 (1)	2.909 (1)	171 (1)
$\text{O1w}-\text{H11}\cdots\text{N1}$	0.83 (1)	2.12 (1)	2.945 (1)	170 (2)
$\text{O1w}-\text{H13}\cdots\text{O1w}^{ii}$	0.84 (1)	1.98 (1)	2.803 (2)	167 (5)

Symmetry codes: (i) $-x + 1, -y + 1, -z + 1$; (ii) $-x + 2, -y + 2, -z$.

Data collection: APEX2 (Bruker, 2008); cell refinement: SAINT (Bruker, 2008); data reduction: SAINT; program(s) used to solve structure: SHELXS97 (Sheldrick, 2008); program(s) used to refine structure: SHELXL97 (Sheldrick, 2008); molecular graphics: X-SEED (Barbour, 2001); software used to prepare material for publication: publCIF (Westrip, 2010).

We thank Université Mohammed V-Agdal and the University of Malaya for supporting this study.

Supplementary data and figures for this paper are available from the IUCr electronic archives (Reference: NC2183).

References

- Ahabchane, A. H., Keita, A. & Essassi, E. M. (1999). *Comp. Rend. Ser. IIC*, **2**, 519–523.
 Barbour, L. J. (2001). *J. Supramol. Chem.* **1**, 189–191.
 Bruker (2008). APEX2 and SAINT. Bruker AXS Inc., Madison, Wisconsin, USA.
 Koizumi, H. (2006). *Chem. Lett.* **35**, 1350–1351.
 Saber, A., Zouihri, H., Essassi, E. M. & Ng, S. W. (2010). *Acta Cryst.* **E66**, o1409.
 Sheldrick, G. M. (2008). *Acta Cryst.* **A64**, 112–122.
 Westrip, S. P. (2010). *J. Appl. Cryst.* **43**. Submitted.

supporting information

Acta Cryst. (2010). E66, o1408 [https://doi.org/10.1107/S1600536810017885]

4-Methyl-2,3-dihydro-1*H*-1,5-benzodiazepin-2-one monohydrate

Asmaa Saber, Hafid Zouihri, El Mokhtar Essassi and Seik Weng Ng

S1. Comment

The compound belongs to the class of benzodiazepine drugs; the compound is synthesized by condensing *o*-phenylenediamine with ethyl acetoacetate, two readily-available commercially chemicals. The chemical background of this class of precursor compounds is presented in an earlier report (Ahabchane *et al.*, 1999). A more recent study reports the microwave-assisted synthesis of the title compound (Koizumi, 2006), which is presumably anhydrous. However, the compound crystallizes as a monohydrate (Scheme I, Fig. 1), as shown from the crystal structure analysis.

One of the two hydrogen atoms of the water molecule is disordered over two positions in a 1:1 ratio. That hydrogen atom near the center-of-inversion is hydrogen bonded to the inversion-related oxygen atom. As the benzodiazepinone molecule is N–H \cdots O hydrogen bonded into a dimer, the water molecule then links adjacent dimers into a linear chain (Table 1).

S2. Experimental

o-Phenylenediamine (1.0 g, 9 mmol) and ethyl acetoacetate (1.2 ml, 9 mmol) were heated in xylene (10 ml) for 1 hour. The mixture was set aside for the growth of colorless crystals of 4-methyl-2,3-dihydro-1*H*-1,5-benzodiazepin-2-one; yield 90%. When the heating time is lengthened to 6 hours, the product is *N*-isopropenyl 1,3-benzimidazol-2-one; details are given in another report (Saber *et al.*, 2010).

S3. Refinement

Carbon-bound H-atoms were placed in calculated positions (C–H 0.95–0.98 Å) and were included in the refinement in the riding model approximation, with $U(\text{H})$ set to 1.2–1.5 $U_{\text{eq}}(\text{C})$.

One of the two hydrogen atoms of the water molecule is disordered over two positions. The hydrogen atom near the center-of-inversion should have only half occupancy; this is linked to the inversion-related water molecule. The O–H distances were restrained to 0.84±0.01 Å and the H \cdots H distances to 1.37±0.01 Å; the isotropic temperature factors of the hydrogen atoms were freely refined.

The amino H-atom was located in a difference Fourier map, and was refined with a distance restraint of N–H 0.86±0.01 Å; its temperature factor was also freely refined.

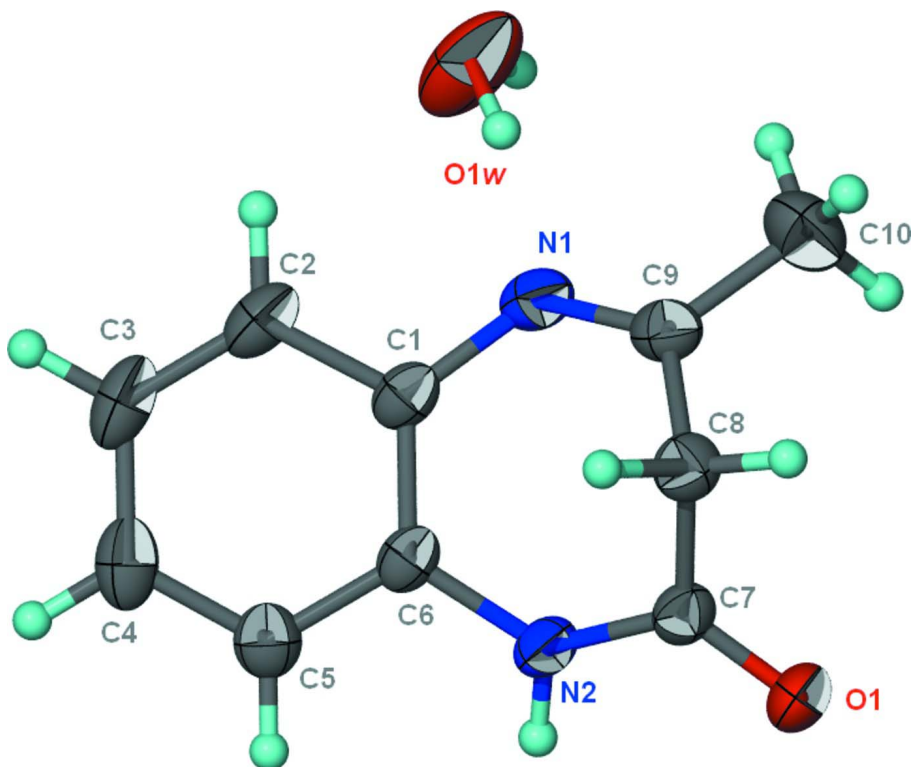


Figure 1

Thermal ellipsoid plot (Barbour, 2001) of the molecule of $C_{10}H_{10}N_2O \cdot H_2O$ at the 70% probability level; hydrogen atoms are drawn as spheres of arbitrary radius. The disorder in one of the two the hydrogen atoms of the water molecule is not shown.

4-Methyl-2,3-dihydro-1*H*-1,5-benzodiazepin-2-one monohydrate

Crystal data

$C_{10}H_{10}N_2O \cdot H_2O$

$M_r = 192.22$

Triclinic, $P\bar{1}$

Hall symbol: $-P\ 1$

$a = 4.9013$ (1) Å

$b = 7.3148$ (1) Å

$c = 13.5688$ (2) Å

$\alpha = 85.375$ (1)°

$\beta = 83.959$ (1)°

$\gamma = 83.807$ (1)°

$V = 479.76$ (1) Å³

$Z = 2$

$F(000) = 204$

$D_x = 1.331$ Mg m⁻³

Mo $K\alpha$ radiation, $\lambda = 0.71073$ Å

Cell parameters from 7100 reflections

$\theta = 2.8\text{--}37.4^\circ$

$\mu = 0.10$ mm⁻¹

$T = 100$ K

Block, colorless

$0.43 \times 0.27 \times 0.25$ mm

Data collection

Bruker X8 APEXII

diffractometer

Radiation source: fine-focus sealed tube

Graphite monochromator

φ and ω scans

14168 measured reflections

2778 independent reflections

2417 reflections with $I > 2\sigma(I)$

$R_{int} = 0.025$

$\theta_{max} = 30.0^\circ$, $\theta_{min} = 2.8^\circ$

$h = -6 \rightarrow 6$

$k = -10 \rightarrow 10$

$l = -19 \rightarrow 19$

Refinement

Refinement on F^2

Least-squares matrix: full

$R[F^2 > 2\sigma(F^2)] = 0.038$

$wR(F^2) = 0.115$

$S = 1.01$

2778 reflections

144 parameters

6 restraints

Primary atom site location: structure-invariant
direct methods

Secondary atom site location: difference Fourier
map

Hydrogen site location: inferred from
neighbouring sites

H atoms treated by a mixture of independent
and constrained refinement

$w = 1/[\sigma^2(F_o^2) + (0.0699P)^2 + 0.0787P]$

where $P = (F_o^2 + 2F_c^2)/3$

$(\Delta/\sigma)_{\max} = 0.001$

$\Delta\rho_{\max} = 0.33 \text{ e } \text{\AA}^{-3}$

$\Delta\rho_{\min} = -0.23 \text{ e } \text{\AA}^{-3}$

Fractional atomic coordinates and isotropic or equivalent isotropic displacement parameters (\AA^2)

	x	y	z	$U_{\text{iso}}^*/U_{\text{eq}}$	Occ. (<1)
O1	0.50754 (15)	0.32480 (10)	0.41041 (5)	0.03282 (18)	
O1W	0.7622 (2)	0.90681 (16)	0.01525 (8)	0.0615 (3)	
H11	0.781 (4)	0.8214 (18)	0.0590 (11)	0.067 (5)*	
H12	0.597 (3)	0.941 (5)	0.009 (3)	0.082 (13)*	0.50
H13	0.891 (6)	0.975 (4)	0.012 (3)	0.094 (15)*	0.50
N1	0.89510 (16)	0.62527 (11)	0.17532 (6)	0.02795 (18)	
N2	0.74476 (15)	0.57576 (10)	0.39494 (5)	0.02466 (17)	
H2	0.654 (3)	0.6122 (18)	0.4498 (8)	0.037 (3)*	
C1	1.02194 (17)	0.70536 (12)	0.24757 (7)	0.02450 (18)	
C2	1.21868 (19)	0.82648 (13)	0.21134 (8)	0.0313 (2)	
H2A	1.2708	0.8399	0.1419	0.038*	
C3	1.3380 (2)	0.92630 (13)	0.27404 (9)	0.0348 (2)	
H3	1.4753	1.0043	0.2481	0.042*	
C4	1.2567 (2)	0.91253 (13)	0.37537 (9)	0.0335 (2)	
H4	1.3346	0.9837	0.4187	0.040*	
C5	1.06207 (19)	0.79500 (13)	0.41311 (7)	0.02855 (19)	
H5	1.0057	0.7871	0.4824	0.034*	
C6	0.94708 (16)	0.68755 (11)	0.35054 (6)	0.02275 (18)	
C7	0.69461 (17)	0.41042 (12)	0.36746 (6)	0.02391 (18)	
C8	0.88337 (18)	0.33830 (12)	0.28103 (7)	0.02627 (19)	
H81	0.8500	0.2101	0.2715	0.032*	
H82	1.0783	0.3389	0.2940	0.032*	
C9	0.82545 (18)	0.46102 (13)	0.18931 (7)	0.02720 (19)	
C10	0.6764 (3)	0.38563 (18)	0.11355 (9)	0.0449 (3)	
H10A	0.7754	0.2688	0.0934	0.067*	
H10B	0.6667	0.4740	0.0555	0.067*	
H10C	0.4893	0.3646	0.1421	0.067*	

Atomic displacement parameters (\AA^2)

	U^{11}	U^{22}	U^{33}	U^{12}	U^{13}	U^{23}
O1	0.0366 (4)	0.0335 (4)	0.0295 (3)	-0.0160 (3)	0.0020 (3)	0.0010 (3)
O1W	0.0490 (6)	0.0668 (7)	0.0649 (6)	-0.0157 (5)	-0.0123 (5)	0.0400 (5)

N1	0.0277 (4)	0.0321 (4)	0.0230 (3)	-0.0036 (3)	-0.0011 (3)	0.0039 (3)
N2	0.0266 (3)	0.0232 (4)	0.0234 (3)	-0.0059 (3)	0.0027 (3)	0.0005 (3)
C1	0.0223 (4)	0.0226 (4)	0.0272 (4)	-0.0013 (3)	-0.0015 (3)	0.0047 (3)
C2	0.0265 (4)	0.0291 (5)	0.0356 (5)	-0.0040 (3)	0.0025 (3)	0.0091 (4)
C3	0.0253 (4)	0.0243 (4)	0.0534 (6)	-0.0063 (3)	-0.0016 (4)	0.0073 (4)
C4	0.0288 (4)	0.0231 (4)	0.0500 (6)	-0.0040 (3)	-0.0088 (4)	-0.0025 (4)
C5	0.0289 (4)	0.0244 (4)	0.0325 (4)	-0.0022 (3)	-0.0044 (3)	-0.0018 (3)
C6	0.0209 (3)	0.0192 (4)	0.0270 (4)	-0.0013 (3)	-0.0011 (3)	0.0030 (3)
C7	0.0256 (4)	0.0233 (4)	0.0227 (4)	-0.0047 (3)	-0.0037 (3)	0.0036 (3)
C8	0.0279 (4)	0.0222 (4)	0.0281 (4)	-0.0015 (3)	-0.0020 (3)	-0.0005 (3)
C9	0.0264 (4)	0.0314 (4)	0.0232 (4)	-0.0023 (3)	-0.0004 (3)	-0.0013 (3)
C10	0.0537 (7)	0.0509 (7)	0.0340 (5)	-0.0132 (5)	-0.0124 (5)	-0.0054 (5)

Geometric parameters (Å, °)

O1—C7	1.2349 (10)	C3—H3	0.9500
O1W—H11	0.83 (1)	C4—C5	1.3836 (13)
O1W—H12	0.83 (1)	C4—H4	0.9500
O1W—H13	0.84 (1)	C5—C6	1.4000 (12)
N1—C9	1.2783 (12)	C5—H5	0.9500
N1—C1	1.4108 (12)	C7—C8	1.5086 (12)
N2—C7	1.3484 (11)	C8—C9	1.5081 (12)
N2—C6	1.4088 (10)	C8—H81	0.9900
N2—H2	0.871 (8)	C8—H82	0.9900
C1—C2	1.4038 (12)	C9—C10	1.4937 (14)
C1—C6	1.4061 (12)	C10—H10A	0.9800
C2—C3	1.3769 (15)	C10—H10B	0.9800
C2—H2A	0.9500	C10—H10C	0.9800
C3—C4	1.3894 (16)		
H11—O1W—H12	112.1 (16)	C5—C6—C1	119.44 (8)
H11—O1W—H13	110.7 (16)	C5—C6—N2	116.97 (8)
H12—O1W—H13	126 (3)	C1—C6—N2	123.42 (8)
C9—N1—C1	121.45 (8)	O1—C7—N2	122.09 (8)
C7—N2—C6	127.19 (7)	O1—C7—C8	122.73 (8)
C7—N2—H2	116.4 (9)	N2—C7—C8	115.18 (7)
C6—N2—H2	116.0 (9)	C7—C8—C9	108.21 (7)
C2—C1—C6	118.40 (9)	C7—C8—H81	110.1
C2—C1—N1	116.10 (8)	C9—C8—H81	110.1
C6—C1—N1	125.17 (8)	C7—C8—H82	110.1
C3—C2—C1	121.59 (9)	C9—C8—H82	110.1
C3—C2—H2A	119.2	H81—C8—H82	108.4
C1—C2—H2A	119.2	N1—C9—C10	119.67 (9)
C2—C3—C4	119.72 (9)	N1—C9—C8	122.68 (8)
C2—C3—H3	120.1	C10—C9—C8	117.64 (8)
C4—C3—H3	120.1	C9—C10—H10A	109.5
C5—C4—C3	119.93 (9)	C9—C10—H10B	109.5
C5—C4—H4	120.0	H10A—C10—H10B	109.5

C3—C4—H4	120.0	C9—C10—H10C	109.5
C4—C5—C6	120.84 (9)	H10A—C10—H10C	109.5
C4—C5—H5	119.6	H10B—C10—H10C	109.5
C6—C5—H5	119.6		
C9—N1—C1—C2	145.61 (9)	N1—C1—C6—N2	4.35 (13)
C9—N1—C1—C6	-41.08 (13)	C7—N2—C6—C5	-147.70 (9)
C6—C1—C2—C3	0.11 (13)	C7—N2—C6—C1	36.97 (13)
N1—C1—C2—C3	173.89 (8)	C6—N2—C7—O1	-178.52 (8)
C1—C2—C3—C4	-2.16 (15)	C6—N2—C7—C8	1.60 (13)
C2—C3—C4—C5	1.76 (14)	O1—C7—C8—C9	112.70 (9)
C3—C4—C5—C6	0.68 (14)	N2—C7—C8—C9	-67.42 (10)
C4—C5—C6—C1	-2.73 (13)	C1—N1—C9—C10	176.32 (9)
C4—C5—C6—N2	-178.25 (8)	C1—N1—C9—C8	-2.65 (13)
C2—C1—C6—C5	2.31 (12)	C7—C8—C9—N1	71.61 (11)
N1—C1—C6—C5	-170.86 (8)	C7—C8—C9—C10	-107.38 (10)
C2—C1—C6—N2	177.52 (7)		

Hydrogen-bond geometry (Å, °)

<i>D</i> —H... <i>A</i>	<i>D</i> —H	H... <i>A</i>	<i>D</i> ... <i>A</i>	<i>D</i> —H... <i>A</i>
N2—H2...O1 ⁱ	0.87 (1)	2.05 (1)	2.909 (1)	171 (1)
O1w—H11...N1	0.83 (1)	2.12 (1)	2.945 (1)	170 (2)
O1w—H13...O1w ⁱⁱ	0.84 (1)	1.98 (1)	2.803 (2)	167 (5)

Symmetry codes: (i) $-x+1, -y+1, -z+1$; (ii) $-x+2, -y+2, -z$.