

Acta Crystallographica Section E

Structure Reports

Online

ISSN 1600-5368

1-(3,4-Dihydroxyphenyl)hexan-1-one

Xiao-Chun Peng, Wei-Jun Huang, Xi Wang, Dao-Hong Wu and Zhu-Ping Xiao*

College of Chemistry & Chemical Engineering, Jishou University, Jishou 416000, People's Republic of China

Correspondence e-mail: xiaozhuping2005@163.com

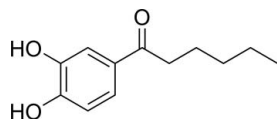
Received 30 May 2010; accepted 12 June 2010

 Key indicators: single-crystal X-ray study; $T = 296$ K; mean $\sigma(\text{C}-\text{C}) = 0.004$ Å; R factor = 0.065; wR factor = 0.218; data-to-parameter ratio = 16.7.

In the title compound, $\text{C}_{12}\text{H}_{16}\text{O}_3$, a fully extended hexyl carbon chain is attached to a benzene ring; the mean planes formed by the atoms in the benzene ring and the hexanone are inclined at an angle $8.5(2)^\circ$ with respect to each other. In the crystal, intermolecular $\text{O}-\text{H}\cdots\text{O}$ hydrogen bonds join the molecules into an infinite sheet.

Related literature

For the biological activity of alkylcatechols, see: Buu-hoï & Seailles (1955); Buu-hoï & Xuong (1961); Miller *et al.* (1938); Xiao, Fang *et al.* (2007); Xiao, Xue *et al.* (2007). For related structures, see: Cheng *et al.* (2009); Wang *et al.* (2009).



Experimental

Crystal data

$\text{C}_{12}\text{H}_{16}\text{O}_3$	$\gamma = 88.323(17)^\circ$
$M_r = 208.25$	$V = 570.6(3) \text{ \AA}^3$
Triclinic, $P\bar{1}$	$Z = 2$
$a = 7.170(2) \text{ \AA}$	Mo $K\alpha$ radiation
$b = 8.070(3) \text{ \AA}$	$\mu = 0.09 \text{ mm}^{-1}$
$c = 10.634(4) \text{ \AA}$	$T = 296 \text{ K}$
$\alpha = 75.638(17)^\circ$	$0.30 \times 0.24 \times 0.20 \text{ mm}$
$\beta = 73.373(19)^\circ$	

Data collection

Bruker SMART APEX CCD diffractometer	3311 measured reflections
Absorption correction: multi-scan (SADABS; Sheldrick, 1996)	2321 independent reflections
$T_{\min} = 0.975$, $T_{\max} = 0.983$	1219 reflections with $I > 2\sigma(I)$
	$R_{\text{int}} = 0.016$

Refinement

$R[F^2 > 2\sigma(F^2)] = 0.065$	139 parameters
$wR(F^2) = 0.218$	H-atom parameters constrained
$S = 1.00$	$\Delta\rho_{\text{max}} = 0.27 \text{ e \AA}^{-3}$
2321 reflections	$\Delta\rho_{\text{min}} = -0.30 \text{ e \AA}^{-3}$

Table 1

Hydrogen-bond geometry (Å, °).

$D-\text{H}\cdots A$	$D-\text{H}$	$\text{H}\cdots A$	$D\cdots A$	$D-\text{H}\cdots A$
$\text{O2}-\text{H2}\cdots\text{O1}$	0.82	2.29	2.718 (2)	113
$\text{O2}-\text{H2}\cdots\text{O1}^i$	0.82	2.11	2.828 (3)	147
$\text{O1}-\text{H1A}\cdots\text{O3}^{ii}$	0.82	1.93	2.749 (2)	176

 Symmetry codes: (i) $-x, -y, -z$; (ii) $x, y - 1, z$.

Data collection: SMART (Bruker, 2007); cell refinement: SAINT (Bruker, 2007); data reduction: SAINT; program(s) used to solve structure: SHELXS97 (Sheldrick, 2008); program(s) used to refine structure: SHELXL97 (Sheldrick, 2008); molecular graphics: SHELXTL (Sheldrick, 2008); software used to prepare material for publication: SHELXL97.

The work was financed by grants (Project 06 J J2067) from the Natural Science Foundation of Hunan Province, China, and by the Scientific Research Fund of Hunan Provincial Education Department (Project 09B083) of China.

Supplementary data and figures for this paper are available from the IUCr electronic archives (Reference: PV2291).

References

- Bruker (2007). SMART and SAINT. Bruker AXS Inc., Madison, Wisconsin, USA.
- Buu-hoï, N. P. & Seailles, J. (1955). *J. Org. Chem.* **20**, 606–609.
- Buu-hoï, N. P. & Xuong, N. D. (1961). *J. Org. Chem.* **26**, 2401–2402.
- Cheng, W., Lv, R. & Zhu, H.-J. (2009). *Acta Cryst.* **E65**, o179.
- Miller, E., Hartung, W. H., Rock, H. J. & Crossley, F. S. (1938). *J. Am. Chem. Soc.* **60**, 7–10.
- Sheldrick, G. M. (1996). SADABS. University of Göttingen, Germany.
- Sheldrick, G. M. (2008). *Acta Cryst.* **A64**, 112–122.
- Wang, X.-M., Cheng, W. & Han, Y.-W. (2009). *Acta Cryst.* **E65**, o176.
- Xiao, Z.-P., Fang, R.-Q., Shi, L., Ding, H., Xu, C. & Zhu, H.-L. (2007). *Can. J. Chem.* **85**, 951–957.
- Xiao, Z.-P., Xue, J.-Y., Tan, S.-H., Li, H.-Q. & Zhu, H.-L. (2007). *Bioorg. Med. Chem.* **15**, 4212–4219.

supporting information

Acta Cryst. (2010). E66, o1725 [doi:10.1107/S1600536810022555]

1-(3,4-Dihydroxyphenyl)hexan-1-one

Xiao-Chun Peng, Wei-Jun Huang, Xi Wang, Dao-Hong Wu and Zhu-Ping Xiao

S1. Comment

Acylcatechols are intermediates in the synthesis of alkylcatechols which show significant bactericidal activity (Miller *et al.*, 1938; Xiao, Xue *et al.*, 2007; Xiao, Fang *et al.*, 2007) and possess considerable protective properties against lethal radiations (Buu-hoï & Seailles, 1955; Buu-hoï & Xuong, 1961). Consequently, we have synthesized a series of acylcatechols for bioactivity screening. In this paper, the crystal structure of the title compound has been presented. The crystal structures of compounds related to the title molecule have been reported (Cheng *et al.*, 2009; Wang *et al.*, 2009).

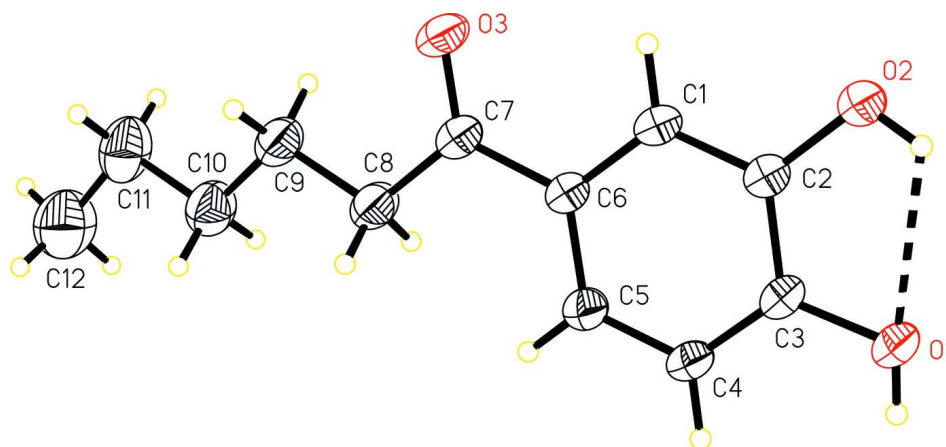
The bond lengths and angles in the title compound (Fig. 1) are unexceptional (Cheng *et al.*, 2009; Wang *et al.*, 2009). The hexyl carbon chain (C7—C12) attached to the phenyl ring is fully extended; the mean-planes formed by the atoms in the phenyl ring and hexanone are inclined at an angle $8.5(2)^\circ$ with respect to each other. The two hydroxyl groups of catechol moiety are involved in an intramolecular hydrogen bond, O2—H2 \cdots O1 (Fig. 1). There are two O—H \cdots O type intermolecular hydrogen bonds which stabilize the crystal structure and result in an infinite sheet (Fig. 2 and Tab. 1).

S2. Experimental

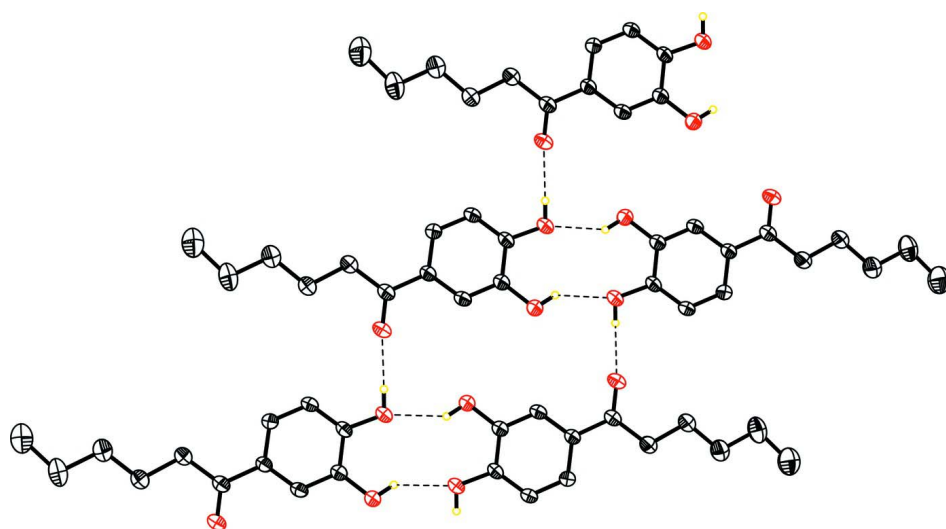
1-(3,4-Dihydroxyphenyl)hexan-1-one was prepared by treating hexanoic acid (1.27 g, 11 mmol) with catechol (1.11 g, 10 mmol) at 348 K for 4 h in boron trifluoride diethyl etherate (20 mL). After cooling, the contents were poured into 150 ml of ice-cold aqueous sodium acetate (10%) with stirring. Then, the mixture was extracted with EtOAc and dried over MgSO₄. After removal of solvent, the crude product was crystallized from EtOAc-petroleum (2:3) to give colorless blocks of the title compound suitable for single-crystal structure determination.

S3. Refinement

All H atoms were placed in geometrically idealized positions and constrained to ride on their parent atoms with O—H = 0.82 Å and C—H = 0.93, 0.96 and 0.97 Å for the aromatic, CH₃ and CH₂ types H atoms, respectively. $U_{\text{iso}} = 1.2U_{\text{eq}}$ (parent atoms) were assigned for aromatic and CH₂ type H-atoms and $1.5U_{\text{eq}}$ (parent atoms) for OH and CH₃ type H-atoms.

**Figure 1**

Molecular structure of the title compound, showing the atomic-numbering scheme. Displacement ellipsoids are drawn at the 30% probability level.

**Figure 2**

A two-dimensional sheet formed through intermolecular O—H...O hydrogen bonds.

1-(3,4-Dihydroxyphenyl)hexan-1-one

Crystal data

$C_{12}H_{16}O_3$

$M_r = 208.25$

Triclinic, $P\bar{1}$

Hall symbol: $-P\ 1$

$a = 7.170\ (2)\ \text{\AA}$

$b = 8.070\ (3)\ \text{\AA}$

$c = 10.634\ (4)\ \text{\AA}$

$\alpha = 75.638\ (17)^\circ$

$\beta = 73.373\ (19)^\circ$

$\gamma = 88.323\ (17)^\circ$

$V = 570.6\ (3)\ \text{\AA}^3$

$Z = 2$

$F(000) = 224$

$D_x = 1.212\ \text{Mg m}^{-3}$

Mo $K\alpha$ radiation, $\lambda = 0.71073\ \text{\AA}$

Cell parameters from 1104 reflections

$\theta = 2.8\text{--}25.9^\circ$

$\mu = 0.09\ \text{mm}^{-1}$

$T = 296\ \text{K}$

Block, colorless

$0.30 \times 0.24 \times 0.20\ \text{mm}$

Data collection

Bruker SMART APEX CCD diffractometer	3311 measured reflections
Radiation source: fine-focus sealed tube	2321 independent reflections
Graphite monochromator	1219 reflections with $I > 2\sigma(I)$
φ and ω scans	$R_{\text{int}} = 0.016$
Absorption correction: multi-scan (SADABS; Sheldrick, 1996)	$\theta_{\text{max}} = 26.5^\circ$, $\theta_{\text{min}} = 2.1^\circ$
$T_{\text{min}} = 0.975$, $T_{\text{max}} = 0.983$	$h = -8 \rightarrow 8$
	$k = -10 \rightarrow 10$
	$l = -13 \rightarrow 13$

Refinement

Refinement on F^2	Secondary atom site location: difference Fourier map
Least-squares matrix: full	Hydrogen site location: inferred from neighbouring sites
$R[F^2 > 2\sigma(F^2)] = 0.065$	H-atom parameters constrained
$wR(F^2) = 0.218$	$w = 1/[\sigma^2(F_o^2) + (0.1157P)^2 + 0.059P]$
$S = 1.00$	where $P = (F_o^2 + 2F_c^2)/3$
2321 reflections	$(\Delta/\sigma)_{\text{max}} < 0.001$
139 parameters	$\Delta\rho_{\text{max}} = 0.27 \text{ e } \text{\AA}^{-3}$
0 restraints	$\Delta\rho_{\text{min}} = -0.30 \text{ e } \text{\AA}^{-3}$
Primary atom site location: structure-invariant direct methods	

Special details

Geometry. All e.s.d.'s (except the e.s.d. in the dihedral angle between two l.s. planes) are estimated using the full covariance matrix. The cell e.s.d.'s are taken into account individually in the estimation of e.s.d.'s in distances, angles and torsion angles; correlations between e.s.d.'s in cell parameters are only used when they are defined by crystal symmetry. An approximate (isotropic) treatment of cell e.s.d.'s is used for estimating e.s.d.'s involving l.s. planes.

Refinement. Refinement of F^2 against ALL reflections. The weighted R -factor wR and goodness of fit S are based on F^2 , conventional R -factors R are based on F , with F set to zero for negative F^2 . The threshold expression of $F^2 > \sigma(F^2)$ is used only for calculating R -factors(gt) etc. and is not relevant to the choice of reflections for refinement. R -factors based on F^2 are statistically about twice as large as those based on F , and R -factors based on ALL data will be even larger.

Fractional atomic coordinates and isotropic or equivalent isotropic displacement parameters (\AA^2)

	x	y	z	$U_{\text{iso}}^*/U_{\text{eq}}$
C1	0.2119 (4)	0.3836 (3)	0.1188 (3)	0.0558 (7)
H1	0.1472	0.4851	0.1048	0.067*
C2	0.1460 (4)	0.2413 (3)	0.0920 (3)	0.0565 (7)
C3	0.2425 (4)	0.0894 (3)	0.1127 (3)	0.0540 (7)
C4	0.4023 (4)	0.0824 (3)	0.1594 (3)	0.0627 (8)
H4	0.4670	-0.0191	0.1730	0.075*
C5	0.4682 (4)	0.2247 (3)	0.1864 (3)	0.0616 (8)
H5	0.5768	0.2183	0.2183	0.074*
C6	0.3743 (4)	0.3774 (3)	0.1665 (3)	0.0518 (7)
C7	0.4394 (4)	0.5320 (3)	0.1971 (3)	0.0562 (7)
C8	0.6048 (4)	0.5200 (3)	0.2579 (3)	0.0661 (8)
H8A	0.7211	0.4946	0.1932	0.079*
H8B	0.5762	0.4244	0.3376	0.079*
C9	0.6490 (5)	0.6798 (4)	0.2985 (4)	0.0746 (9)
H9A	0.6914	0.7730	0.2176	0.090*
H9B	0.5302	0.7121	0.3565	0.090*

C10	0.8016 (5)	0.6562 (4)	0.3708 (4)	0.0818 (10)
H10A	0.9216	0.6285	0.3109	0.098*
H10B	0.7617	0.5589	0.4489	0.098*
C11	0.8435 (6)	0.8093 (5)	0.4187 (4)	0.1014 (12)
H11A	0.7271	0.8344	0.4833	0.122*
H11B	0.8805	0.9087	0.3422	0.122*
C12	1.0097 (8)	0.7713 (6)	0.4859 (5)	0.1353 (17)
H12A	0.9851	0.6605	0.5486	0.203*
H12B	1.0161	0.8568	0.5333	0.203*
H12C	1.1311	0.7729	0.4174	0.203*
O1	0.1692 (3)	-0.0474 (2)	0.0840 (2)	0.0678 (6)
H1A	0.2286	-0.1328	0.1064	0.102*
O2	-0.0156 (3)	0.2520 (2)	0.0467 (3)	0.0810 (7)
H2	-0.0279	0.1659	0.0214	0.121*
O3	0.3591 (3)	0.6667 (2)	0.1739 (2)	0.0714 (7)

Atomic displacement parameters (Å²)

	U^{11}	U^{22}	U^{33}	U^{12}	U^{13}	U^{23}
C1	0.0566 (15)	0.0368 (13)	0.0788 (19)	0.0104 (11)	-0.0238 (14)	-0.0190 (12)
C2	0.0543 (15)	0.0413 (13)	0.081 (2)	0.0079 (11)	-0.0261 (14)	-0.0214 (13)
C3	0.0582 (16)	0.0348 (12)	0.0747 (19)	0.0041 (11)	-0.0228 (14)	-0.0200 (12)
C4	0.0632 (17)	0.0372 (13)	0.100 (2)	0.0137 (12)	-0.0371 (16)	-0.0240 (14)
C5	0.0594 (16)	0.0436 (14)	0.094 (2)	0.0102 (12)	-0.0393 (16)	-0.0209 (14)
C6	0.0511 (14)	0.0376 (13)	0.0712 (18)	0.0060 (11)	-0.0207 (13)	-0.0186 (12)
C7	0.0621 (17)	0.0395 (14)	0.0705 (18)	0.0052 (12)	-0.0218 (14)	-0.0172 (12)
C8	0.0774 (19)	0.0475 (15)	0.085 (2)	0.0059 (13)	-0.0375 (17)	-0.0205 (14)
C9	0.083 (2)	0.0506 (16)	0.102 (2)	0.0032 (15)	-0.0437 (19)	-0.0220 (16)
C10	0.089 (2)	0.073 (2)	0.092 (2)	-0.0020 (18)	-0.034 (2)	-0.0281 (18)
C11	0.117 (3)	0.097 (3)	0.105 (3)	-0.017 (2)	-0.035 (2)	-0.047 (2)
C12	0.145 (4)	0.132 (4)	0.162 (4)	-0.001 (3)	-0.073 (4)	-0.064 (3)
O1	0.0716 (13)	0.0383 (9)	0.1094 (16)	0.0105 (9)	-0.0433 (12)	-0.0283 (10)
O2	0.0760 (13)	0.0531 (11)	0.147 (2)	0.0214 (10)	-0.0673 (14)	-0.0462 (12)
O3	0.0833 (14)	0.0400 (10)	0.1058 (16)	0.0155 (9)	-0.0440 (12)	-0.0271 (10)

Geometric parameters (Å, °)

C1—C2	1.376 (3)	C8—H8B	0.9700
C1—C6	1.392 (4)	C9—C10	1.491 (4)
C1—H1	0.9300	C9—H9A	0.9700
C2—O2	1.369 (3)	C9—H9B	0.9700
C2—C3	1.391 (3)	C10—C11	1.515 (4)
C3—C4	1.368 (3)	C10—H10A	0.9700
C3—O1	1.371 (3)	C10—H10B	0.9700
C4—C5	1.377 (4)	C11—C12	1.543 (6)
C4—H4	0.9300	C11—H11A	0.9700
C5—C6	1.385 (3)	C11—H11B	0.9700
C5—H5	0.9300	C12—H12A	0.9600

C6—C7	1.484 (3)	C12—H12B	0.9600
C7—O3	1.220 (3)	C12—H12C	0.9600
C7—C8	1.495 (4)	O1—H1A	0.8200
C8—C9	1.526 (4)	O2—H2	0.8200
C8—H8A	0.9700		
C2—C1—C6	120.8 (2)	C10—C9—C8	113.4 (3)
C2—C1—H1	119.6	C10—C9—H9A	108.9
C6—C1—H1	119.6	C8—C9—H9A	108.9
O2—C2—C1	119.0 (2)	C10—C9—H9B	108.9
O2—C2—C3	121.2 (2)	C8—C9—H9B	108.9
C1—C2—C3	119.7 (2)	H9A—C9—H9B	107.7
C4—C3—O1	123.5 (2)	C9—C10—C11	115.1 (3)
C4—C3—C2	119.8 (2)	C9—C10—H10A	108.5
O1—C3—C2	116.7 (2)	C11—C10—H10A	108.5
C3—C4—C5	120.5 (2)	C9—C10—H10B	108.5
C3—C4—H4	119.8	C11—C10—H10B	108.5
C5—C4—H4	119.8	H10A—C10—H10B	107.5
C4—C5—C6	120.7 (2)	C10—C11—C12	110.0 (3)
C4—C5—H5	119.7	C10—C11—H11A	109.7
C6—C5—H5	119.7	C12—C11—H11A	109.7
C5—C6—C1	118.5 (2)	C10—C11—H11B	109.7
C5—C6—C7	122.0 (2)	C12—C11—H11B	109.7
C1—C6—C7	119.5 (2)	H11A—C11—H11B	108.2
O3—C7—C6	120.8 (2)	C11—C12—H12A	109.5
O3—C7—C8	120.3 (2)	C11—C12—H12B	109.5
C6—C7—C8	119.0 (2)	H12A—C12—H12B	109.5
C7—C8—C9	115.3 (2)	C11—C12—H12C	109.5
C7—C8—H8A	108.4	H12A—C12—H12C	109.5
C9—C8—H8A	108.4	H12B—C12—H12C	109.5
C7—C8—H8B	108.4	C3—O1—H1A	109.5
C9—C8—H8B	108.4	C2—O2—H2	109.5
H8A—C8—H8B	107.5		

Hydrogen-bond geometry (\AA , $^\circ$)

$D-H\cdots A$	$D-H$	$H\cdots A$	$D\cdots A$	$D-H\cdots A$
O2—H2 \cdots O1	0.82	2.29	2.718 (2)	113
O2—H2 \cdots O1 ⁱ	0.82	2.11	2.828 (3)	147
O1—H1A \cdots O3 ⁱⁱ	0.82	1.93	2.749 (2)	176

Symmetry codes: (i) $-x, -y, -z$; (ii) $x, y-1, z$.