

Acta Crystallographica Section E

## Structure Reports

Online

ISSN 1600-5368

# N-[(Z)-4-Methoxybenzylidene](methoxy-carbonyl)methanamine oxide

Zeynep Keleşoğlu,<sup>a</sup> Zeynep Gültekin<sup>b</sup> and Orhan Büyükgüngör<sup>a\*</sup>

<sup>a</sup>Department of Physics, Ondokuz Mayıs University, TR-55139 Samsun, Turkey, and<sup>b</sup>Department of Chemistry, Çankırı Karatekin University, TR-18100 Çankırı, Turkey

Correspondence e-mail: orhanb@omu.edu.tr

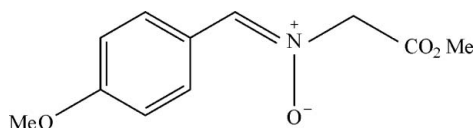
Received 5 August 2010; accepted 11 August 2010

Key indicators: single-crystal X-ray study;  $T = 296$  K; mean  $\sigma(\text{C}-\text{C}) = 0.003$  Å;  $R$  factor = 0.034;  $wR$  factor = 0.082; data-to-parameter ratio = 9.5.

The title compound,  $\text{C}_{11}\text{H}_{13}\text{NO}_4$ , contains a nitron group,  $\text{C}=\text{N}-\text{O}-\text{R}$ , the geometry of which shows a *Z* configuration with near planarity (r.m.s. deviation = 0.0787 Å) around the  $\text{C}=\text{N}$  double bond. An intramolecular  $\text{C}-\text{H}\cdots\text{O}$  hydrogen bond generates an *S*(6) ring motif. In the crystal packing, molecules are linked into  $R_2^2(12)$  dimers and  $R_2^2(14)$  rings via  $\text{C}-\text{H}\cdots\text{O}$  intermolecular hydrogen bonds.

## Related literature

For the application and synthesis of nitrones, see: Merino (2004); Mocours *et al.* (1995); Frederickson (1997); Gothelf & Jorgensen (2000); Merino *et al.* (1998); McCaig *et al.* (1998); Desvergues *et al.* (2005); Hanselmann *et al.* (2003); Pillard *et al.* (2007); Merino *et al.* (2008); Kobayashi *et al.* (2000). For the synthesis of the title compound, see: Diez-Martinez *et al.* (2010). For related structures, see: Bedford *et al.* (1991); Kliegel *et al.* (1998); Greci & Sgarabotto (1984); Christensen *et al.* (1990); Merino *et al.* (1996); Olszewski & Stadnicka (1995). For hydrogen-bond motifs, see: Bernstein *et al.* (1995).



## Experimental

### Crystal data

|   |                                   |
|---|-----------------------------------|
| $\text{C}_{11}\text{H}_{13}\text{NO}_4$ | $V = 1109.03$ (13) Å <sup>3</sup> |
| $M_r = 223.22$                          | $Z = 4$                           |
| Orthorhombic, $P2_12_12_1$              | Mo $K\alpha$ radiation            |
| $a = 4.3808$ (3) Å                      | $\mu = 0.10$ mm <sup>-1</sup>     |
| $b = 9.8207$ (7) Å                      | $T = 296$ K                       |
| $c = 25.7780$ (17) Å                    | $0.77 \times 0.46 \times 0.25$ mm |

### Data collection

|   |  |
|---|--|
| Stoe IPDS II diffractometer   | 5112 measured reflections              |
| Absorption correction: integration ( <i>X-RED32</i> ; Stoe & Cie, 2002) | 1391 independent reflections           |
| $T_{\min} = 0.953$ , $T_{\max} = 0.981$                                 | 1053 reflections with $I > 2\sigma(I)$ |
|   | $R_{\text{int}} = 0.051$               |

### Refinement

|                                 |   |
|---------------------------------|---|
| $R[F^2 > 2\sigma(F^2)] = 0.034$ | 146 parameters                                |
| $wR(F^2) = 0.082$               | H-atom parameters constrained                 |
| $S = 0.96$                      | $\Delta\rho_{\max} = 0.09$ e Å <sup>-3</sup>  |
| 1391 reflections                | $\Delta\rho_{\min} = -0.09$ e Å <sup>-3</sup> |

Table 1

Hydrogen-bond geometry (Å, °).

| $D-H\cdots A$  | $D-H$ | $H\cdots A$ | $D\cdots A$ | $D-H\cdots A$ |
|--|-------|-------------|-------------|---------------|
| $\text{C6}-\text{H6}\cdots\text{O2}$                 | 0.93  | 2.30        | 2.900 (3)   | 122           |
| $\text{C8}-\text{H8}\cdots\text{O3}^{\text{ii}}$     | 0.93  | 2.35        | 3.275 (3)   | 175           |
| $\text{C9}-\text{H9B}\cdots\text{O2}^{\text{ii}}$    | 0.97  | 2.52        | 3.353 (3)   | 144           |
| $\text{C11}-\text{H11C}\cdots\text{O2}^{\text{iii}}$ | 0.96  | 2.43        | 3.379 (3)   | 172           |

Symmetry codes: (i)  $x + \frac{1}{2}, -y + \frac{3}{2}, -z + 1$ ; (ii)  $x + 1, y, z$ ; (iii)  $x + \frac{1}{2}, -y + \frac{1}{2}, -z + 1$ .

Data collection: *X-AREA* (Stoe & Cie, 2002); cell refinement: *X-AREA*; data reduction: *X-RED32* (Stoe & Cie, 2002); program(s) used to solve structure: *SHELXS97* (Sheldrick, 2008); program(s) used to refine structure: *SHELXL97* (Sheldrick, 2008); molecular graphics: *ORTEP-3 for Windows* (Farrugia, 1997); software used to prepare material for publication: *WinGX* (Farrugia, 1999).

The authors thank Professor Magnus Rueping of RWTH Aachen University, Germany, for helpful discussions. The authors acknowledge the Faculty of Arts and Sciences, Ondokuz Mayıs University, Turkey, for the use of the Stoe IPDS II diffractometer (purchased under grant F.279 of the University Research Fund).

Supplementary data and figures for this paper are available from the IUCr electronic archives (Reference: BV2158).

## References

- Bedford, R. B., Chaloner, P. A. & Hitchcock, P. B. (1991). *Acta Cryst.* **C47**, 2484–2485.
- Bernstein, J., Davis, R. E., Shimoni, L. & Chang, N.-L. (1995). *Angew. Chem. Int. Ed. Engl.* **34**, 1555–1573.
- Christensen, D., Jorgensen, K. A. & Hazell, R. G. (1990). *J. Chem. Soc. Perkin Trans. 1*, pp. 2391–2397.
- Desvergues, S., Py, S. & Valle, Y. (2005). *J. Org. Chem.* **70**, 1459–1462.
- Diez-Martinez, A., Gultekin, Z., Delso, I., Tejero, T. & Merino, P. (2010). *Synthesis*, pp. 0678–0688.
- Farrugia, L. J. (1997). *J. Appl. Cryst.* **30**, 565.
- Farrugia, L. J. (1999). *J. Appl. Cryst.* **32**, 837–838.
- Flack, H. D. (1983). *Acta Cryst.* **A39**, 876–881.
- Frederickson, M. (1997). *Tetrahedron*, **53**, 403–425.
- Gothelf, K. V. & Jorgensen, K. A. (2000). *Chem. Commun.* pp. 1449–1458.
- Greci, L. & Sgarabotto, P. (1984). *J. Chem. Soc. Perkin Trans. 2*, pp. 1281–1284.
- Hanselmann, R., Zhou, J., Ma, P. & Confalone, P. N. (2003). *J. Org. Chem.* **68**, 8739–8741.
- Kliegel, W., Metge, J., Rettig, S. J. & Trotter, J. (1998). *Can. J. Chem.* **76**, 389–399.
- Kobayashi, K., Matoba, T., Irisawa, S., Takanohashi, A., Tanmatsu, M., Morikawa, O. & Konishi, H. (2000). *Bull. Chem. Soc. Jpn.* **73**, 2805–2809.
- McCaig, A. E., Meldrum, K. P. & Wightman, R. H. (1998). *Tetrahedron*, **54**, 9429–9446.
- Merino, P. (2004). *Science of Synthesis*, edited by G. A. Padwa, Vol. 27, ch. 13, pp. 511–580. Stuttgart: Thieme Verlag.

- Merino, P., Franco, S., Garces, N., Merchan, F. L. & Tejero, T. (1998). *Chem. Commun.* pp. 493–494.
- Merino, P., Mannucci, V. & Tejero, T. (2008). *Eur. J. Org. Chem.* pp. 3943–3959.
- Merino, P., Merchan, F. L., Tejero, T. & Lanaspá, A. (1996). *Acta Cryst. C* **52**, 218–219.
- Mocours, P., Braekman, J. C. & Daloze, D. (1995). *Tetrahedron*, **51**, 1415–1428.
- Olszewski, P. K. & Stadnicka, K. (1995). *Acta Cryst. C* **51**, 98–103.
- Pillard, C., Desvergnés, V. & Py, S. (2007). *Tetrahedron Lett.* **48**, 6209–6213.
- Sheldrick, G. M. (2008). *Acta Cryst. A* **64**, 112–122.
- Stoe & Cie (2002). *X-RED* and *X-AREA*. Stoe & Cie, Darmstadt, Germany.

## supporting information

*Acta Cryst.* (2010). E66, o2332–o2333 [https://doi.org/10.1107/S1600536810032289]

***N*-[(*Z*)-4-Methoxybenzylidene](methoxycarbonyl)methanamine oxide****Zeynep Keleşoğlu, Zeynep Gültekin and Orhan Büyükgüngör****S1. Comment**

Nitrones are important and versatile intermediates in organic synthesis since they undergo 1,3-dipolar cycloaddition reactions with a wide range of alkynes and alkenes to afford  $\Delta_2$ -isoxazolines (Mocours *et al.*, 1995) and isoxazolidines (Gothelf & Jorgensen, 2000; Frederickson, 1997), respectively. Various cyclic or acyclic nitrones have been reported and found to be highly reactive intermediates as 1,3-dipoles (Merino, 2004). The cycloadducts have found numerous application in the synthesis of nucleosides (Merino *et al.*, 1998), amino sugars (McCaig *et al.*, 1998), pyrrolizidineines (Desvergnès *et al.*, 2005) and amino acids (Hanselmann *et al.*, 2003). Nitrones are also useful intermediates for nucleophilic additions leading to the corresponding *N,N*-disubstituted hydroxylamines. Several types of nucleophile were used such as alkynes (Pillard *et al.*, 2007), alkyl Grignard reagent (Merino *et al.*, 2008) and enolates (Kobayashi *et al.*, 2000).

The geometry of the nitrone molecule, which shows a *Z* configuration with near planarity around the C=N double bond [C8—N1 = 1.303 (2) Å], is typical for aldonitrones (Bedford *et al.*, 1991; Kliegel *et al.*, 1998; Olszewski & Stadnicka, 1995; Greci & Sgarabotto, 1984; Christensen *et al.*, 1990). The torsion angles of O2—N1=C8—H8 and O2—N1=C8—C1 are 176.7 (3)° and -3.3 (3)°, respectively. These results are in good agreement with the literature (Merino *et al.*, 1996; Olszewski & Stadnicka, 1995). An intramolecular C6—H6···O2 hydrogen bond generates an *S*(6) ring motif (Bernstein *et al.*, 1995) (Fig. 1). In the crystal packing, molecules are linked into  $R_2^2(12)$  dimers and  $R_2^2(14)$  rings *via* C8—H8···O3 and C11—H11C···O2 intermolecular hydrogen bonds at (-1/2 + *x*, 1/2 - *y*, -*z*) and (-1/2 + *x*, -1/2 - *y*, -*z*), respectively (Table 1, Fig. 2). The benzene ring A (C1—C6) and *S*(6) rings are planar with the maximum r.m.s. deviation from the mean plane as -0.0234 (11) Å for N1 and these rings are coplanar with a dihedral angle of only 1.86 (10)°.

**S2. Experimental**

The title compound was synthesized by the literature method (Diez-Martinez *et al.*, 2010). To a solution of methyl glycine ester hydrochloride salt (4.0 g, 31.8 mmol) in CH<sub>2</sub>Cl<sub>2</sub> (70 ml) was added Et<sub>3</sub>N (4.4 ml, 31.8 mmol) and MgSO<sub>4</sub> (2 g) under an argon atmosphere at room temperature. The resulting mixture was stirred for 2 h, then anisaldehyde (3.9 ml, 31.8 mmol) was added. The reaction mixture was stirred at room temperature for an additional 24 h. The resulting precipitate was filtered through a pad of Celite and the filtrate washed with water (50 ml) and brine (50 ml), then dried over MgSO<sub>4</sub>. Solvent was removed under reduced pressure. The title compound imine (1) was obtained as a white solid in 77% yield. The crude imine (1) (4.0 g, 19.3 mmol) was dissolved in MeOH (50 ml) and MgSO<sub>4</sub> (2 g) was added as a drying agent. To this mixture UHP (urea-hydrogen peroxide) (5.5 g, 57.9 mmol) and MeReO<sub>3</sub> (methyltrioxorhenium) (96 mg, 0.38 mmol) were added under argon atmosphere at room temperature. The reaction mixture was stirred at room temperature for 7 h. After 7 h the solvent was removed *in vacuo*, the residue was washed with more CH<sub>2</sub>Cl<sub>2</sub> (3 × 50 ml) then filtered. The filtrate removed under *in vacuo* and the residue subjected to column chromatography eluting with EtOAc/Hexane (1:1). The title compound was obtained as a pale yellow solid in 47% yield. m.p. 65–66°C.

## S3. Refinement

The H atoms were positioned with idealized geometry using a riding model with C—H = 0.93–0.97 Å. All H atoms were refined with isotropic displacement parameters (set to 1.2 times of the  $U_{eq}$  of the parent atom). 915 Friedel pairs were averaged before the final refinement as the absolute structure could not be determined unambiguously.

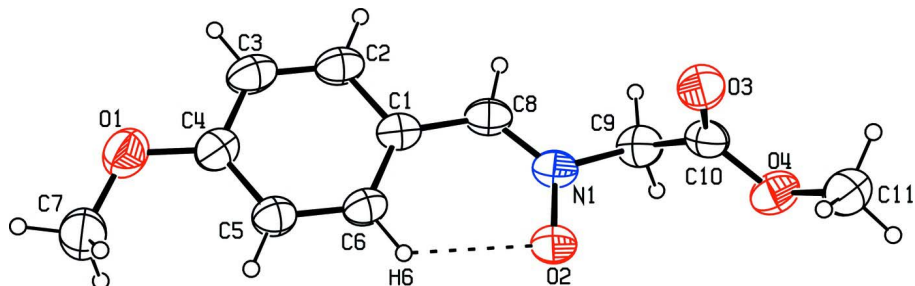


Figure 1

An ORTEP view of (I), with the atom-numbering scheme and 30% probability displacement ellipsoids.

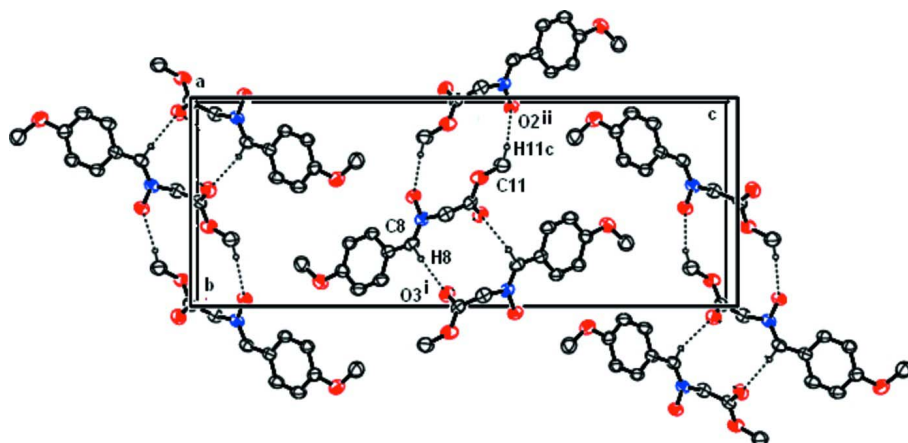


Figure 2

A packing diagram for (I), showing the C—H...O intermolecular hydrogen bonds, forming the  $R_2^2(12)$  dimers and  $R_2^2(14)$  rings. [Symmetry codes: (i)  $-1/2 + x, 1/2 - y, -z$ ; (ii)  $-1/2 + x, -1/2 - y, -z$ ]. H atoms not involved in hydrogen bonding (dashed lines) have been omitted for clarity.

*N*-[(*Z*)-4-methoxybenzylidene](methoxycarbonyl)methanamine oxide

*Crystal data*

$C_{11}H_{13}NO_4$

$M_r = 223.22$

Orthorhombic,  $P2_12_12_1$

Hall symbol:  $P\ 2ac\ 2ab$

$a = 4.3808$  (3) Å

$b = 9.8207$  (7) Å

$c = 25.7780$  (17) Å

$V = 1109.03$  (13) Å<sup>3</sup>

$Z = 4$

$F(000) = 472$

$D_x = 1.337$  Mg m<sup>-3</sup>

Mo  $K\alpha$  radiation,  $\lambda = 0.71073$  Å

Cell parameters from 5112 reflections

$\theta = 2.1$ – $27.1^\circ$

$\mu = 0.10$  mm<sup>-1</sup>

$T = 296$  K

Prism, colourless

$0.77 \times 0.46 \times 0.25$  mm

*Data collection*

|   |  |
|---|--|
| Stoe IPDS II diffractometer                         | 5112 measured reflections  |
| Radiation source: fine-focus sealed tube            | 1391 independent reflections   |
| Graphite monochromator                              | 1053 reflections with $I > 2\sigma(I)$                                 |
| rotation method scans                               | $R_{\text{int}} = 0.051$   |
| Absorption correction: integration                  | $\theta_{\text{max}} = 26.5^\circ$ , $\theta_{\text{min}} = 2.2^\circ$ |
| ( <i>X-RED32</i> ; Stoe & Cie, 2002)                | $h = -5 \rightarrow 5$   |
| $T_{\text{min}} = 0.953$ , $T_{\text{max}} = 0.981$ | $k = -12 \rightarrow 11$   |
|   | $l = -23 \rightarrow 32$   |

*Refinement*

|  |   |
|--|---|
| Refinement on $F^2$  | Hydrogen site location: inferred from neighbouring sites  |
| Least-squares matrix: full                                     | H-atom parameters constrained   |
| $R[F^2 > 2\sigma(F^2)] = 0.034$                                | $w = 1/[\sigma^2(F_o^2) + (0.0465P)^2]$   |
| $wR(F^2) = 0.082$  | where $P = (F_o^2 + 2F_c^2)/3$  |
| $S = 0.96$   | $(\Delta/\sigma)_{\text{max}} < 0.001$  |
| 1391 reflections   | $\Delta\rho_{\text{max}} = 0.09 \text{ e } \text{\AA}^{-3}$   |
| 146 parameters   | $\Delta\rho_{\text{min}} = -0.09 \text{ e } \text{\AA}^{-3}$  |
| 0 restraints   | Extinction correction: <i>SHELXL97</i> (Sheldrick, 2008), $F_c^* = kFc[1 + 0.001x Fc^2 \lambda^3 / \sin(2\theta)]^{-1/4}$ |
| Primary atom site location: structure-invariant direct methods | Extinction coefficient: 0.030 (4)   |
| Secondary atom site location: difference Fourier map           |   |

*Special details*

**Geometry.** All e.s.d.'s (except the e.s.d. in the dihedral angle between two l.s. planes) are estimated using the full covariance matrix. The cell e.s.d.'s are taken into account individually in the estimation of e.s.d.'s in distances, angles and torsion angles; correlations between e.s.d.'s in cell parameters are only used when they are defined by crystal symmetry. An approximate (isotropic) treatment of cell e.s.d.'s is used for estimating e.s.d.'s involving l.s. planes.

**Refinement.** Refinement of  $F^2$  against ALL reflections. The weighted  $R$ -factor  $wR$  and goodness of fit  $S$  are based on  $F^2$ , conventional  $R$ -factors  $R$  are based on  $F$ , with  $F$  set to zero for negative  $F^2$ . The threshold expression of  $F^2 > \sigma(F^2)$  is used only for calculating  $R$ -factors(gt) *etc.* and is not relevant to the choice of reflections for refinement.  $R$ -factors based on  $F^2$  are statistically about twice as large as those based on  $F$ , and  $R$ -factors based on ALL data will be even larger.

*Fractional atomic coordinates and isotropic or equivalent isotropic displacement parameters ( $\text{\AA}^2$ )*

|     | <i>x</i>    | <i>y</i>   | <i>z</i>     | $U_{\text{iso}}^*/U_{\text{eq}}$ |
|-----|-------------|------------|--------------|----------------------------------|
| C1  | 0.6012 (4)  | 0.7397 (2) | 0.36104 (8)  | 0.0608 (5)                       |
| C2  | 0.5996 (5)  | 0.8775 (2) | 0.34738 (10) | 0.0734 (6)                       |
| H2  | 0.7092      | 0.9392     | 0.3674       | 0.088*                           |
| C3  | 0.4417 (6)  | 0.9235 (2) | 0.30549 (11) | 0.0808 (7)                       |
| H3  | 0.4449      | 1.0157     | 0.2973       | 0.097*                           |
| C4  | 0.2769 (5)  | 0.8343 (2) | 0.27506 (10) | 0.0700 (6)                       |
| C5  | 0.2692 (5)  | 0.6979 (2) | 0.28817 (9)  | 0.0669 (6)                       |
| H5  | 0.1550      | 0.6373     | 0.2684       | 0.080*                           |
| C6  | 0.4307 (5)  | 0.6515 (2) | 0.33055 (9)  | 0.0642 (5)                       |
| H6  | 0.4251      | 0.5594     | 0.3389       | 0.077*                           |
| C7  | -0.0090 (7) | 0.8031 (3) | 0.19685 (11) | 0.0960 (8)                       |
| H7A | -0.1660     | 0.7516     | 0.2139       | 0.115*                           |
| H7B | 0.1394      | 0.7421     | 0.1824       | 0.115*                           |
| H7C | -0.0977     | 0.8568     | 0.1696       | 0.115*                           |
| C8  | 0.7873 (4)  | 0.7021 (2) | 0.40462 (9)  | 0.0663 (6)                       |

|      |            |              |              |            |
|------|------------|--------------|--------------|------------|
| H8   | 0.8911     | 0.7726       | 0.4210       | 0.080*     |
| C9   | 1.0392 (4) | 0.5582 (3)   | 0.46700 (10) | 0.0735 (6) |
| H9A  | 1.1358     | 0.6433       | 0.4767       | 0.088*     |
| H9B  | 1.1972     | 0.4944       | 0.4568       | 0.088*     |
| C10  | 0.8628 (4) | 0.5022 (2)   | 0.51187 (9)  | 0.0651 (6) |
| C11  | 0.8063 (7) | 0.3210 (2)   | 0.57071 (12) | 0.0936 (8) |
| H11A | 0.5973     | 0.3064       | 0.5610       | 0.112*     |
| H11B | 0.8145     | 0.3798       | 0.6004       | 0.112*     |
| H11C | 0.8999     | 0.2354       | 0.5790       | 0.112*     |
| N1   | 0.8278 (3) | 0.58064 (18) | 0.42386 (7)  | 0.0635 (5) |
| O1   | 0.1341 (5) | 0.88972 (18) | 0.23310 (7)  | 0.0935 (5) |
| O2   | 0.6925 (3) | 0.47139 (14) | 0.40781 (7)  | 0.0756 (4) |
| O3   | 0.6482 (4) | 0.55930 (17) | 0.53126 (7)  | 0.0837 (5) |
| O4   | 0.9683 (3) | 0.38384 (16) | 0.52795 (7)  | 0.0818 (5) |

*Atomic displacement parameters (Å<sup>2</sup>)*

|     | $U^{11}$    | $U^{22}$    | $U^{33}$    | $U^{12}$     | $U^{13}$     | $U^{23}$     |
|-----|-------------|-------------|-------------|--------------|--------------|--------------|
| C1  | 0.0565 (10) | 0.0555 (12) | 0.0703 (14) | −0.0055 (9)  | 0.0131 (10)  | −0.0071 (10) |
| C2  | 0.0762 (13) | 0.0549 (13) | 0.0892 (17) | −0.0113 (11) | 0.0137 (13)  | −0.0082 (12) |
| C3  | 0.0940 (15) | 0.0523 (13) | 0.0962 (18) | −0.0079 (12) | 0.0194 (15)  | −0.0010 (13) |
| C4  | 0.0741 (12) | 0.0629 (14) | 0.0728 (15) | 0.0046 (11)  | 0.0182 (11)  | 0.0054 (11)  |
| C5  | 0.0696 (12) | 0.0591 (12) | 0.0720 (16) | −0.0034 (10) | 0.0081 (11)  | −0.0023 (10) |
| C6  | 0.0685 (11) | 0.0501 (11) | 0.0741 (14) | −0.0057 (9)  | 0.0072 (11)  | −0.0025 (10) |
| C7  | 0.1023 (18) | 0.098 (2)   | 0.0877 (18) | 0.0114 (18)  | −0.0029 (17) | 0.0066 (15)  |
| C8  | 0.0579 (10) | 0.0614 (12) | 0.0794 (15) | −0.0110 (10) | 0.0088 (11)  | −0.0134 (11) |
| C9  | 0.0527 (9)  | 0.0765 (15) | 0.0913 (16) | 0.0053 (10)  | −0.0047 (12) | −0.0109 (12) |
| C10 | 0.0557 (9)  | 0.0672 (13) | 0.0725 (14) | 0.0086 (10)  | −0.0106 (10) | −0.0172 (11) |
| C11 | 0.1051 (17) | 0.0735 (16) | 0.102 (2)   | 0.0058 (15)  | −0.0075 (17) | 0.0015 (14)  |
| N1  | 0.0534 (7)  | 0.0632 (11) | 0.0740 (12) | −0.0055 (8)  | 0.0053 (8)   | −0.0128 (9)  |
| O1  | 0.1121 (12) | 0.0784 (11) | 0.0898 (12) | 0.0083 (11)  | 0.0037 (11)  | 0.0148 (10)  |
| O2  | 0.0860 (9)  | 0.0599 (9)  | 0.0809 (10) | −0.0109 (8)  | −0.0067 (9)  | −0.0087 (7)  |
| O3  | 0.0827 (9)  | 0.0877 (11) | 0.0806 (11) | 0.0308 (9)   | 0.0081 (9)   | −0.0077 (9)  |
| O4  | 0.0730 (8)  | 0.0676 (10) | 0.1048 (12) | 0.0181 (8)   | 0.0022 (9)   | −0.0034 (9)  |

*Geometric parameters (Å, °)*

|       |           |          |           |
|-------|-----------|----------|-----------|
| C1—C6 | 1.388 (3) | C7—H7C   | 0.9600    |
| C1—C2 | 1.399 (3) | C8—N1    | 1.304 (3) |
| C1—C8 | 1.436 (3) | C8—H8    | 0.9300    |
| C2—C3 | 1.359 (4) | C9—N1    | 1.464 (3) |
| C2—H2 | 0.9300    | C9—C10   | 1.496 (3) |
| C3—C4 | 1.380 (3) | C9—H9A   | 0.9700    |
| C3—H3 | 0.9300    | C9—H9B   | 0.9700    |
| C4—O1 | 1.363 (3) | C10—O3   | 1.203 (2) |
| C4—C5 | 1.382 (3) | C10—O4   | 1.318 (3) |
| C5—C6 | 1.379 (3) | C11—O4   | 1.449 (3) |
| C5—H5 | 0.9300    | C11—H11A | 0.9600    |

|             |              |               |             |
|-------------|--------------|---------------|-------------|
| C6—H6       | 0.9300       | C11—H11B      | 0.9600      |
| C7—O1       | 1.410 (3)    | C11—H11C      | 0.9600      |
| C7—H7A      | 0.9600       | N1—O2         | 1.294 (2)   |
| C7—H7B      | 0.9600       |               |             |
| C6—C1—C2    | 117.3 (2)    | N1—C8—C1      | 127.57 (19) |
| C6—C1—C8    | 126.0 (2)    | N1—C8—H8      | 116.2       |
| C2—C1—C8    | 116.64 (19)  | C1—C8—H8      | 116.2       |
| C3—C2—C1    | 121.6 (2)    | N1—C9—C10     | 108.42 (15) |
| C3—C2—H2    | 119.2        | N1—C9—H9A     | 110.0       |
| C1—C2—H2    | 119.2        | C10—C9—H9A    | 110.0       |
| C2—C3—C4    | 120.5 (2)    | N1—C9—H9B     | 110.0       |
| C2—C3—H3    | 119.8        | C10—C9—H9B    | 110.0       |
| C4—C3—H3    | 119.8        | H9A—C9—H9B    | 108.4       |
| O1—C4—C5    | 124.8 (2)    | O3—C10—O4     | 123.7 (2)   |
| O1—C4—C3    | 116.0 (2)    | O3—C10—C9     | 123.6 (2)   |
| C5—C4—C3    | 119.3 (2)    | O4—C10—C9     | 112.71 (18) |
| C4—C5—C6    | 120.1 (2)    | O4—C11—H11A   | 109.5       |
| C4—C5—H5    | 120.0        | O4—C11—H11B   | 109.5       |
| C6—C5—H5    | 120.0        | H11A—C11—H11B | 109.5       |
| C5—C6—C1    | 121.3 (2)    | O4—C11—H11C   | 109.5       |
| C5—C6—H6    | 119.4        | H11A—C11—H11C | 109.5       |
| C1—C6—H6    | 119.4        | H11B—C11—H11C | 109.5       |
| O1—C7—H7A   | 109.5        | O2—N1—C8      | 125.08 (18) |
| O1—C7—H7B   | 109.5        | O2—N1—C9      | 114.05 (17) |
| H7A—C7—H7B  | 109.5        | C8—N1—C9      | 120.86 (17) |
| O1—C7—H7C   | 109.5        | C4—O1—C7      | 119.3 (2)   |
| H7A—C7—H7C  | 109.5        | C10—O4—C11    | 116.31 (17) |
| H7B—C7—H7C  | 109.5        |               |             |
| C6—C1—C2—C3 | -1.0 (3)     | C2—C1—C8—N1   | -179.0 (2)  |
| C8—C1—C2—C3 | 177.2 (2)    | N1—C9—C10—O3  | -57.6 (3)   |
| C1—C2—C3—C4 | 0.1 (3)      | N1—C9—C10—O4  | 122.64 (18) |
| C2—C3—C4—O1 | -178.1 (2)   | C1—C8—N1—O2   | -3.3 (3)    |
| C2—C3—C4—C5 | 1.2 (3)      | C1—C8—N1—C9   | 176.68 (18) |
| O1—C4—C5—C6 | 177.8 (2)    | C10—C9—N1—O2  | -60.8 (2)   |
| C3—C4—C5—C6 | -1.5 (3)     | C10—C9—N1—C8  | 119.2 (2)   |
| C4—C5—C6—C1 | 0.5 (3)      | C5—C4—O1—C7   | -6.6 (3)    |
| C2—C1—C6—C5 | 0.7 (3)      | C3—C4—O1—C7   | 172.7 (2)   |
| C8—C1—C6—C5 | -177.30 (19) | O3—C10—O4—C11 | 1.4 (3)     |
| C6—C1—C8—N1 | -0.9 (3)     | C9—C10—O4—C11 | -178.8 (2)  |

Hydrogen-bond geometry ( $\text{\AA}$ ,  $^\circ$ )

| $D-H\cdots A$                  | $D-H$ | $H\cdots A$ | $D\cdots A$ | $D-H\cdots A$ |
|--------------------------------|-------|-------------|-------------|---------------|
| C6—H6 $\cdots$ O2              | 0.93  | 2.30        | 2.900 (3)   | 122           |
| C8—H8 $\cdots$ O3 <sup>i</sup> | 0.93  | 2.35        | 3.275 (3)   | 175           |

---

|                              |      |      |           |     |
|------------------------------|------|------|-----------|-----|
| C9—H9B···O2 <sup>ii</sup>    | 0.97 | 2.52 | 3.353 (3) | 144 |
| C11—H11C···O2 <sup>iii</sup> | 0.96 | 2.43 | 3.379 (3) | 172 |

---

Symmetry codes: (i)  $x+1/2, -y+3/2, -z+1$ ; (ii)  $x+1, y, z$ ; (iii)  $x+1/2, -y+1/2, -z+1$ .