

# Poly[bis[ $\mu$ -1,4-bis(1*H*-imidazol-5-yl)benzene- $\kappa^2$ N<sup>3</sup>:N<sup>3'</sup>]]diformatomanganese(II)]

Shui-Sheng Chen,<sup>a\*</sup> Sen-Lin Yang,<sup>a</sup> Shu-Ping Zhang<sup>a</sup> and Zi-Qiang Lu<sup>b</sup>

<sup>a</sup>Department of Chemistry, Fuyang Normal College, Fuyang, Anhui 236041, People's Republic of China, and <sup>b</sup>Key Laboratory of Functional Organometallic Materials, Department of Chemistry and Materials Science, Hengyang Normal University, Luoyang, Henan 471022, People's Republic of China

Correspondence e-mail: sscfync@163.com

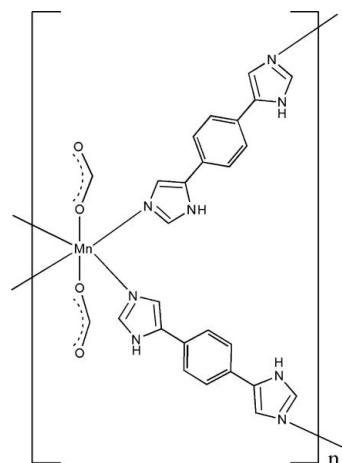
Received 29 September 2010; accepted 28 October 2010

Key indicators: single-crystal X-ray study;  $T = 293$  K; mean  $\sigma(\text{C}-\text{C}) = 0.003$  Å;  $R$  factor = 0.036;  $wR$  factor = 0.101; data-to-parameter ratio = 13.6.

In the title compound,  $[\text{Mn}(\text{CHO}_2)_2(\text{C}_{12}\text{H}_{10}\text{N}_4)_2]_n$ , the  $\text{Mn}^{\text{II}}$  atom and the benzene ring of the ligand lie on an inversion centers. The  $\text{Mn}^{\text{II}}$  atom has an octahedral coordination environment composed of four N atoms from two different symmetry-related *N*-heterocyclic ligands forming the basal plane, and two O atoms from symmetry-related formate anions occupying the apical positions. The title compound forms a two-dimensional (4,4) net parallel to (100) with all the  $\text{Mn}^{\text{II}}$  atoms lying on a plane. The crystal structure is consolidated by intermolecular  $\text{N}-\text{H}\cdots\text{O}$  hydrogen bonds.

## Related literature

For related literature on transition metal complex assembly, see: Kitagawa & Kondo (1998). For related literature on novel coordination networks belonging to entangled systems, see: Batten & Robson (1998); Hoskins *et al.* (1997*a,b*). For a related  $\text{Mn}^{\text{II}}$  complex, see: Zhao *et al.* (2009); Zhu *et al.* (2010). For three-dimensional structures, see: Tian *et al.* (2007).



## Experimental

### Crystal data

$[\text{Mn}(\text{CHO}_2)_2(\text{C}_{12}\text{H}_{10}\text{N}_4)_2]$   
 $M_r = 565.46$   
 Monoclinic,  $P2_1/c$   
 $a = 7.3240$  (8) Å  
 $b = 12.1313$  (13) Å  
 $c = 14.1802$  (15) Å  
 $\beta = 100.704$  (2)°

$V = 1238.0$  (2) Å<sup>3</sup>  
 $Z = 2$   
 Mo  $K\alpha$  radiation  
 $\mu = 0.59$  mm<sup>-1</sup>  
 $T = 293$  K  
 $0.21 \times 0.16 \times 0.12$  mm

### Data collection

Bruker SMART APEXII CCD diffractometer  
 Absorption correction: multi-scan (*SADABS*; Sheldrick, 1996)  
 $T_{\text{min}} = 0.887$ ,  $T_{\text{max}} = 0.933$

6495 measured reflections  
 2420 independent reflections  
 2196 reflections with  $I > 2\sigma(I)$   
 $R_{\text{int}} = 0.043$

### Refinement

$R[F^2 > 2\sigma(F^2)] = 0.036$   
 $wR(F^2) = 0.101$   
 $S = 1.06$   
 2420 reflections

178 parameters  
 H-atom parameters constrained  
 $\Delta\rho_{\text{max}} = 0.30$  e Å<sup>-3</sup>  
 $\Delta\rho_{\text{min}} = -0.25$  e Å<sup>-3</sup>

**Table 1**

Hydrogen-bond geometry (Å, °).

| $D-\text{H}\cdots A$                             | $D-\text{H}$ | $\text{H}\cdots A$ | $D\cdots A$ | $D-\text{H}\cdots A$ |
|--|--------------|--------------------|-------------|----------------------|
| $\text{N}2-\text{H}2\cdots\text{O}2^{\text{i}}$  | 0.86         | 2.00               | 2.840 (2)   | 165                  |
| $\text{N}4-\text{H}4\cdots\text{O}2^{\text{ii}}$ | 0.86         | 1.95               | 2.736 (2)   | 151                  |

Symmetry codes: (i)  $-x + 1, y + \frac{1}{2}, -z + \frac{1}{2}$ ; (ii)  $-x, y + \frac{1}{2}, -z + \frac{1}{2}$ .

Data collection: *APEX2* (Bruker, 2003); cell refinement: *SAINT* (Bruker, 2003); data reduction: *SAINT*; program(s) used to solve structure: *SHELXS97* (Sheldrick, 2008); program(s) used to refine structure: *SHELXL97* (Sheldrick, 2008); molecular graphics: *SHELXTL* (Sheldrick, 2008); software used to prepare material for publication: *SHELXTL*.

This work was supported by the Natural Science Foundation of Anhui Provincial Education Commission (grant No. Kj2009A047Zc), the Construct Program of the Key Discipline in Henan Province, Luoyang Bureau of Science and Technology (grant No. 2009 K J29) and the Research Award Fund for Outstanding Young Teachers of Henan Province (2008).

---

Supplementary data and figures for this paper are available from the IUCr electronic archives (Reference: BX2313).

---

## References

- Batten, S. R. & Robson, R. (1998). *Angew. Chem. Int. Ed.* **37**, 1460–1494.
- Bruker (2003). *APEX2* and *SAINT*. Bruker AXS Inc., Madison, Wisconsin, USA.
- Hoskins, B. F., Robson, R. & Slizys, D. A. (1997a). *Angew. Chem. Int. Ed.* **36**, 2336–2338.
- Hoskins, B. F., Robson, R. & Slizys, D. A. (1997b). *J. Am. Chem. Soc.* **119**, 2952–2953.
- Kitagawa, S. & Kondo, M. (1998). *Bull. Chem. Soc. Jpn.* **71**, 1739–1753.
- Sheldrick, G. M. (1996). *SADABS*. University of Gottingen, Germany.
- Sheldrick, G. M. (2008). *Acta Cryst.* **A64**, 112–122.
- Tian, Z. F., Lin, J. G., Su, Y., Wen, L. L., Liu, Y. M., Zhu, H. Z. & Meng, Q. J. (2007). *Cryst. Growth Des.* **7**, 1863–1867.
- Zhao, J., Zheng, X.-G. & Hu, Z.-Z. (2009). *Acta Cryst.* **E65**, m1642.
- Zhu, L., Wang, D. & Xu, H. (2010). *Acta Cryst.* **E66**, m513.

## supporting information

*Acta Cryst.* (2010). E66, m1501–m1502 [https://doi.org/10.1107/S1600536810044053]

**Poly[bis[ $\mu$ -1,4-bis(1*H*-imidazol-5-yl)benzene- $\kappa^2$ N<sup>3</sup>:N<sup>3'</sup>]]diformatomanganese(II)]****Shui-Sheng Chen, Sen-Lin Yang, Shu-Ping Zhang and Zi-Qiang Lu****S1. Comment**

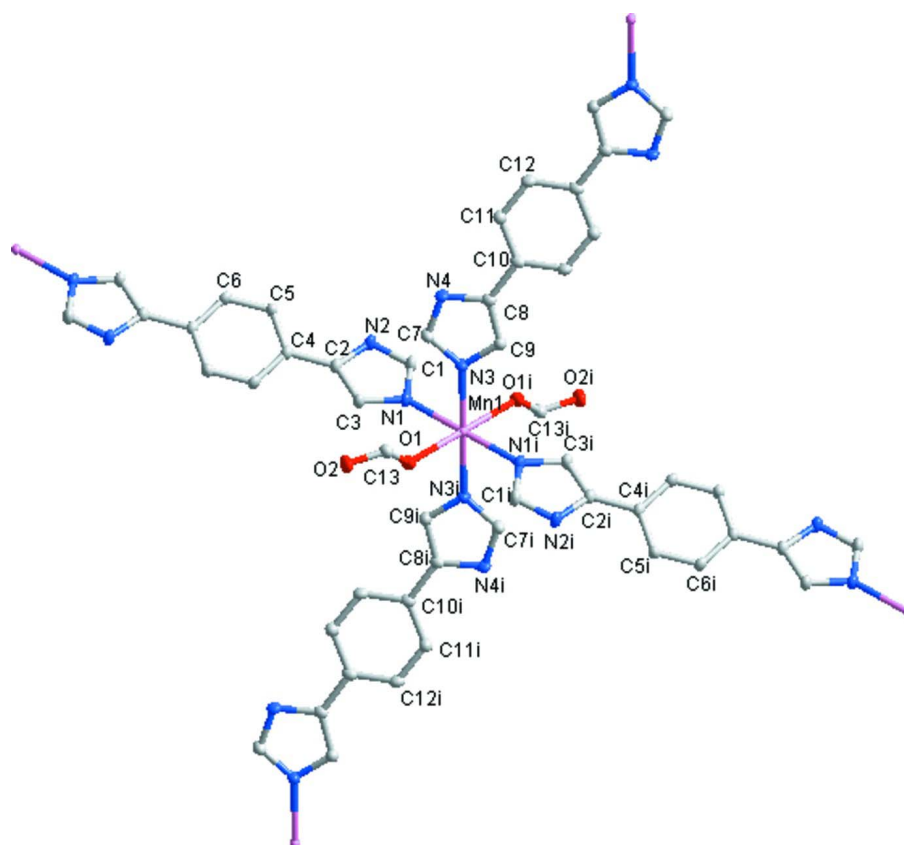
Recently, a great deal of interest in transition metal complex assembly has been devoted to the development of rational synthetic routes to novel crystal frameworks, due to their potential applications in many areas (Kitagawa *et al.*, 1998). So far large quantities of novel coordination networks belonging to entangled systems have been reported in the literature (Batten *et al.*, 1998). It has been demonstrated that the flexible bridging ligand can easily construct entangled systems. For example, 1,4-bis(imidazol-1-yl-methyl) benzene (bix) formed an infinite polyrotaxane network of [Ag<sub>2</sub>(bix)<sub>3</sub>(NO<sub>3</sub>)<sub>2</sub>] by reactions with silver nitrate (Hoskins *et al.*, 1997*a*) and gave a two-dimensional interpenetrated network of [Zn(bix)<sub>2</sub>(NO<sub>3</sub>)<sub>2</sub>·4.5H<sub>2</sub>O] by reactions with zinc nitrate which has both polyrotaxane and polycatenane characters (Hoskins *et al.*, 1997*b*). As an extension of above work, we report a new entangled metal complex [Mn(C<sub>24</sub>H<sub>20</sub>N<sub>8</sub>)<sub>2</sub>(HCOO)<sub>2</sub>]<sub>n</sub> (I) based on rigid 1,4-di(1*H*-imidazol-4-yl)benzene ligand (*L*) and metal Mn<sup>II</sup> salts. In the title compound, the Mn<sup>II</sup> atom and the ring benzene of the ligand are lies on inversion center. The Mn<sup>II</sup> has an octahedral coordination environment surrounded by four nitrogen atoms from two different N-heterocyclic ligands symmetry-related forming the basal plane and two oxygen donors from one formate anion symmetry-related occupying the apical positions (Fig. 1). The Mn—N distances are comparable to those found in other crystallographically characterized Mn<sup>II</sup> complex (Zhao *et al.*, 2009) and Mn—O distance is coincident with another Mn<sup>II</sup> complex (Zhu *et al.*, 2010). The title compound form two-dimensional (4,4) net and its building unit is [Mn(*L*)]. The Mn<sup>II</sup> are connected to a 1D linear chain along b-axis. The ligand, *L*, link Mn<sup>II</sup> ions in adjacent chains by the same mode as described above, which makes the Mn<sup>II</sup> ions links another 1D chain along c-axis. Therefore, the title compound is further connect to a 2D infinite structure in bc plane, Fig. 2. The void spaces within the [Mn(*L*)<sub>2</sub>]<sub>n</sub> coordination polymer layers permit mutual inclined two parallel sets of layers to angle into three dimensional framework (Tian *et al.*, 2007) (Fig. 3). The crystal structure of the title compound is stabilized by two intermolecular N—H···O interactions with average H···O distances 2.00 Å and N—H···O angles in the range 151–165°.

**S2. Experimental**

All reagents and solvents were used as obtained commercially without further purification. A mixture containing MnCl<sub>2</sub>·4H<sub>2</sub>O (19.8 mg, 0.05 mmol), *L* (27.6 mg, 0.1 mmol), DMF (N,N'-dimethylformamide, 1 mL), 10 ml H<sub>2</sub>O was sealed in a 16 ml Teflon-lined stainless steel container and heated at 393 K for 72 h. After cooling to room temperature within 12 h, block brown crystals of (I) suitable for X-ray diffraction analysis were obtained in 69% Yield.

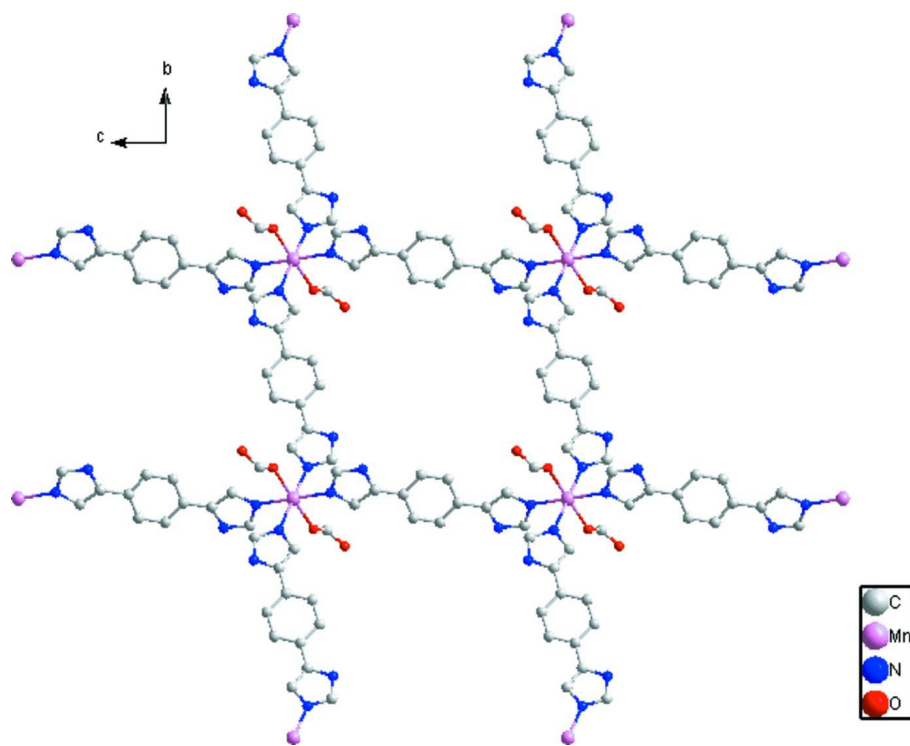
**S3. Refinement**

H atoms bonded to C atoms were placed geometrically and treated as riding, with C—H distances 0.93 Å and  $U_{\text{iso}}(\text{H}) = 1.2U_{\text{eq}}(\text{C})$ . The amide H atoms were located from difference maps and refined with the N—H distances restrained to 0.86 Å and  $U_{\text{iso}}(\text{H}) = 1.2U_{\text{eq}}(\text{N})$ .



**Figure 1**

The *ORTEP* drawing of the title compound (I). Displacement ellipsoids are drawn at 30% probability level. Symmetry codes: (i) 1-x, 1-y, 1-z.



**Figure 2**

Two-dimensional (4,4) rectangular grid  $[\text{Mn}(\text{L})_2]_n$  coordination polymer layer motif along the bc plane of the compound (I).

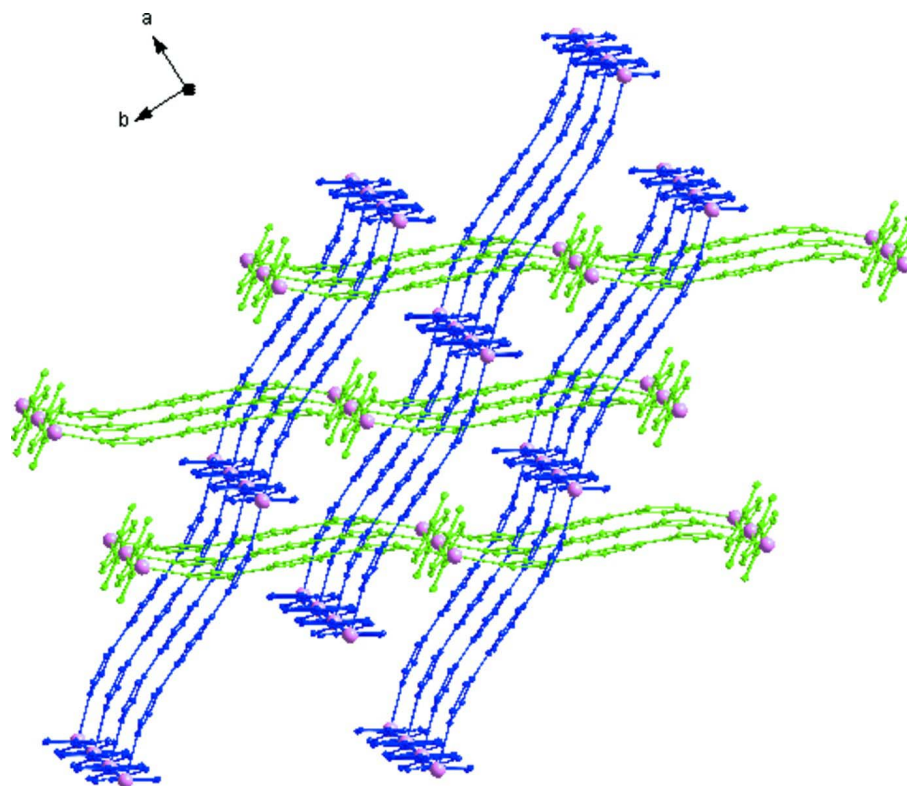


Figure 3

The three-dimensional structure built from two-dimension mutual inclined interpenetration of the compound (I).

**Poly[bis[ $\mu$ -1,4-bis(1*H*-imidazol-5-yl)benzene-  $\kappa^2N^3:N^3$ ]diformatomanganese(II)]**

*Crystal data*

[Mn(CHO<sub>2</sub>)<sub>2</sub>(C<sub>24</sub>H<sub>20</sub>N<sub>8</sub>)<sub>2</sub>]

$M_r = 565.46$

Monoclinic,  $P2_1/c$

Hall symbol: -P 2ybc

$a = 7.3240$  (8) Å

$b = 12.1313$  (13) Å

$c = 14.1802$  (15) Å

$\beta = 100.704$  (2)°

$V = 1238.0$  (2) Å<sup>3</sup>

$Z = 2$

$F(000) = 582$

$D_x = 1.517$  Mg m<sup>-3</sup>

Mo  $K\alpha$  radiation,  $\lambda = 0.71073$  Å

Cell parameters from 3510 reflections

$\theta = 2.2$ – $28.2$ °

$\mu = 0.59$  mm<sup>-1</sup>

$T = 293$  K

Block, brown

$0.21 \times 0.16 \times 0.12$  mm

*Data collection*

Bruker SMART APEXII CCD

diffractometer

Radiation source: fine-focus sealed tube

Graphite monochromator

$\varphi$  and  $\omega$  scans

Absorption correction: multi-scan

(*SADABS*; Sheldrick, 1996)

$T_{\min} = 0.887$ ,  $T_{\max} = 0.933$

6495 measured reflections

2420 independent reflections

2196 reflections with  $I > 2\sigma(I)$

$R_{\text{int}} = 0.043$

$\theta_{\max} = 26.0$ °,  $\theta_{\min} = 2.2$ °

$h = -9 \rightarrow 4$

$k = -14 \rightarrow 14$

$l = -17 \rightarrow 17$

Refinement

Refinement on  $F^2$

Least-squares matrix: full

$R[F^2 > 2\sigma(F^2)] = 0.036$

$wR(F^2) = 0.101$

$S = 1.06$

2420 reflections

178 parameters

0 restraints

Primary atom site location: structure-invariant  
direct methods

Secondary atom site location: difference Fourier  
map

Hydrogen site location: inferred from  
neighbouring sites

H-atom parameters constrained

$w = 1/[\sigma^2(F_o^2) + (0.0581P)^2 + 0.230P]$

where  $P = (F_o^2 + 2F_c^2)/3$

$(\Delta/\sigma)_{\max} < 0.001$

$\Delta\rho_{\max} = 0.30 \text{ e } \text{Å}^{-3}$

$\Delta\rho_{\min} = -0.25 \text{ e } \text{Å}^{-3}$

Special details

**Geometry.** All e.s.d.'s (except the e.s.d. in the dihedral angle between two l.s. planes) are estimated using the full covariance matrix. The cell e.s.d.'s are taken into account individually in the estimation of e.s.d.'s in distances, angles and torsion angles; correlations between e.s.d.'s in cell parameters are only used when they are defined by crystal symmetry. An approximate (isotropic) treatment of cell e.s.d.'s is used for estimating e.s.d.'s involving l.s. planes.

**Refinement.** Refinement of  $F^2$  against ALL reflections. The weighted  $R$ -factor  $wR$  and goodness of fit  $S$  are based on  $F^2$ , conventional  $R$ -factors  $R$  are based on  $F$ , with  $F$  set to zero for negative  $F^2$ . The threshold expression of  $F^2 > \sigma(F^2)$  is used only for calculating  $R$ -factors(gt) *etc.* and is not relevant to the choice of reflections for refinement.  $R$ -factors based on  $F^2$  are statistically about twice as large as those based on  $F$ , and  $R$ -factors based on ALL data will be even larger.

Fractional atomic coordinates and isotropic or equivalent isotropic displacement parameters ( $\text{Å}^2$ )

|     | $x$         | $y$          | $z$           | $U_{\text{iso}}^*/U_{\text{eq}}$ |
|-----|-------------|--------------|---------------|----------------------------------|
| C1  | 0.7024 (3)  | 0.61227 (17) | 0.34180 (14)  | 0.0363 (5)                       |
| H1  | 0.7649      | 0.6613       | 0.3869        | 0.044*                           |
| C2  | 0.5906 (3)  | 0.53538 (16) | 0.20304 (13)  | 0.0292 (4)                       |
| C3  | 0.5424 (3)  | 0.47633 (17) | 0.27654 (14)  | 0.0319 (5)                       |
| H3  | 0.4721      | 0.4120       | 0.2690        | 0.038*                           |
| C4  | 0.5462 (3)  | 0.51810 (15) | 0.09923 (14)  | 0.0265 (4)                       |
| C5  | 0.5767 (3)  | 0.59952 (16) | 0.03487 (13)  | 0.0289 (4)                       |
| H5  | 0.6284      | 0.6666       | 0.0576        | 0.035*                           |
| C6  | 0.5306 (3)  | 0.58109 (16) | -0.06262 (13) | 0.0298 (4)                       |
| H6  | 0.5514      | 0.6364       | -0.1048       | 0.036*                           |
| C7  | 0.2276 (3)  | 0.66265 (16) | 0.35944 (15)  | 0.0386 (5)                       |
| H7  | 0.2459      | 0.6234       | 0.3056        | 0.046*                           |
| C8  | 0.1345 (3)  | 0.79075 (15) | 0.44854 (14)  | 0.0292 (4)                       |
| C9  | 0.2315 (3)  | 0.71098 (15) | 0.50414 (14)  | 0.0323 (4)                       |
| H9  | 0.2541      | 0.7105       | 0.5709        | 0.039*                           |
| C10 | 0.0609 (3)  | 0.89682 (15) | 0.47356 (14)  | 0.0290 (4)                       |
| C11 | -0.0078 (3) | 0.97491 (17) | 0.40435 (16)  | 0.0351 (5)                       |
| H11 | -0.0133     | 0.9588       | 0.3398        | 0.042*                           |
| C12 | -0.0679 (3) | 1.07637 (16) | 0.43069 (15)  | 0.0355 (5)                       |
| H12 | -0.1139     | 1.1276       | 0.3834        | 0.043*                           |
| C13 | 0.1608 (3)  | 0.36826 (16) | 0.37714 (14)  | 0.0339 (5)                       |
| H13 | 0.0769      | 0.4215       | 0.3893        | 0.041*                           |
| Mn1 | 0.5000      | 0.5000       | 0.5000        | 0.02250 (15)                     |
| N1  | 0.6124 (3)  | 0.52515 (14) | 0.36355 (12)  | 0.0330 (4)                       |
| N2  | 0.6934 (3)  | 0.62227 (14) | 0.24675 (11)  | 0.0351 (4)                       |

|    |            |              |              |            |
|----|------------|--------------|--------------|------------|
| H2 | 0.7431     | 0.6738       | 0.2183       | 0.042*     |
| N3 | 0.2911 (2) | 0.63150 (13) | 0.44833 (12) | 0.0317 (4) |
| N4 | 0.1335 (2) | 0.75759 (14) | 0.35583 (12) | 0.0350 (4) |
| H4 | 0.0817     | 0.7917       | 0.3047       | 0.042*     |
| O1 | 0.3183 (2) | 0.37154 (11) | 0.42634 (10) | 0.0378 (4) |
| O2 | 0.1041 (2) | 0.30061 (13) | 0.31300 (11) | 0.0461 (4) |

*Atomic displacement parameters (Å<sup>2</sup>)*

|     | $U^{11}$    | $U^{22}$    | $U^{33}$    | $U^{12}$     | $U^{13}$      | $U^{23}$      |
|-----|-------------|-------------|-------------|--------------|---------------|---------------|
| C1  | 0.0449 (12) | 0.0407 (11) | 0.0220 (10) | -0.0042 (10) | 0.0024 (9)    | -0.0056 (8)   |
| C2  | 0.0326 (10) | 0.0325 (10) | 0.0223 (10) | 0.0011 (8)   | 0.0050 (8)    | -0.0028 (8)   |
| C3  | 0.0420 (12) | 0.0318 (10) | 0.0222 (10) | -0.0031 (9)  | 0.0068 (9)    | -0.0030 (8)   |
| C4  | 0.0282 (10) | 0.0307 (9)  | 0.0206 (9)  | 0.0025 (8)   | 0.0048 (8)    | -0.0009 (7)   |
| C5  | 0.0344 (11) | 0.0270 (9)  | 0.0245 (10) | -0.0020 (8)  | 0.0035 (8)    | -0.0031 (7)   |
| C6  | 0.0363 (11) | 0.0309 (10) | 0.0225 (9)  | -0.0007 (8)  | 0.0061 (8)    | 0.0037 (7)    |
| C7  | 0.0481 (13) | 0.0319 (11) | 0.0323 (11) | 0.0115 (10)  | -0.0014 (9)   | -0.0050 (9)   |
| C8  | 0.0278 (10) | 0.0256 (9)  | 0.0326 (10) | 0.0020 (8)   | 0.0016 (8)    | -0.0003 (8)   |
| C9  | 0.0405 (11) | 0.0295 (10) | 0.0261 (10) | 0.0054 (9)   | 0.0037 (8)    | 0.0000 (8)    |
| C10 | 0.0247 (9)  | 0.0247 (9)  | 0.0367 (11) | 0.0029 (7)   | 0.0031 (8)    | 0.0002 (8)    |
| C11 | 0.0402 (12) | 0.0338 (10) | 0.0305 (10) | 0.0067 (9)   | 0.0044 (9)    | -0.0008 (8)   |
| C12 | 0.0394 (12) | 0.0306 (10) | 0.0346 (11) | 0.0096 (9)   | 0.0024 (9)    | 0.0069 (8)    |
| C13 | 0.0388 (12) | 0.0284 (10) | 0.0331 (11) | 0.0017 (9)   | 0.0029 (9)    | -0.0045 (8)   |
| Mn1 | 0.0303 (3)  | 0.0201 (2)  | 0.0153 (2)  | 0.00383 (15) | -0.00031 (16) | -0.00102 (13) |
| N1  | 0.0423 (10) | 0.0362 (9)  | 0.0204 (8)  | -0.0006 (8)  | 0.0059 (7)    | -0.0017 (7)   |
| N2  | 0.0465 (10) | 0.0377 (9)  | 0.0210 (8)  | -0.0095 (8)  | 0.0056 (7)    | -0.0013 (7)   |
| N3  | 0.0395 (10) | 0.0266 (8)  | 0.0267 (8)  | 0.0088 (7)   | 0.0000 (7)    | -0.0006 (6)   |
| N4  | 0.0411 (10) | 0.0305 (9)  | 0.0285 (9)  | 0.0102 (7)   | -0.0062 (7)   | 0.0025 (7)    |
| O1  | 0.0427 (9)  | 0.0303 (8)  | 0.0348 (8)  | -0.0038 (6)  | -0.0075 (7)   | -0.0042 (6)   |
| O2  | 0.0523 (10) | 0.0427 (9)  | 0.0351 (9)  | -0.0002 (7)  | -0.0131 (7)   | -0.0127 (7)   |

*Geometric parameters (Å, °)*

|                    |           |                       |             |
|--------------------|-----------|-----------------------|-------------|
| C1—N1              | 1.312 (3) | C9—N3                 | 1.369 (2)   |
| C1—N2              | 1.343 (3) | C9—H9                 | 0.9300      |
| C1—H1              | 0.9300    | C10—C12 <sup>ii</sup> | 1.388 (3)   |
| C2—C3              | 1.364 (3) | C10—C11               | 1.389 (3)   |
| C2—N2              | 1.375 (3) | C11—C12               | 1.382 (3)   |
| C2—C4              | 1.462 (3) | C11—H11               | 0.9300      |
| C3—N1              | 1.379 (3) | C12—C10 <sup>ii</sup> | 1.388 (3)   |
| C3—H3              | 0.9300    | C12—H12               | 0.9300      |
| C4—C6 <sup>i</sup> | 1.388 (3) | C13—O1                | 1.233 (2)   |
| C4—C5              | 1.391 (3) | C13—O2                | 1.238 (2)   |
| C5—C6              | 1.379 (3) | C13—H13               | 0.9300      |
| C5—H5              | 0.9300    | Mn1—O1                | 2.1848 (13) |
| C6—C4 <sup>i</sup> | 1.388 (3) | Mn1—O1 <sup>iii</sup> | 2.1848 (13) |
| C6—H6              | 0.9300    | Mn1—N3 <sup>iii</sup> | 2.2376 (16) |
| C7—N3              | 1.315 (3) | Mn1—N3                | 2.2376 (16) |



|                            |             |  |              |
|----------------------------|-------------|--|--------------|
| C7—N4                      | 1.338 (2)   | Mn1—N1                                   | 2.2597 (17)  |
| C7—H7                      | 0.9300      | Mn1—N1 <sup>iii</sup>                    | 2.2597 (17)  |
| C8—C9                      | 1.362 (3)   | N2—H2                                    | 0.8600       |
| C8—N4                      | 1.373 (3)   | N4—H4                                    | 0.8600       |
| C8—C10                     | 1.464 (3)   |  |              |
| N1—C1—N2                   | 112.07 (18) | C11—C12—H12                              | 119.4        |
| N1—C1—H1                   | 124.0       | C10 <sup>ii</sup> —C12—H12               | 119.4        |
| N2—C1—H1                   | 124.0       | O1—C13—O2                                | 126.0 (2)    |
| C3—C2—N2                   | 104.84 (17) | O1—C13—H13                               | 117.0        |
| C3—C2—C4                   | 130.79 (19) | O2—C13—H13                               | 117.0        |
| N2—C2—C4                   | 124.36 (17) | O1—Mn1—O1 <sup>iii</sup>                 | 180.0        |
| C2—C3—N1                   | 110.64 (18) | O1—Mn1—N3 <sup>iii</sup>                 | 88.09 (6)    |
| C2—C3—H3                   | 124.7       | O1 <sup>iii</sup> —Mn1—N3 <sup>iii</sup> | 91.91 (6)    |
| N1—C3—H3                   | 124.7       | O1—Mn1—N3                                | 91.91 (6)    |
| C6 <sup>i</sup> —C4—C5     | 118.28 (17) | O1 <sup>iii</sup> —Mn1—N3                | 88.09 (6)    |
| C6 <sup>i</sup> —C4—C2     | 119.98 (17) | N3 <sup>iii</sup> —Mn1—N3                | 180.00 (8)   |
| C5—C4—C2                   | 121.74 (17) | O1—Mn1—N1                                | 88.47 (6)    |
| C6—C5—C4                   | 120.23 (18) | O1 <sup>iii</sup> —Mn1—N1                | 91.53 (6)    |
| C6—C5—H5                   | 119.9       | N3 <sup>iii</sup> —Mn1—N1                | 92.34 (6)    |
| C4—C5—H5                   | 119.9       | N3—Mn1—N1                                | 87.66 (6)    |
| C5—C6—C4 <sup>i</sup>      | 121.50 (17) | O1—Mn1—N1 <sup>iii</sup>                 | 91.53 (6)    |
| C5—C6—H6                   | 119.3       | O1 <sup>iii</sup> —Mn1—N1 <sup>iii</sup> | 88.47 (6)    |
| C4 <sup>i</sup> —C6—H6     | 119.3       | N3 <sup>iii</sup> —Mn1—N1 <sup>iii</sup> | 87.66 (6)    |
| N3—C7—N4                   | 111.81 (18) | N3—Mn1—N1 <sup>iii</sup>                 | 92.34 (6)    |
| N3—C7—H7                   | 124.1       | N1—Mn1—N1 <sup>iii</sup>                 | 180.0        |
| N4—C7—H7                   | 124.1       | C1—N1—C3                                 | 104.77 (17)  |
| C9—C8—N4                   | 104.81 (16) | C1—N1—Mn1                                | 126.06 (13)  |
| C9—C8—C10                  | 131.31 (18) | C3—N1—Mn1                                | 125.06 (14)  |
| N4—C8—C10                  | 123.55 (17) | C1—N2—C2                                 | 107.68 (16)  |
| C8—C9—N3                   | 110.71 (17) | C1—N2—H2                                 | 126.2        |
| C8—C9—H9                   | 124.6       | C2—N2—H2                                 | 126.2        |
| N3—C9—H9                   | 124.6       | C7—N3—C9                                 | 104.94 (16)  |
| C12 <sup>ii</sup> —C10—C11 | 118.30 (18) | C7—N3—Mn1                                | 128.10 (14)  |
| C12 <sup>ii</sup> —C10—C8  | 119.65 (17) | C9—N3—Mn1                                | 125.79 (13)  |
| C11—C10—C8                 | 121.96 (19) | C7—N4—C8                                 | 107.72 (17)  |
| C12—C11—C10                | 120.5 (2)   | C7—N4—H4                                 | 126.1        |
| C12—C11—H11                | 119.7       | C8—N4—H4                                 | 126.1        |
| C10—C11—H11                | 119.7       | C13—O1—Mn1                               | 135.75 (13)  |
| C11—C12—C10 <sup>ii</sup>  | 121.16 (18) |  |              |
| N2—C2—C3—N1                | 0.3 (2)     | O1 <sup>iii</sup> —Mn1—N1—C3             | -172.33 (16) |
| C4—C2—C3—N1                | -178.5 (2)  | N3 <sup>iii</sup> —Mn1—N1—C3             | 95.69 (16)   |
| C3—C2—C4—C6 <sup>i</sup>   | -12.5 (3)   | N3—Mn1—N1—C3                             | -84.31 (16)  |
| N2—C2—C4—C6 <sup>i</sup>   | 168.97 (19) | N1—C1—N2—C2                              | -0.1 (2)     |
| C3—C2—C4—C5                | 166.7 (2)   | C3—C2—N2—C1                              | -0.1 (2)     |
| N2—C2—C4—C5                | -11.9 (3)   | C4—C2—N2—C1                              | 178.79 (19)  |
| C6 <sup>i</sup> —C4—C5—C6  | 0.2 (3)     | N4—C7—N3—C9                              | 0.7 (2)      |

|                                |              |                               |              |
|--------------------------------|--------------|-------------------------------|--------------|
| C2—C4—C5—C6                    | -178.98 (18) | N4—C7—N3—Mn1                  | -167.33 (14) |
| C4—C5—C6—C4 <sup>i</sup>       | -0.2 (3)     | C8—C9—N3—C7                   | -0.9 (2)     |
| N4—C8—C9—N3                    | 0.8 (2)      | C8—C9—N3—Mn1                  | 167.49 (13)  |
| C10—C8—C9—N3                   | -172.7 (2)   | O1—Mn1—N3—C7                  | -63.64 (19)  |
| C9—C8—C10—C12 <sup>ii</sup>    | -7.5 (3)     | O1 <sup>iii</sup> —Mn1—N3—C7  | 116.36 (19)  |
| N4—C8—C10—C12 <sup>ii</sup>    | -179.89 (19) | N1—Mn1—N3—C7                  | 24.74 (18)   |
| C9—C8—C10—C11                  | 169.0 (2)    | N1 <sup>iii</sup> —Mn1—N3—C7  | -155.26 (18) |
| N4—C8—C10—C11                  | -3.4 (3)     | O1—Mn1—N3—C9                  | 130.62 (16)  |
| C12 <sup>ii</sup> —C10—C11—C12 | -0.2 (3)     | O1 <sup>iii</sup> —Mn1—N3—C9  | -49.38 (16)  |
| C8—C10—C11—C12                 | -176.81 (19) | N1—Mn1—N3—C9                  | -140.99 (17) |
| C10—C11—C12—C10 <sup>ii</sup>  | 0.3 (4)      | N1 <sup>iii</sup> —Mn1—N3—C9  | 39.01 (17)   |
| N2—C1—N1—C3                    | 0.3 (2)      | N3—C7—N4—C8                   | -0.3 (2)     |
| N2—C1—N1—Mn1                   | -157.68 (15) | C9—C8—N4—C7                   | -0.3 (2)     |
| C2—C3—N1—C1                    | -0.3 (2)     | C10—C8—N4—C7                  | 173.77 (19)  |
| C2—C3—N1—Mn1                   | 157.90 (14)  | O2—C13—O1—Mn1                 | 151.13 (17)  |
| O1—Mn1—N1—C1                   | 161.35 (18)  | N3 <sup>iii</sup> —Mn1—O1—C13 | 178.4 (2)    |
| O1 <sup>iii</sup> —Mn1—N1—C1   | -18.65 (18)  | N3—Mn1—O1—C13                 | -1.6 (2)     |
| N3 <sup>iii</sup> —Mn1—N1—C1   | -110.62 (18) | N1—Mn1—O1—C13                 | -89.2 (2)    |
| N3—Mn1—N1—C1                   | 69.38 (18)   | N1 <sup>iii</sup> —Mn1—O1—C13 | 90.8 (2)     |
| O1—Mn1—N1—C3                   | 7.67 (16)    |                               |              |

Symmetry codes: (i)  $-x+1, -y+1, -z$ ; (ii)  $-x, -y+2, -z+1$ ; (iii)  $-x+1, -y+1, -z+1$ .

*Hydrogen-bond geometry* ( $\text{\AA}$ ,  $^\circ$ )

| <i>D</i> —H $\cdots$ <i>A</i>   | <i>D</i> —H | H $\cdots$ <i>A</i> | <i>D</i> $\cdots$ <i>A</i> | <i>D</i> —H $\cdots$ <i>A</i> |
|---------------------------------|-------------|---------------------|----------------------------|-------------------------------|
| N2—H2 $\cdots$ O2 <sup>iv</sup> | 0.86        | 2.00                | 2.840 (2)                  | 165                           |
| N4—H4 $\cdots$ O2 <sup>v</sup>  | 0.86        | 1.95                | 2.736 (2)                  | 151                           |

Symmetry codes: (iv)  $-x+1, y+1/2, -z+1/2$ ; (v)  $-x, y+1/2, -z+1/2$ .