

Acta Crystallographica Section E

Structure Reports

Online

ISSN 1600-5368

Corrigenda

Haleden Chiririwa

Department of Chemistry, University of Cape Town, Private Bag, Rondebosch 7707,
South Africa

Correspondence e-mail: harrychiririwa@yahoo.com

Received 23 April 2012; accepted 23 April 2012

The affiliation of one of the authors and a source of funding are both added in the following papers: Chiririwa & Meijboom [*Acta Cryst.* (2011*a*), **E67**, m1496; *Acta Cryst.* (2011*b*), **E67**, m1497; *Acta Cryst.* (2011*c*), **E67**, m1498] and Chiririwa & Muller [*Acta Cryst.* (2012*a*), **E68**, m49; *Acta Cryst.* (2012*b*), **E68**, m116–m117].

Due to an oversight, an affiliation and a source of funding were omitted from five recent articles (Chiririwa & Meijboom, 2011*a,b,c*; Chiririwa & Muller, 2012*a,b*). The affiliation of the correspondence author, Haleden Chiririwa, in all five articles should be 'Department of Chemistry, University of Cape Town, Private Bag, Rondebosch 7707, South Africa', as above. The University of Cape Town is also acknowledged for the use of their instrument. The acknowledgments section of the five papers should be appended with 'This research was partially funded by Mintek and Project AuTEK'.

References

- Chiririwa, H. & Meijboom, R. (2011*a*). *Acta Cryst.* **E67**, m1496.
Chiririwa, H. & Meijboom, R. (2011*b*). *Acta Cryst.* **E67**, m1497.
Chiririwa, H. & Meijboom, R. (2011*c*). *Acta Cryst.* **E67**, m1498.
Chiririwa, H. & Muller, A. (2012*a*). *Acta Cryst.* **E68**, m49.
Chiririwa, H. & Muller, A. (2012*b*). *Acta Cryst.* **E68**, m116–m117.

Dichlorido[2-diphenylphosphanyl-N-(pyridin-3-ylmethyl)benzylideneamine- κ^2P,N]platinum(II)

Haleden Chiririwa* and Reinout Meijboom

Research Centre for Synthesis and Catalysis, Department of Chemistry, University of Johannesburg, PO Box 524 Auckland Park, Johannesburg 2006, South Africa
Correspondence e-mail: harrychiririwa@yahoo.com

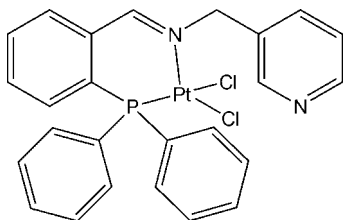
Received 22 September 2011; accepted 29 September 2011

Key indicators: single-crystal X-ray study; $T = 173$ K; mean $\sigma(\text{C}-\text{C}) = 0.008$ Å; R factor = 0.032; wR factor = 0.062; data-to-parameter ratio = 17.8.

The title compound, $[\text{PtCl}_2(\text{C}_{25}\text{H}_{21}\text{N}_2\text{P})]$, is a Pt^{II} complex with an NPCL_2 coordination sphere in which the metal is coordinated to the imino N and phosphane P atoms of the ligand and to two chloride ions. The Pt^{II} atom is in a distorted square-planar environment and is bound to the ligand *via* the P and amine N atoms in a *cis* fashion, with the chlorine atoms located at the two remaining sites.

Related literature

For related structures with related ligands, see: Chiririwa *et al.* (2011); Ghilardi *et al.* (1992); Sanchez *et al.* (1998, 2001). For Pt–N and Pt–P bond lengths in iminophosphane platinum(II) complexes, see: Ankersmit *et al.* (1996).



Experimental

Crystal data

$[\text{PtCl}_2(\text{C}_{25}\text{H}_{21}\text{N}_2\text{P})]$
 $M_r = 646.40$
Triclinic, $P\bar{1}$

$a = 9.9684$ (14) Å
 $b = 10.4129$ (15) Å
 $c = 12.526$ (3) Å

$\alpha = 97.687$ (5)°
 $\beta = 98.363$ (5)°
 $\gamma = 114.499$ (3)°
 $V = 1143.1$ (4) Å³
 $Z = 2$

Mo $K\alpha$ radiation
 $\mu = 6.46$ mm⁻¹
 $T = 173$ K
 $0.07 \times 0.06 \times 0.04$ mm

Data collection

Bruker Kappa DUO APEXII diffractometer
Absorption correction: multi-scan (SADABS; Bruker, 2007)
 $T_{\text{min}} = 0.671$, $T_{\text{max}} = 0.802$

16090 measured reflections
4994 independent reflections
4177 reflections with $I > 2\sigma(I)$
 $R_{\text{int}} = 0.058$

Refinement

$R[F^2 > 2\sigma(F^2)] = 0.032$
 $wR(F^2) = 0.062$
 $S = 1.01$
4994 reflections

280 parameters
H-atom parameters constrained
 $\Delta\rho_{\text{max}} = 0.87$ e Å⁻³
 $\Delta\rho_{\text{min}} = -1.02$ e Å⁻³

Table 1

Selected bond lengths (Å).

Pt1–N1	2.040 (4)	Pt1–Cl2	2.2840 (12)
Pt1–P1	2.1999 (13)	Pt1–Cl1	2.3806 (14)

Data collection: *APEX2* (Bruker, 2007); cell refinement: *SAINT* (Bruker, 2007); data reduction: *SAINT*; program(s) used to solve structure: *SHELXS97* (Sheldrick, 2008); program(s) used to refine structure: *SHELXL97* (Sheldrick, 2008); molecular graphics: *X-SEED* (Barbour, 2001); software used to prepare material for publication: *SHELXL97*.

Financial assistance from the South African National Research Foundation (SA NRF), the Research Fund of the University of Johannesburg and SASOL is gratefully acknowledged.

Supplementary data and figures for this paper are available from the IUCr electronic archives (Reference: GO2028).

References

- Ankersmit, H. A., Loken, B. H., Kooijman, H., Spek, A. L., Vrieze, K. & van Koten, G. (1996). *Inorg. Chim. Acta*, **252**, 141–155.
Barbour, L. J. (2001). *J. Supramol. Chem.* **1**, 189–191.
Bruker (2007). *APEX2*, *SADABS* and *SAINT*. Bruker AXS Inc., Madison, Wisconsin, USA.
Chiririwa, H., Meijboom, R. & Omondi, B. (2011). *Acta Cryst.* **E67**, m608–m609.
Ghilardi, C. A., Midollini, S., Moneti, S., Orlandini, A. & Scapacci, G. (1992). *J. Chem. Soc. Dalton Trans.* pp. 3371–3376.
Sanchez, G., Momblona, F., Perez, J. & Lopez, G. (2001). *Transition Met. Chem.* **26**, 100–104.
Sanchez, G., Serrano, J. L., Ruiz, F. & Lopez, G. (1998). *J. Fluorine Chem.* **91**, 165–169.
Sheldrick, G. M. (2008). *Acta Cryst.* **A64**, 112–122.

supporting information

Acta Cryst. (2011). E67, m1497 [doi:10.1107/S1600536811040086]

Dichlorido[2-diphenylphosphanyl-*N*-(pyridin-3-ylmethyl)benzylideneamine- κ^2P,N]platinum(II)

Haleden Chiririwa and Reinout Meijboom

S1. Comment

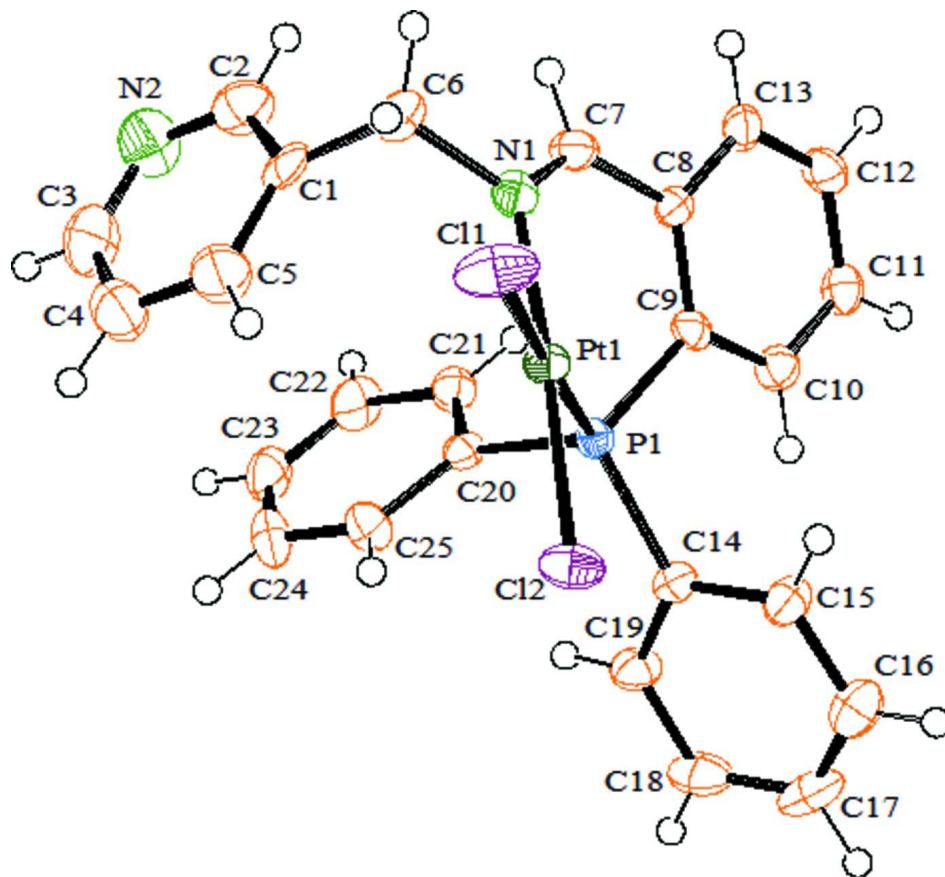
In recent years, platinum complexes with iminophosphane ligands of the *N*-[(2-diphenylphosphanyl)benzylidene]amine type have been used as catalysts (or catalyst precursors) in a variety of organic reactions. To the best of our knowledge, no structures have been determined so far, concerning the free ligand -(2-diphenylphosphanyl) benzylidene) (phenyl) methanamine, where the potentially bidentate ligand is chelated to the metal through the phosphorus and imino nitrogen atoms (Fig. 1). The platinum is in a square-planar environment and it is bound to the ligand using a κ^2P,N interaction in a *cis* fashion, with the chlorides located at the two remaining sites. However the square-planar geometry of the platinum environment is distorted with the angles being less than 180°, N(1)-Pt(1)-Cl(2) and P(1)-Pt(1)-Cl(1) of 176.70 (12)° and 178.20 (5)°, respectively. The average Pt-N and Pt-P bond lengths of 2.040 (4) and 2.1999 (13) Å, respectively are in the range expected for iminophosphane platinum(II) complexes, Ankersmit *et al.*, 1996. The torsion angle Pt-P-C(9)-C(8) = -36.5 (4)° indicates that the =CHC₆H₄- unit lies below the PtCl₂(P,N) plane. Selected bond lengths are given in Table 1.

S2. Experimental

To a dry CH₂Cl₂ (10 ml) solution of the precursor [Pt(COD)Cl₂] was added an equimolar amount of (2-diphenylphosphanyl) benzylidene) (phenyl)methanamine in CH₂Cl₂ (10 ml) solution, and the reaction was stirred at room temperature for 1 hr. The yellow solution was concentrated under reduced pressure to half volume and the addition of *ca* 10 ml hexane caused precipitation of the complex, which was filtered off, washed with Et₂O and dried under vacuum for 4 hrs. Yellow crystals used in the X-ray diffraction studies were grown by slow evaporation of a solution of the compound in a CH₂Cl₂-hexane solution at room temperature.

S3. Refinement

The methyl, methine and aromatic H atoms were placed in geometrically idealized positions and constrained to ride on their parent atoms, with C—H = 0.95 Å for aromatic, C—H = 0.99 Å for ⁱPr CH, C—H = 0.95 Å for CH and C—H = 0.98 for Me groups.

**Figure 1**

View of (I) (50% probability displacement ellipsoids).

Dichlorido[2-diphenylphosphanyl-*N*-(pyridin-3-ylmethyl)benzylideneamine- κ^2P,N]platinum(II)*Crystal data*[PtCl₂(C₂₅H₂₁N₂P)] $M_r = 646.40$ Triclinic, $P\bar{1}$

Hall symbol: -P 1

 $a = 9.9684$ (14) Å $b = 10.4129$ (15) Å $c = 12.526$ (3) Å $\alpha = 97.687$ (5)° $\beta = 98.363$ (5)° $\gamma = 114.499$ (3)° $V = 1143.1$ (4) Å³ $Z = 2$ $F(000) = 624$ $D_x = 1.878$ Mg m⁻³Mo $K\alpha$ radiation, $\lambda = 0.71073$ Å

Cell parameters from 16090 reflections

 $\theta = 2.2$ – 27.1 ° $\mu = 6.46$ mm⁻¹ $T = 173$ K

Block, colourless

 $0.07 \times 0.06 \times 0.04$ mm*Data collection*Bruker Kappa DUO APEXII
diffractometer

Radiation source: fine-focus sealed tube

Graphite monochromator

 $0.5^\circ \varphi$ scans and ω Absorption correction: multi-scan
(*SADABS*; Bruker, 2007) $T_{\min} = 0.671$, $T_{\max} = 0.802$

16090 measured reflections

4994 independent reflections

4177 reflections with $I > 2\sigma(I)$

$R_{\text{int}} = 0.058$
 $\theta_{\text{max}} = 27.1^\circ$, $\theta_{\text{min}} = 2.2^\circ$
 $h = -12 \rightarrow 7$

$k = -11 \rightarrow 13$
 $l = -16 \rightarrow 16$

Refinement

Refinement on F^2
 Least-squares matrix: full
 $R[F^2 > 2\sigma(F^2)] = 0.032$
 $wR(F^2) = 0.062$
 $S = 1.01$
 4994 reflections
 280 parameters
 0 restraints
 Primary atom site location: structure-invariant
 direct methods

Secondary atom site location: difference Fourier
 map
 Hydrogen site location: inferred from
 neighbouring sites
 H-atom parameters constrained
 $w = 1/[\sigma^2(F_o^2) + (0.0217P)^2]$
 where $P = (F_o^2 + 2F_c^2)/3$
 $(\Delta/\sigma)_{\text{max}} = 0.001$
 $\Delta\rho_{\text{max}} = 0.87 \text{ e } \text{\AA}^{-3}$
 $\Delta\rho_{\text{min}} = -1.02 \text{ e } \text{\AA}^{-3}$

Special details

Experimental. Half sphere of data collected using SAINT strategy (Bruker, 2006). Crystal to detector distance = 50mm; combination of φ and ω scans of 0.5° , 10s per $^\circ$, 2 iterations.

Geometry. All esds (except the esd in the dihedral angle between two l.s. planes) are estimated using the full covariance matrix. The cell esds are taken into account individually in the estimation of esds in distances, angles and torsion angles; correlations between esds in cell parameters are only used when they are defined by crystal symmetry. An approximate (isotropic) treatment of cell esds is used for estimating esds involving l.s. planes.

Refinement. Refinement of F^2 against ALL reflections. The weighted R-factor wR and goodness of fit S are based on F^2 , conventional R-factors R are based on F , with F set to zero for negative F^2 . The threshold expression of $F^2 > 2\sigma(F^2)$ is used only for calculating R-factors(gt) etc. and is not relevant to the choice of reflections for refinement. R-factors based on F^2 are statistically about twice as large as those based on F , and R-factors based on ALL data will be even larger.

Fractional atomic coordinates and isotropic or equivalent isotropic displacement parameters (\AA^2)

	x	y	z	$U_{\text{iso}}^*/U_{\text{eq}}$
Pt1	0.30212 (2)	0.26883 (2)	0.257890 (16)	0.02056 (6)
Cl1	0.43855 (18)	0.18884 (16)	0.38298 (11)	0.0407 (4)
Cl2	0.28642 (15)	0.09332 (13)	0.11921 (11)	0.0312 (3)
P1	0.18282 (14)	0.34845 (13)	0.14220 (10)	0.0191 (3)
N1	0.3050 (4)	0.4171 (4)	0.3836 (3)	0.0250 (9)
N2	-0.1190 (6)	0.2951 (6)	0.5265 (5)	0.0499 (14)
C1	0.1057 (6)	0.2892 (6)	0.4810 (4)	0.0285 (12)
C2	0.0286 (7)	0.3573 (6)	0.5293 (5)	0.0407 (15)
H2	0.0854	0.4555	0.5671	0.049*
C3	-0.1960 (7)	0.1592 (7)	0.4729 (5)	0.0488 (17)
H3	-0.3016	0.1133	0.4693	0.059*
C4	-0.1333 (7)	0.0797 (6)	0.4219 (5)	0.0499 (17)
H4	-0.1937	-0.0186	0.3854	0.060*
C5	0.0210 (7)	0.1468 (6)	0.4251 (5)	0.0445 (16)
H5	0.0675	0.0955	0.3893	0.053*
C6	0.2735 (6)	0.3698 (6)	0.4900 (4)	0.0289 (12)
H7A	0.3221	0.3067	0.5062	0.035*
H7B	0.3173	0.4557	0.5517	0.035*
C7	0.3209 (6)	0.5449 (5)	0.3819 (4)	0.0273 (12)
H7	0.3236	0.6003	0.4496	0.033*

C8	0.3357 (5)	0.6170 (5)	0.2876 (4)	0.0212 (11)
C9	0.2770 (5)	0.5450 (5)	0.1774 (4)	0.0212 (11)
C10	0.2852 (6)	0.6262 (5)	0.0963 (4)	0.0276 (12)
H10	0.2437	0.5783	0.0209	0.033*
C11	0.3523 (6)	0.7740 (5)	0.1242 (4)	0.0289 (12)
H11	0.3602	0.8277	0.0678	0.035*
C12	0.4088 (6)	0.8461 (5)	0.2341 (4)	0.0299 (12)
H12	0.4527	0.9487	0.2529	0.036*
C13	0.4012 (6)	0.7687 (5)	0.3156 (4)	0.0273 (12)
H13	0.4401	0.8178	0.3910	0.033*
C14	0.1730 (6)	0.3018 (5)	-0.0046 (4)	0.0214 (11)
C15	0.3084 (6)	0.3303 (5)	-0.0391 (4)	0.0290 (12)
H15	0.4012	0.3665	0.0138	0.035*
C16	0.3057 (7)	0.3050 (6)	-0.1516 (5)	0.0365 (14)
H16	0.3972	0.3256	-0.1755	0.044*
C17	0.1718 (7)	0.2506 (6)	-0.2277 (5)	0.0404 (15)
H17	0.1715	0.2347	-0.3042	0.049*
C18	0.0362 (7)	0.2182 (6)	-0.1947 (5)	0.0386 (14)
H18	-0.0570	0.1768	-0.2478	0.046*
C19	0.0400 (6)	0.2477 (5)	-0.0823 (4)	0.0289 (12)
H19	-0.0514	0.2300	-0.0590	0.035*
C20	-0.0091 (5)	0.2964 (5)	0.1564 (4)	0.0217 (11)
C21	-0.0639 (6)	0.3960 (5)	0.1868 (4)	0.0291 (12)
H21	0.0001	0.4968	0.2001	0.035*
C22	-0.2132 (6)	0.3464 (6)	0.1973 (5)	0.0371 (14)
H22	-0.2504	0.4143	0.2184	0.045*
C23	-0.3071 (6)	0.2025 (6)	0.1780 (5)	0.0387 (14)
H23	-0.4089	0.1711	0.1851	0.046*
C24	-0.2551 (6)	0.1018 (6)	0.1481 (5)	0.0358 (14)
H24	-0.3214	0.0016	0.1340	0.043*
C25	-0.1056 (6)	0.1471 (5)	0.1384 (4)	0.0304 (12)
H25	-0.0689	0.0781	0.1199	0.036*

Atomic displacement parameters (Å²)

	U^{11}	U^{22}	U^{33}	U^{12}	U^{13}	U^{23}
Pt1	0.02045 (11)	0.02191 (10)	0.01956 (11)	0.01090 (8)	0.00208 (8)	0.00264 (7)
C11	0.0548 (10)	0.0505 (9)	0.0257 (7)	0.0386 (8)	-0.0057 (7)	0.0005 (7)
C12	0.0376 (8)	0.0252 (6)	0.0298 (7)	0.0181 (6)	-0.0007 (6)	-0.0025 (6)
P1	0.0175 (7)	0.0197 (6)	0.0200 (7)	0.0081 (5)	0.0040 (6)	0.0044 (5)
N1	0.020 (2)	0.029 (2)	0.025 (2)	0.011 (2)	0.002 (2)	0.0067 (19)
N2	0.044 (3)	0.048 (3)	0.064 (4)	0.025 (3)	0.020 (3)	0.010 (3)
C1	0.043 (3)	0.033 (3)	0.015 (3)	0.020 (3)	0.010 (3)	0.014 (2)
C2	0.054 (4)	0.038 (3)	0.037 (3)	0.027 (3)	0.012 (3)	0.006 (3)
C3	0.036 (4)	0.062 (4)	0.057 (4)	0.025 (3)	0.021 (3)	0.021 (4)
C4	0.049 (4)	0.036 (3)	0.057 (4)	0.010 (3)	0.021 (4)	0.004 (3)
C5	0.048 (4)	0.037 (3)	0.049 (4)	0.018 (3)	0.020 (3)	0.001 (3)
C6	0.033 (3)	0.036 (3)	0.024 (3)	0.019 (3)	0.009 (3)	0.011 (2)

C7	0.027 (3)	0.026 (3)	0.024 (3)	0.010 (2)	0.004 (2)	-0.001 (2)
C8	0.014 (3)	0.029 (3)	0.019 (3)	0.010 (2)	0.003 (2)	0.005 (2)
C9	0.014 (3)	0.022 (2)	0.025 (3)	0.007 (2)	0.003 (2)	0.001 (2)
C10	0.029 (3)	0.029 (3)	0.025 (3)	0.013 (2)	0.006 (2)	0.008 (2)
C11	0.027 (3)	0.030 (3)	0.032 (3)	0.013 (2)	0.008 (3)	0.015 (2)
C12	0.031 (3)	0.019 (3)	0.036 (3)	0.009 (2)	0.007 (3)	0.004 (2)
C13	0.030 (3)	0.021 (3)	0.030 (3)	0.008 (2)	0.014 (3)	0.005 (2)
C14	0.028 (3)	0.021 (2)	0.019 (3)	0.014 (2)	0.006 (2)	0.006 (2)
C15	0.029 (3)	0.037 (3)	0.024 (3)	0.016 (3)	0.009 (3)	0.008 (2)
C16	0.040 (4)	0.045 (3)	0.036 (3)	0.026 (3)	0.017 (3)	0.013 (3)
C17	0.068 (5)	0.046 (3)	0.020 (3)	0.036 (3)	0.013 (3)	0.006 (3)
C18	0.046 (4)	0.039 (3)	0.023 (3)	0.017 (3)	-0.008 (3)	-0.001 (3)
C19	0.025 (3)	0.037 (3)	0.022 (3)	0.014 (3)	-0.001 (2)	0.002 (2)
C20	0.023 (3)	0.025 (3)	0.016 (3)	0.011 (2)	0.003 (2)	0.004 (2)
C21	0.032 (3)	0.027 (3)	0.029 (3)	0.013 (2)	0.009 (3)	0.006 (2)
C22	0.025 (3)	0.052 (4)	0.041 (4)	0.023 (3)	0.013 (3)	0.007 (3)
C23	0.023 (3)	0.053 (4)	0.037 (4)	0.012 (3)	0.011 (3)	0.012 (3)
C24	0.026 (3)	0.033 (3)	0.045 (4)	0.007 (3)	0.011 (3)	0.018 (3)
C25	0.025 (3)	0.027 (3)	0.036 (3)	0.010 (2)	0.006 (3)	0.006 (2)

Geometric parameters (Å, °)

Pt1—N1	2.040 (4)	C10—H10	0.9500
Pt1—P1	2.1999 (13)	C11—C12	1.386 (7)
Pt1—Cl2	2.2840 (12)	C11—H11	0.9500
Pt1—Cl1	2.3806 (14)	C12—C13	1.375 (7)
P1—C20	1.803 (5)	C12—H12	0.9500
P1—C14	1.815 (5)	C13—H13	0.9500
P1—C9	1.819 (5)	C14—C19	1.372 (7)
N1—C7	1.276 (6)	C14—C15	1.404 (6)
N1—C6	1.512 (6)	C15—C16	1.392 (7)
N2—C3	1.318 (8)	C15—H15	0.9500
N2—C2	1.332 (7)	C16—C17	1.367 (8)
C1—C5	1.384 (7)	C16—H16	0.9500
C1—C2	1.390 (7)	C17—C18	1.391 (8)
C1—C6	1.507 (7)	C17—H17	0.9500
C2—H2	0.9500	C18—C19	1.392 (7)
C3—C4	1.374 (8)	C18—H18	0.9500
C3—H3	0.9500	C19—H19	0.9500
C4—C5	1.392 (8)	C20—C21	1.393 (6)
C4—H4	0.9500	C20—C25	1.414 (7)
C5—H5	0.9500	C21—C22	1.392 (7)
C6—H7A	0.9900	C21—H21	0.9500
C6—H7B	0.9900	C22—C23	1.362 (8)
C7—C8	1.475 (7)	C22—H22	0.9500
C7—H7	0.9500	C23—C24	1.383 (7)
C8—C9	1.390 (6)	C23—H23	0.9500
C8—C13	1.405 (6)	C24—C25	1.393 (7)

C9—C10	1.396 (7)	C24—H24	0.9500
C10—C11	1.369 (7)	C25—H25	0.9500
N1—Pt1—P1	88.47 (12)	C11—C10—H10	119.6
N1—Pt1—C12	176.70 (12)	C9—C10—H10	119.6
P1—Pt1—C12	91.76 (5)	C10—C11—C12	120.5 (5)
N1—Pt1—C11	91.27 (12)	C10—C11—H11	119.7
P1—Pt1—C11	178.20 (5)	C12—C11—H11	119.7
C12—Pt1—C11	88.60 (5)	C13—C12—C11	119.8 (5)
C20—P1—C14	106.2 (2)	C13—C12—H12	120.1
C20—P1—C9	106.1 (2)	C11—C12—H12	120.1
C14—P1—C9	104.7 (2)	C12—C13—C8	120.0 (5)
C20—P1—Pt1	111.62 (16)	C12—C13—H13	120.0
C14—P1—Pt1	119.12 (15)	C8—C13—H13	120.0
C9—P1—Pt1	108.20 (17)	C19—C14—C15	119.4 (5)
C7—N1—C6	114.4 (4)	C19—C14—P1	122.4 (4)
C7—N1—Pt1	127.8 (4)	C15—C14—P1	118.2 (4)
C6—N1—Pt1	117.6 (3)	C16—C15—C14	119.4 (5)
C3—N2—C2	116.7 (5)	C16—C15—H15	120.3
C5—C1—C2	116.9 (5)	C14—C15—H15	120.3
C5—C1—C6	122.7 (5)	C17—C16—C15	120.3 (5)
C2—C1—C6	120.4 (5)	C17—C16—H16	119.9
N2—C2—C1	124.8 (6)	C15—C16—H16	119.9
N2—C2—H2	117.6	C16—C17—C18	121.0 (5)
C1—C2—H2	117.6	C16—C17—H17	119.5
N2—C3—C4	124.2 (6)	C18—C17—H17	119.5
N2—C3—H3	117.9	C17—C18—C19	118.6 (5)
C4—C3—H3	117.9	C17—C18—H18	120.7
C3—C4—C5	118.3 (6)	C19—C18—H18	120.7
C3—C4—H4	120.8	C14—C19—C18	121.3 (5)
C5—C4—H4	120.8	C14—C19—H19	119.3
C1—C5—C4	119.1 (5)	C18—C19—H19	119.3
C1—C5—H5	120.4	C21—C20—C25	119.4 (5)
C4—C5—H5	120.4	C21—C20—P1	123.1 (4)
C1—C6—N1	110.5 (4)	C25—C20—P1	117.5 (3)
C1—C6—H7A	109.6	C22—C21—C20	119.4 (5)
N1—C6—H7A	109.6	C22—C21—H21	120.3
C1—C6—H7B	109.6	C20—C21—H21	120.3
N1—C6—H7B	109.6	C23—C22—C21	121.3 (5)
H7A—C6—H7B	108.1	C23—C22—H22	119.3
N1—C7—C8	127.9 (4)	C21—C22—H22	119.3
N1—C7—H7	116.1	C22—C23—C24	120.3 (5)
C8—C7—H7	116.1	C22—C23—H23	119.8
C9—C8—C13	120.0 (5)	C24—C23—H23	119.8
C9—C8—C7	124.4 (4)	C23—C24—C25	120.2 (5)
C13—C8—C7	115.3 (4)	C23—C24—H24	119.9
C8—C9—C10	118.8 (4)	C25—C24—H24	119.9
C8—C9—P1	119.8 (4)	C24—C25—C20	119.5 (4)

C10—C9—P1	121.4 (4)	C24—C25—H25	120.3
C11—C10—C9	120.8 (5)	C20—C25—H25	120.3
N1—Pt1—P1—C20	-71.2 (2)	C8—C9—C10—C11	1.2 (7)
Cl2—Pt1—P1—C20	105.47 (17)	P1—C9—C10—C11	178.0 (4)
N1—Pt1—P1—C14	164.4 (2)	C9—C10—C11—C12	-2.3 (8)
Cl2—Pt1—P1—C14	-18.93 (19)	C10—C11—C12—C13	1.8 (8)
N1—Pt1—P1—C9	45.12 (19)	C11—C12—C13—C8	-0.2 (7)
Cl2—Pt1—P1—C9	-138.17 (16)	C9—C8—C13—C12	-0.8 (7)
P1—Pt1—N1—C7	-36.2 (4)	C7—C8—C13—C12	-174.6 (4)
Cl1—Pt1—N1—C7	142.0 (4)	C20—P1—C14—C19	4.1 (5)
P1—Pt1—N1—C6	138.9 (3)	C9—P1—C14—C19	-107.9 (4)
Cl1—Pt1—N1—C6	-42.8 (3)	Pt1—P1—C14—C19	131.1 (4)
C3—N2—C2—C1	-0.5 (9)	C20—P1—C14—C15	-179.6 (4)
C5—C1—C2—N2	0.8 (9)	C9—P1—C14—C15	68.4 (4)
C6—C1—C2—N2	-179.5 (5)	Pt1—P1—C14—C15	-52.6 (4)
C2—N2—C3—C4	0.7 (10)	C19—C14—C15—C16	0.9 (7)
N2—C3—C4—C5	-1.1 (10)	P1—C14—C15—C16	-175.6 (4)
C2—C1—C5—C4	-1.1 (8)	C14—C15—C16—C17	-1.1 (8)
C6—C1—C5—C4	179.2 (5)	C15—C16—C17—C18	-0.6 (8)
C3—C4—C5—C1	1.3 (9)	C16—C17—C18—C19	2.5 (8)
C5—C1—C6—N1	77.7 (6)	C15—C14—C19—C18	1.1 (7)
C2—C1—C6—N1	-102.0 (5)	P1—C14—C19—C18	177.4 (4)
C7—N1—C6—C1	93.8 (5)	C17—C18—C19—C14	-2.8 (8)
Pt1—N1—C6—C1	-82.0 (4)	C14—P1—C20—C21	-109.9 (4)
C6—N1—C7—C8	-172.7 (5)	C9—P1—C20—C21	1.2 (5)
Pt1—N1—C7—C8	2.5 (8)	Pt1—P1—C20—C21	118.8 (4)
N1—C7—C8—C9	26.9 (8)	C14—P1—C20—C25	71.8 (4)
N1—C7—C8—C13	-159.6 (5)	C9—P1—C20—C25	-177.1 (4)
C13—C8—C9—C10	0.3 (7)	Pt1—P1—C20—C25	-59.5 (4)
C7—C8—C9—C10	173.6 (4)	C25—C20—C21—C22	-0.9 (8)
C13—C8—C9—P1	-176.5 (3)	P1—C20—C21—C22	-179.1 (4)
C7—C8—C9—P1	-3.3 (6)	C20—C21—C22—C23	-0.4 (8)
C20—P1—C9—C8	83.4 (4)	C21—C22—C23—C24	0.5 (9)
C14—P1—C9—C8	-164.5 (4)	C22—C23—C24—C25	0.6 (9)
Pt1—P1—C9—C8	-36.5 (4)	C23—C24—C25—C20	-1.8 (8)
C20—P1—C9—C10	-93.4 (4)	C21—C20—C25—C24	1.9 (8)
C14—P1—C9—C10	18.7 (4)	P1—C20—C25—C24	-179.7 (4)
Pt1—P1—C9—C10	146.7 (4)		
