

Acta Crystallographica Section E

Structure Reports

Online

ISSN 1600-5368

Chlorido[1-phenyl-3-(2,3,5,6-tetra-methylbenzyl)benzimidazol-2-ylidene]-silver(I)

Mehmet Akkurt,^{a*} Senem Akkoç,^b Yetkin Gök,^c Yılmaz Dağdemir^a and Muhammad Nawaz Tahir^d

^aDepartment of Physics, Faculty of Sciences, Erciyes University, 38039 Kayseri, Turkey, ^bDepartment of Chemistry, Faculty of Sciences, Erciyes University, 38039 Kayseri, Turkey, ^cDepartment of Chemistry, Faculty of Arts and Sciences, İnönü University, 44280 Malatya, Turkey, and ^dDepartment of Physics, University of Sargodha, Sargodha, Pakistan

Correspondence e-mail: akkurt@erciyes.edu.tr

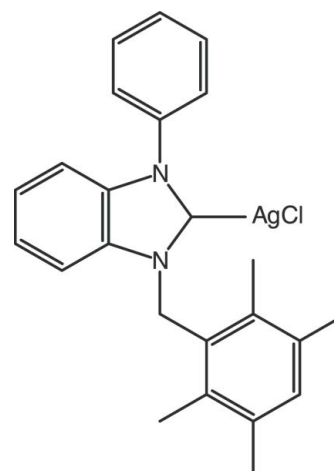
Received 23 March 2012; accepted 24 March 2012

Key indicators: single-crystal X-ray study; $T = 296$ K; mean $\sigma(\text{C}-\text{C}) = 0.005$ Å; R factor = 0.036; wR factor = 0.080; data-to-parameter ratio = 20.6.

In the title compound, $[\text{AgCl}(\text{C}_{24}\text{H}_{24}\text{N}_2)]$, the terminal phenyl and tetramethylbenzene rings [which form a dihedral angle of 87.92 (14)°] make dihedral angles of 59.59 (11) and 83.19 (12)° with respect to the central benzimidazole ring system. The Ag—C and Ag—Cl single-bond lengths are 2.087 (3) and 2.3267 (9) Å. The C—Ag—Cl bond angle is 172.84 (7)°. C—H... π interactions contribute to the stabilization of the crystal structure. A very weak π — π stacking interaction between adjacent tetramethylbenzene rings [centroid—centroid distance = 4.0610 (18) Å] is also observed.

Related literature

For the synthesis, see: Yigit *et al.* (2012); Özdemir *et al.* (2010c). For applications of silver *N*-heterocyclic carbene complexes in synthesis, catalysis, nanomaterials, and biology, see: Arduengo *et al.* (1993); Guerret *et al.* (1997); Patil *et al.* (2011); Özdemir *et al.* (2010b); Liao *et al.* (2008). For related compounds, see: Patil *et al.* (2010); Zhou *et al.* (2008); Berding *et al.* (2009). For bond-length data, see: Özdemir *et al.* (2010a); Allen *et al.* (1987).



Experimental

Crystal data

$[\text{AgCl}(\text{C}_{24}\text{H}_{24}\text{N}_2)]$
 $M_r = 483.77$
 Monoclinic, $P2_1/n$
 $a = 9.1439$ (2) Å
 $b = 18.7633$ (4) Å
 $c = 13.2710$ (3) Å
 $\beta = 109.899$ (1)°

$V = 2140.96$ (8) Å³
 $Z = 4$
 Mo $K\alpha$ radiation
 $\mu = 1.08$ mm⁻¹
 $T = 296$ K
 $0.35 \times 0.22 \times 0.20$ mm

Data collection

Bruker Kappa APEXII CCD diffractometer
 Absorption correction: multi-scan (SADABS; Bruker, 2005)
 $T_{\min} = 0.752$, $T_{\max} = 0.806$

19846 measured reflections
 5288 independent reflections
 3354 reflections with $I > 2\sigma(I)$
 $R_{\text{int}} = 0.040$

Refinement

$R[F^2 > 2\sigma(F^2)] = 0.036$
 $wR(F^2) = 0.080$
 $S = 1.01$
 5288 reflections

257 parameters
 H-atom parameters constrained
 $\Delta\rho_{\text{max}} = 0.38$ e Å⁻³
 $\Delta\rho_{\text{min}} = -0.38$ e Å⁻³

Table 1

Hydrogen-bond geometry (Å, °).

Cg2 and Cg3 are the centroids of the C1—C6 benzene and C8—C13 phenyl rings, respectively.

<i>D</i> —H... <i>A</i>	<i>D</i> —H	H... <i>A</i>	<i>D</i> ... <i>A</i>	<i>D</i> —H... <i>A</i>
C9—H9...Cg2 ⁱ	0.93	2.69	3.507 (4)	147
C22—H22A...Cg3 ⁱⁱ	0.96	2.80	3.525 (4)	133

Symmetry codes: (i) $-x, -y + 2, -z$; (ii) $x + \frac{1}{2}, -y + \frac{3}{2}, z + \frac{1}{2}$.

Data collection: APEX2 (Bruker, 2009); cell refinement: SAINT (Bruker, 2009); data reduction: SAINT; program(s) used to solve structure: SHELXS97 (Sheldrick, 2008); program(s) used to refine structure: SHELXL97 (Sheldrick, 2008); molecular graphics: ORTEP-3 for Windows (Farrugia, 1997) and PLATON (Spek, 2009); software used to prepare material for publication: WinGX (Farrugia, 1999) and PLATON.

The authors acknowledge the provision of funds for the purchase of a diffractometer and encouragement by Dr Muhammad Akram Chaudhary, Vice Chancellor, University

of Sargodha, Pakistan. We also thank the İnönü University research fund (BAP 2011/35) for financial support.

Supplementary data and figures for this paper are available from the IUCr electronic archives (Reference: SJ5223).

References

- Allen, F. H., Kennard, O., Watson, D. G., Brammer, L., Orpen, A. G. & Taylor, R. (1987). *J. Chem. Soc. Perkin Trans. 2*, pp. S1–19.
- Arduengo, A. J. III, Dias, H. V. R., Calabrese, J. C. & Davidson, F. (1993). *Organometallics*, **12**, 3405–3409.
- Berding, J., Kooijman, H., Spek, A. L. & Bouwman, E. (2009). *J. Organomet. Chem.* **694**, 2217–2221.
- Bruker (2005). *SADABS*. Bruker AXS Inc., Madison, Wisconsin, USA.
- Bruker (2009). *APEX2* and *SAINT*. Bruker AXS Inc., Madison, Wisconsin, USA.
- Farrugia, L. J. (1997). *J. Appl. Cryst.* **30**, 565.
- Farrugia, L. J. (1999). *J. Appl. Cryst.* **32**, 837–838.
- Guerret, O., Sole, S., Gornitzka, H., Teichert, M., Trinquier, G. & Bertrand, G. (1997). *J. Am. Chem. Soc.* **119**, 6668–6669.
- Liao, C., Chan, K., Chiu, P., Chen, C. & Lee, H. M. (2008). *Inorg. Chim. Acta*, **361**, 2973–2978.
- Özdemir, İ., Demir, S., Günal, S., Özdemir, İ., Arıcı, C. & Ülkü, D. (2010a). *Inorg. Chim. Acta*, **363**, 3803–3808.
- Özdemir, İ., Gök, Y., Özeroglu, Ö., Kaloglu, M., Doucet, H. & Bruneau, C. (2010b). *Eur. J. Inorg. Chem.* **12**, 1798–1805.
- Özdemir, İ., Temelli, N., Günal, S. & Demir, S. (2010c). *Molecules*, **15**, 2203–2210.
- Patil, S., Deally, A., Gleeson, B., Hackenberg, F., Müller-Bunz, H., Paradisi, F. & Tacke, M. (2011). *Z. Anorg. Allg. Chem.* **637**, 386–396.
- Patil, S., Dietrich, K., Deally, A., Gleeson, B., Müller-Bunz, H., Paradisi, F. & Tacke, M. (2010). *Helv. Chim. Acta*, **93**, 2347–2363.
- Sheldrick, G. M. (2008). *Acta Cryst.* **A64**, 112–122.
- Spek, A. L. (2009). *Acta Cryst.* **D65**, 148–155.
- Yigit, B., Gök, Y., Özdemir, İ. & Günal, S. (2012). *J. Coord. Chem.* **3**, 371–379.
- Zhou, Y., Zhang, X., Chen, W. & Qiu, H. J. (2008). *J. Organomet. Chem.* **693**, 205–215.

supporting information

Acta Cryst. (2012). E68, m590–m591 [doi:10.1107/S1600536812012998]

Chlorido[1-phenyl-3-(2,3,5,6-tetramethylbenzyl)benzimidazol-2-ylidene]silver(I)

Mehmet Akkurt, Senem Akkoç, Yetkin Gök, Yılmaz Dağdemir and Muhammad Nawaz Tahir

S1. Comment

N-Heterocyclic carbene complexes (NHCs) have developed significantly in organometallic chemistry and homogenous catalysis since discovered, and have become extremely popular. Silver NHC complexes have particular interest because of their wide use as ligand transfer agents for the synthesis other metal-NHC complexes, catalysis, nanomaterials, and also biological activity as antimicrobial agents (Arduengo *et al.*, 1993; Guerret *et al.*, 1997; Patil *et al.*, 2011; Özdemir *et al.*, 2010b; Liao *et al.*, 2008; Patil *et al.*, 2010; Zhou *et al.*, 2008; Berding *et al.*, 2009).

In connection with our papers on the synthesis of the new complexes with *N*-heterocyclic carbene ligands, (Yigit *et al.*, 2012; Özdemir *et al.*, 2010c), we report here the crystal structure of the title compound, chlorido-[1-phenyl-3-(2,3,5,6-tetramethylbenzyl)benzimidazol-2-ylidene]silver (I).

In the title compound (I), (Fig. 1), the five- and six-membered rings (N1/N2/C1/C6/C7) and (C1–C6) of the benzimidazole groups are almost co-planar with maximum deviations of -0.012 (2) Å for N1 and 0.012 (3) Å for C6, respectively. The dihedral angle between them is 4.53 (16)°. The C8–C13 phenyl and C15–C20 benzene rings make dihedral angles of 59.59 (11)° and 83.19 (12)°, respectively, with respect to the mean plane of the central N1/N2/C1–C7 benzimidazole ring system, while they make a dihedral angle of 87.92 (14)° with each other. The Ag–C and Ag–Cl single bond lengths are 2.087 (3) Å and 2.3267 (9) Å. The C–Ag–Cl bond angle is 172.84 (7)°. The values of the geometrical parameters of (I) are in agreement with those reported for similar compounds (Allen *et al.*, 1987; Özdemir *et al.*, 2010a).

The crystal structure is stabilized by C–H... π interactions (Table 1) and weak π - π stacking interactions between adjacent (C15–C20: *Cg*4) benzene rings [*Cg*4...*Cg*4(1 - *x*, 2 - *y*, 1 - *z*) = 4.0610 (18) Å]. Fig. 2 shows the packing of (I) in the unit cell, viewed along the *a* axis.

S2. Experimental

For the originally reported synthesis, see: Yigit *et al.* (2012); Özdemir *et al.* (2010c). Single crystals of the title compound were obtained by recrystallization from dichloromethane/hexane at room temperature. (Yields: 0.281 g; 84%. M.p.: 524–525 K).

S3. Refinement

The H atoms were positioned geometrically with C–H = 0.93, C–H = 0.97 and C–H = 0.96 Å, for the aromatic, methylene and methyl H atoms, respectively and refined using a riding model with $U_{\text{iso}}(\text{H}) = xU_{\text{eq}}(\text{C})$, where $x = 1.5$ for the methyl H atoms and $x = 1.2$ for all other H atoms.

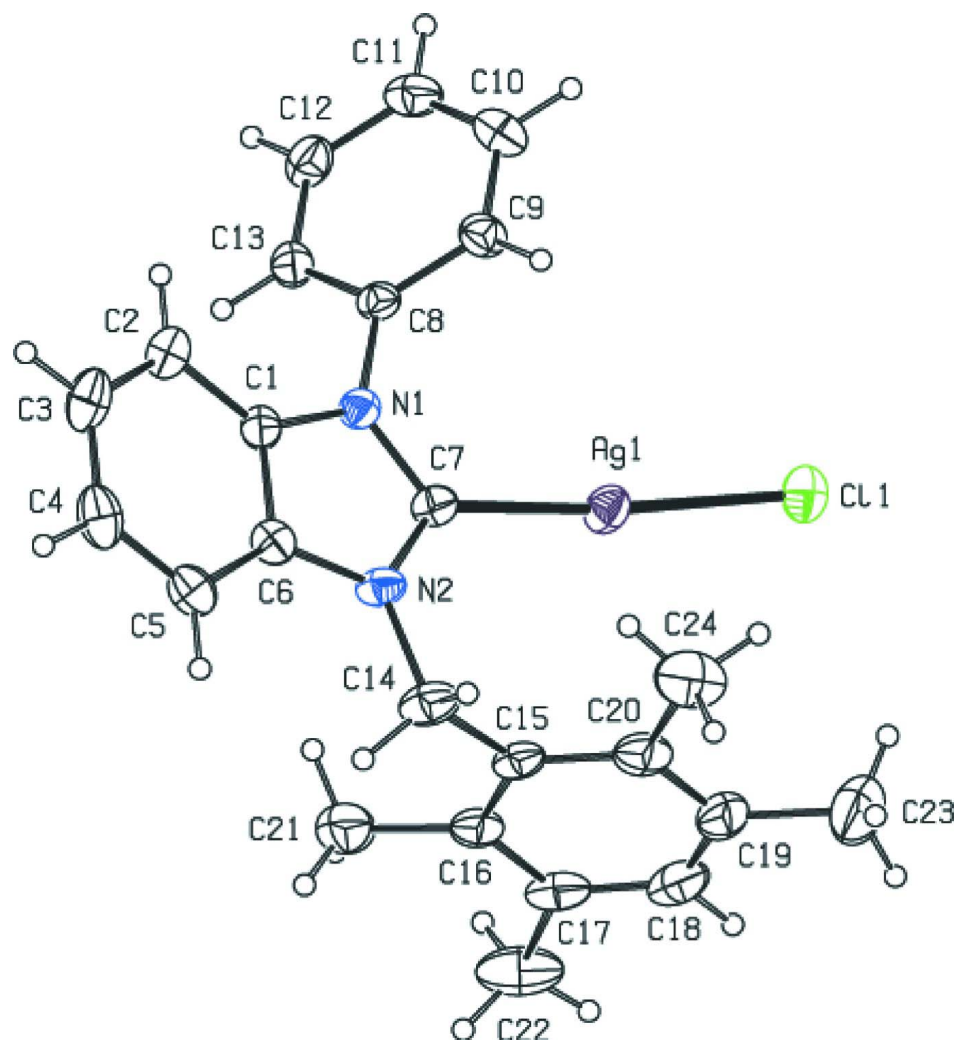


Figure 1

The title compound with the atom numbering scheme. Displacement ellipsoids for non-H atoms are drawn at the 30% probability level.

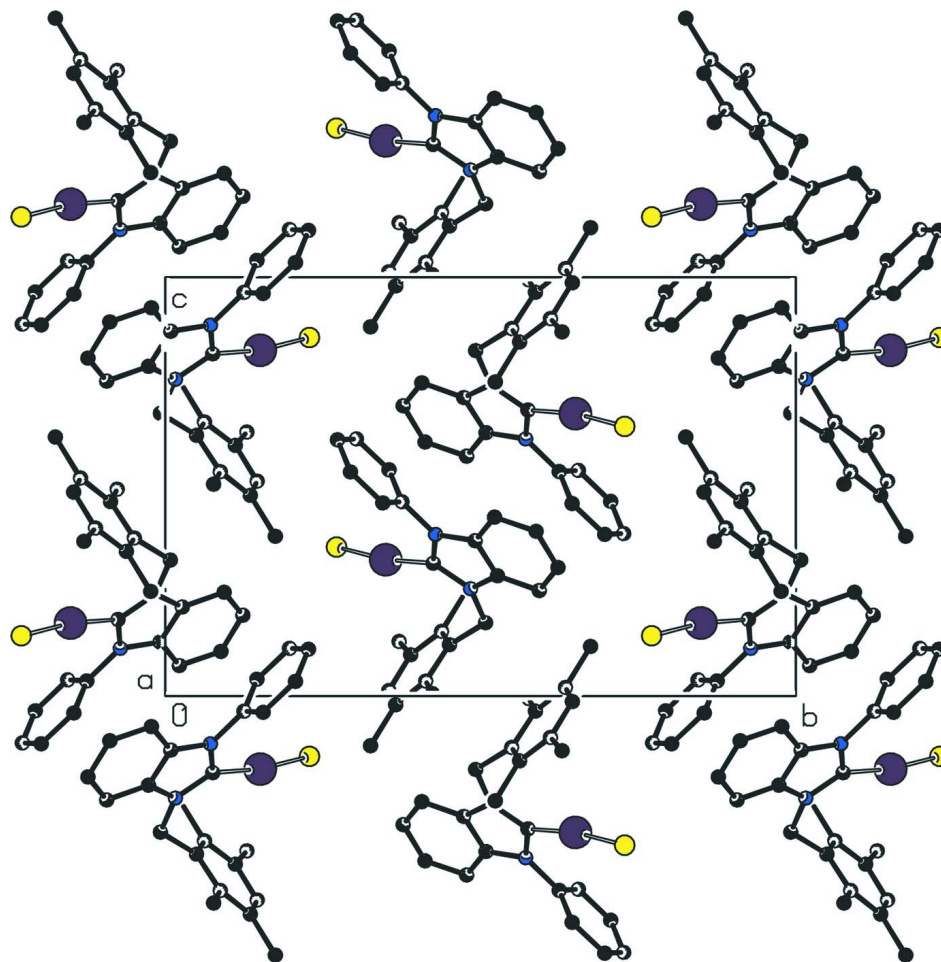


Figure 2

The packing of the title molecule in the unit cell, viewed along the *a* axis. H atoms are omitted for clarity.

Chlorido[1-phenyl-3-(2,3,5,6-tetramethylbenzyl)benzimidazol-2-ylidene]silver(I)

Crystal data

[AgCl(C₂₄H₂₄N₂)]

M_r = 483.77

Monoclinic, *P*2₁/*n*

Hall symbol: -*P* 2yn

a = 9.1439 (2) Å

b = 18.7633 (4) Å

c = 13.2710 (3) Å

β = 109.899 (1)°

V = 2140.96 (8) Å³

Z = 4

F(000) = 984

D_x = 1.501 Mg m⁻³

Mo *K*α radiation, λ = 0.71073 Å

Cell parameters from 3354 reflections

θ = 2.4–28.3°

μ = 1.08 mm⁻¹

T = 296 K

Prism, white

0.35 × 0.22 × 0.20 mm

Data collection

Bruker Kappa APEXII CCD
diffractometer

Radiation source: fine-focus sealed tube

Graphite monochromator

Detector resolution: 8.00 pixels mm⁻¹

ω scans

Absorption correction: multi-scan

(*SADABS*; Bruker, 2005)

T_{min} = 0.752, *T_{max}* = 0.806

19846 measured reflections

5288 independent reflections
 3354 reflections with $I > 2\sigma(I)$
 $R_{\text{int}} = 0.040$
 $\theta_{\text{max}} = 28.3^\circ$, $\theta_{\text{min}} = 2.4^\circ$

$h = -10 \rightarrow 12$
 $k = -25 \rightarrow 16$
 $l = -17 \rightarrow 17$

Refinement

Refinement on F^2
 Least-squares matrix: full
 $R[F^2 > 2\sigma(F^2)] = 0.036$
 $wR(F^2) = 0.080$
 $S = 1.01$
 5288 reflections
 257 parameters
 0 restraints
 Primary atom site location: structure-invariant
 direct methods

Secondary atom site location: difference Fourier
 map
 Hydrogen site location: inferred from
 neighbouring sites
 H-atom parameters constrained
 $w = 1/[\sigma^2(F_o^2) + (0.0308P)^2 + 0.160P]$
 where $P = (F_o^2 + 2F_c^2)/3$
 $(\Delta/\sigma)_{\text{max}} = 0.001$
 $\Delta\rho_{\text{max}} = 0.38 \text{ e } \text{\AA}^{-3}$
 $\Delta\rho_{\text{min}} = -0.38 \text{ e } \text{\AA}^{-3}$

Special details

Experimental. *M.p.*: 524–525 K. $n_{\text{(CN)}} = 1593.31 \text{ cm}^{-1}$. $^1\text{H NMR}$ (DMSO) δ : 2.11, 2.18 (s, 12H, $\text{NCH}_2\text{C}_6\text{H}(\text{CH}_3)_4\text{-2,3,5,6}$); 5.61 (s, 2H, $\text{NCH}_2\text{C}_6\text{H}(\text{CH}_3)_4\text{-2,3,5,6}$); 6.66–7.87 (m, 10H, Ar-H). $^{13}\text{C NMR}$ (DMSO) δ : 16.4, 20.8 ($\text{NCH}_2\text{C}_6\text{H}(\text{CH}_3)_4\text{-2,3,5,6}$); 55.2 ($\text{NCH}_2\text{C}_6\text{H}(\text{CH}_3)_4\text{-2,3,5,6}$); 112.5, 112.8, 124.9, 125.4, 126.8, 129.8, 130.4, 131.3, 132.7, 133.9, 134.6, 138.9 (Ar-C); the carbene carbon was not detected. Analysis calculated for $\text{C}_{24}\text{H}_{24}\text{N}_2\text{AgCl}$: C 59.58, H 5.00, N 5.79%. Found: C 59.56, H 5.01, N 5.78%.

Geometry. Bond distances, angles *etc.* have been calculated using the rounded fractional coordinates. All su's are estimated from the variances of the (full) variance-covariance matrix. The cell e.s.d.'s are taken into account in the estimation of distances, angles and torsion angles

Refinement. Refinement on F^2 for ALL reflections except those flagged by the user for potential systematic errors. Weighted R -factors wR and all goodnesses of fit S are based on F^2 , conventional R -factors R are based on F , with F set to zero for negative F^2 . The observed criterion of $F^2 > \sigma(F^2)$ is used only for calculating $-R$ -factor-obs *etc.* and is not relevant to the choice of reflections for refinement. R -factors based on F^2 are statistically about twice as large as those based on F , and R -factors based on ALL data will be even larger.

Fractional atomic coordinates and isotropic or equivalent isotropic displacement parameters (\AA^2)

	<i>x</i>	<i>y</i>	<i>z</i>	$U_{\text{iso}}^*/U_{\text{eq}}$
Ag1	0.25184 (3)	0.84953 (1)	0.17444 (2)	0.0476 (1)
Cl1	0.43000 (9)	0.77142 (4)	0.14398 (7)	0.0572 (3)
N1	-0.0611 (3)	0.92849 (11)	0.11403 (17)	0.0370 (7)
N2	0.1099 (3)	0.98412 (11)	0.24355 (18)	0.0419 (8)
C1	-0.1317 (3)	0.99141 (14)	0.1290 (2)	0.0383 (9)
C2	-0.2743 (3)	1.02215 (16)	0.0728 (3)	0.0516 (11)
C3	-0.3022 (4)	1.08812 (18)	0.1066 (3)	0.0633 (14)
C4	-0.1939 (4)	1.12282 (17)	0.1930 (3)	0.0600 (13)
C5	-0.0523 (4)	1.09315 (15)	0.2480 (2)	0.0490 (11)
C6	-0.0233 (3)	1.02675 (14)	0.2127 (2)	0.0400 (9)
C7	0.0885 (3)	0.92485 (14)	0.1829 (2)	0.0407 (9)
C8	-0.1372 (3)	0.87529 (14)	0.0361 (2)	0.0365 (8)
C9	-0.0741 (4)	0.85480 (15)	-0.0403 (2)	0.0458 (10)
C10	-0.1480 (4)	0.80302 (16)	-0.1139 (2)	0.0552 (11)
C11	-0.2846 (4)	0.77302 (16)	-0.1119 (2)	0.0552 (11)
C12	-0.3471 (4)	0.79363 (16)	-0.0351 (3)	0.0536 (11)
C13	-0.2733 (3)	0.84494 (14)	0.0388 (2)	0.0443 (10)

C14	0.2555 (4)	1.00783 (17)	0.3248 (2)	0.0575 (11)
C15	0.3702 (3)	0.95064 (15)	0.3774 (2)	0.0452 (10)
C16	0.3525 (4)	0.91300 (16)	0.4642 (2)	0.0480 (10)
C17	0.4668 (4)	0.86531 (16)	0.5207 (2)	0.0579 (11)
C18	0.5916 (4)	0.85445 (17)	0.4869 (3)	0.0675 (12)
C19	0.6107 (4)	0.8891 (2)	0.4013 (3)	0.0639 (11)
C20	0.4998 (4)	0.93808 (17)	0.3455 (2)	0.0556 (11)
C21	0.2094 (4)	0.9235 (2)	0.4940 (3)	0.0758 (14)
C22	0.4607 (5)	0.8255 (2)	0.6185 (3)	0.0917 (18)
C23	0.7508 (5)	0.8708 (3)	0.3695 (4)	0.115 (2)
C24	0.5189 (5)	0.9767 (2)	0.2499 (3)	0.0853 (17)
H2	-0.34700	0.99920	0.01520	0.0620*
H3	-0.39630	1.11050	0.07090	0.0760*
H4	-0.21850	1.16730	0.21380	0.0720*
H5	0.02020	1.11610	0.30560	0.0590*
H9	0.01720	0.87570	-0.04210	0.0550*
H10	-0.10550	0.78830	-0.16490	0.0660*
H11	-0.33500	0.73880	-0.16250	0.0660*
H12	-0.43850	0.77290	-0.03330	0.0640*
H13	-0.31510	0.85920	0.09040	0.0530*
H14A	0.22980	1.03330	0.38010	0.0690*
H14B	0.30560	1.04140	0.29150	0.0690*
H18	0.66720	0.82180	0.52420	0.0810*
H21A	0.22080	0.96590	0.53640	0.1140*
H21B	0.19590	0.88320	0.53450	0.1140*
H21C	0.12030	0.92820	0.43010	0.1140*
H22A	0.37210	0.79440	0.59830	0.1370*
H22B	0.45230	0.85900	0.67090	0.1370*
H22C	0.55390	0.79790	0.64840	0.1370*
H23A	0.71950	0.83940	0.30890	0.1730*
H23B	0.82820	0.84780	0.42840	0.1730*
H23C	0.79320	0.91370	0.35120	0.1730*
H24A	0.59720	1.01290	0.27490	0.1280*
H24B	0.42190	0.99840	0.20850	0.1280*
H24C	0.54970	0.94330	0.20620	0.1280*

Atomic displacement parameters (\AA^2)

	U^{11}	U^{22}	U^{33}	U^{12}	U^{13}	U^{23}
Ag1	0.0405 (1)	0.0420 (2)	0.0554 (2)	0.0047 (1)	0.0098 (1)	-0.0002 (1)
Cl1	0.0532 (5)	0.0540 (5)	0.0682 (5)	0.0093 (4)	0.0255 (4)	0.0036 (4)
N1	0.0355 (12)	0.0364 (13)	0.0371 (12)	0.0020 (11)	0.0096 (11)	-0.0018 (10)
N2	0.0431 (14)	0.0362 (14)	0.0375 (13)	-0.0034 (11)	0.0021 (11)	-0.0040 (11)
C1	0.0378 (15)	0.0395 (17)	0.0397 (16)	0.0031 (14)	0.0158 (14)	0.0020 (13)
C2	0.0395 (17)	0.055 (2)	0.060 (2)	0.0036 (15)	0.0164 (16)	0.0027 (16)
C3	0.048 (2)	0.053 (2)	0.090 (3)	0.0156 (17)	0.025 (2)	0.0087 (19)
C4	0.071 (2)	0.0398 (18)	0.083 (3)	0.0081 (19)	0.044 (2)	-0.0009 (18)
C5	0.062 (2)	0.0382 (18)	0.0521 (19)	-0.0015 (16)	0.0265 (18)	-0.0025 (14)

C6	0.0484 (17)	0.0342 (16)	0.0389 (16)	0.0035 (14)	0.0169 (14)	0.0053 (12)
C7	0.0400 (16)	0.0394 (17)	0.0381 (15)	-0.0002 (14)	0.0074 (14)	0.0011 (13)
C8	0.0363 (15)	0.0365 (15)	0.0317 (14)	0.0037 (13)	0.0051 (13)	0.0024 (12)
C9	0.0493 (17)	0.0513 (19)	0.0390 (15)	-0.0054 (15)	0.0179 (14)	-0.0013 (14)
C10	0.074 (2)	0.054 (2)	0.0415 (18)	-0.0010 (18)	0.0246 (18)	-0.0060 (15)
C11	0.063 (2)	0.0477 (19)	0.0437 (18)	-0.0020 (17)	0.0036 (17)	-0.0072 (15)
C12	0.0391 (17)	0.053 (2)	0.066 (2)	-0.0026 (15)	0.0143 (17)	-0.0038 (17)
C13	0.0399 (16)	0.0464 (18)	0.0474 (17)	0.0000 (15)	0.0161 (14)	-0.0064 (14)
C14	0.057 (2)	0.0458 (19)	0.0532 (19)	-0.0074 (17)	-0.0028 (16)	-0.0059 (15)
C15	0.0407 (17)	0.0428 (18)	0.0400 (16)	-0.0072 (14)	-0.0018 (14)	-0.0065 (14)
C16	0.0478 (18)	0.0485 (19)	0.0402 (17)	-0.0133 (15)	0.0054 (15)	-0.0108 (14)
C17	0.066 (2)	0.049 (2)	0.0400 (17)	-0.0114 (17)	-0.0063 (17)	-0.0023 (15)
C18	0.057 (2)	0.056 (2)	0.064 (2)	0.0075 (18)	-0.0126 (19)	-0.0112 (18)
C19	0.0424 (19)	0.074 (2)	0.066 (2)	-0.0081 (19)	0.0065 (18)	-0.022 (2)
C20	0.056 (2)	0.056 (2)	0.0476 (18)	-0.0213 (17)	0.0082 (17)	-0.0109 (16)
C21	0.064 (2)	0.100 (3)	0.061 (2)	-0.014 (2)	0.018 (2)	-0.015 (2)
C22	0.123 (4)	0.074 (3)	0.052 (2)	-0.023 (3)	-0.004 (2)	0.0150 (19)
C23	0.057 (3)	0.153 (5)	0.131 (4)	0.002 (3)	0.026 (3)	-0.044 (4)
C24	0.092 (3)	0.098 (3)	0.068 (3)	-0.037 (3)	0.030 (2)	-0.003 (2)

Geometric parameters (Å, °)

Ag1—C11	2.3267 (9)	C19—C20	1.382 (5)
Ag1—C7	2.087 (3)	C19—C23	1.518 (6)
N1—C1	1.392 (4)	C20—C24	1.522 (5)
N1—C7	1.364 (4)	C2—H2	0.9300
N1—C8	1.435 (3)	C3—H3	0.9300
N2—C6	1.397 (4)	C4—H4	0.9300
N2—C7	1.348 (3)	C5—H5	0.9300
N2—C14	1.468 (4)	C9—H9	0.9300
C1—C2	1.388 (4)	C10—H10	0.9300
C1—C6	1.381 (4)	C11—H11	0.9300
C2—C3	1.370 (5)	C12—H12	0.9300
C3—C4	1.395 (5)	C13—H13	0.9300
C4—C5	1.370 (5)	C14—H14A	0.9700
C5—C6	1.388 (4)	C14—H14B	0.9700
C8—C9	1.381 (4)	C18—H18	0.9300
C8—C13	1.380 (4)	C21—H21A	0.9600
C9—C10	1.380 (4)	C21—H21B	0.9600
C10—C11	1.379 (5)	C21—H21C	0.9600
C11—C12	1.383 (5)	C22—H22A	0.9600
C12—C13	1.376 (4)	C22—H22B	0.9600
C14—C15	1.497 (4)	C22—H22C	0.9600
C15—C16	1.407 (4)	C23—H23A	0.9600
C15—C20	1.407 (5)	C23—H23B	0.9600
C16—C17	1.386 (4)	C23—H23C	0.9600
C16—C21	1.503 (5)	C24—H24A	0.9600
C17—C18	1.376 (5)	C24—H24B	0.9600

C17—C22	1.515 (5)	C24—H24C	0.9600
C18—C19	1.371 (5)		
C11—Ag1—C7	172.84 (7)	C2—C3—H3	119.00
C1—N1—C7	110.8 (2)	C4—C3—H3	119.00
C1—N1—C8	123.9 (2)	C3—C4—H4	119.00
C7—N1—C8	125.3 (2)	C5—C4—H4	119.00
C6—N2—C7	111.3 (2)	C4—C5—H5	122.00
C6—N2—C14	121.6 (2)	C6—C5—H5	122.00
C7—N2—C14	126.9 (3)	C8—C9—H9	120.00
N1—C1—C2	132.2 (3)	C10—C9—H9	120.00
N1—C1—C6	106.3 (2)	C9—C10—H10	120.00
C2—C1—C6	121.2 (3)	C11—C10—H10	120.00
C1—C2—C3	116.4 (3)	C10—C11—H11	120.00
C2—C3—C4	122.1 (3)	C12—C11—H11	120.00
C3—C4—C5	121.8 (3)	C11—C12—H12	120.00
C4—C5—C6	116.1 (3)	C13—C12—H12	120.00
N2—C6—C1	106.0 (2)	C8—C13—H13	120.00
N2—C6—C5	131.5 (3)	C12—C13—H13	120.00
C1—C6—C5	122.4 (3)	N2—C14—H14A	108.00
Ag1—C7—N1	124.81 (18)	N2—C14—H14B	108.00
Ag1—C7—N2	129.1 (2)	C15—C14—H14A	108.00
N1—C7—N2	105.5 (2)	C15—C14—H14B	108.00
N1—C8—C9	120.1 (3)	H14A—C14—H14B	107.00
N1—C8—C13	119.2 (2)	C17—C18—H18	118.00
C9—C8—C13	120.7 (3)	C19—C18—H18	118.00
C8—C9—C10	119.3 (3)	C16—C21—H21A	109.00
C9—C10—C11	120.2 (3)	C16—C21—H21B	109.00
C10—C11—C12	120.3 (3)	C16—C21—H21C	109.00
C11—C12—C13	119.7 (3)	H21A—C21—H21B	110.00
C8—C13—C12	119.9 (3)	H21A—C21—H21C	109.00
N2—C14—C15	116.2 (2)	H21B—C21—H21C	110.00
C14—C15—C16	119.0 (3)	C17—C22—H22A	110.00
C14—C15—C20	120.5 (3)	C17—C22—H22B	109.00
C16—C15—C20	120.4 (3)	C17—C22—H22C	109.00
C15—C16—C17	119.4 (3)	H22A—C22—H22B	109.00
C15—C16—C21	120.2 (3)	H22A—C22—H22C	109.00
C17—C16—C21	120.4 (3)	H22B—C22—H22C	109.00
C16—C17—C18	118.4 (3)	C19—C23—H23A	109.00
C16—C17—C22	122.7 (3)	C19—C23—H23B	109.00
C18—C17—C22	118.9 (3)	C19—C23—H23C	109.00
C17—C18—C19	123.6 (3)	H23A—C23—H23B	109.00
C18—C19—C20	118.8 (3)	H23A—C23—H23C	110.00
C18—C19—C23	118.7 (4)	H23B—C23—H23C	109.00
C20—C19—C23	122.4 (4)	C20—C24—H24A	109.00
C15—C20—C19	119.3 (3)	C20—C24—H24B	109.00
C15—C20—C24	121.2 (3)	C20—C24—H24C	109.00
C19—C20—C24	119.5 (3)	H24A—C24—H24B	109.00

C1—C2—H2	122.00	H24A—C24—H24C	109.00
C3—C2—H2	122.00	H24B—C24—H24C	110.00
C7—N1—C1—C2	172.8 (3)	C4—C5—C6—C1	-1.7 (4)
C8—N1—C1—C2	-7.1 (5)	N1—C8—C9—C10	179.3 (2)
C7—N1—C1—C6	-2.1 (3)	C9—C8—C13—C12	0.1 (4)
C8—N1—C1—C6	178.0 (2)	C13—C8—C9—C10	-0.5 (4)
C1—N1—C7—Ag1	-169.48 (19)	N1—C8—C13—C12	-179.7 (3)
C8—N1—C7—Ag1	10.4 (4)	C8—C9—C10—C11	1.0 (4)
C1—N1—C7—N2	2.2 (3)	C9—C10—C11—C12	-1.1 (5)
C8—N1—C7—N2	-178.0 (2)	C10—C11—C12—C13	0.8 (5)
C7—N1—C8—C13	122.9 (3)	C11—C12—C13—C8	-0.3 (4)
C1—N1—C8—C9	123.0 (3)	N2—C14—C15—C16	-83.2 (3)
C7—N1—C8—C9	-56.9 (4)	N2—C14—C15—C20	101.2 (3)
C1—N1—C8—C13	-57.2 (4)	C14—C15—C16—C17	-173.2 (3)
C7—N2—C14—C15	-26.7 (4)	C14—C15—C16—C21	7.9 (4)
C6—N2—C7—N1	-1.4 (3)	C20—C15—C16—C17	2.4 (4)
C14—N2—C7—N1	-175.3 (3)	C20—C15—C16—C21	-176.5 (3)
C6—N2—C14—C15	160.1 (3)	C14—C15—C20—C19	174.6 (3)
C14—N2—C6—C1	174.4 (2)	C14—C15—C20—C24	-6.2 (4)
C7—N2—C6—C5	-176.4 (3)	C16—C15—C20—C19	-0.9 (4)
C14—N2—C6—C5	-2.2 (5)	C16—C15—C20—C24	178.3 (3)
C6—N2—C7—Ag1	169.7 (2)	C15—C16—C17—C18	-2.5 (4)
C14—N2—C7—Ag1	-4.1 (4)	C15—C16—C17—C22	176.8 (3)
C7—N2—C6—C1	0.2 (3)	C21—C16—C17—C18	176.4 (3)
N1—C1—C2—C3	-175.7 (3)	C21—C16—C17—C22	-4.3 (5)
N1—C1—C6—C5	178.1 (3)	C16—C17—C18—C19	1.1 (5)
C6—C1—C2—C3	-1.5 (5)	C22—C17—C18—C19	-178.2 (3)
C2—C1—C6—C5	2.5 (4)	C17—C18—C19—C20	0.4 (5)
C2—C1—C6—N2	-174.4 (3)	C17—C18—C19—C23	-178.0 (4)
N1—C1—C6—N2	1.1 (3)	C18—C19—C20—C15	-0.5 (5)
C1—C2—C3—C4	-0.2 (5)	C18—C19—C20—C24	-179.7 (3)
C2—C3—C4—C5	1.0 (6)	C23—C19—C20—C15	177.9 (3)
C3—C4—C5—C6	0.0 (5)	C23—C19—C20—C24	-1.3 (5)
C4—C5—C6—N2	174.4 (3)		

Hydrogen-bond geometry (\AA , $^\circ$)

Cg2 and Cg3 are the centroids of the C1—C6 benzene and C8—C13 phenyl rings, respectively.

$D-H\cdots A$	$D-H$	$H\cdots A$	$D\cdots A$	$D-H\cdots A$
C9—H9 \cdots Cg2 ⁱ	0.93	2.69	3.507 (4)	147
C22—H22A \cdots Cg3 ⁱⁱ	0.96	2.80	3.525 (4)	133

Symmetry codes: (i) $-x, -y+2, -z$; (ii) $x+1/2, -y+3/2, z+1/2$.