

Acta Crystallographica Section E

Structure Reports

Online

ISSN 1600-5368

2-Chloro-5-fluoro-6-methyl-*N*-*o*-tolylpyrimidin-4-amine

Yufei Jiang, Kong Wu, Dongmei Cui and Wei Zhou*

College of Pharmaceutical Science, Zhejiang University of Technology, Hangzhou 310032, People's Republic of China

Correspondence e-mail: zhouwei@zjut.edu.cn

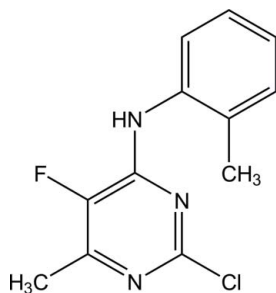
Received 12 March 2013; accepted 25 March 2013

Key indicators: single-crystal X-ray study; $T = 293$ K; mean $\sigma(\text{C}-\text{C}) = 0.003$ Å; R factor = 0.034; wR factor = 0.096; data-to-parameter ratio = 13.6.

In the title compound, $\text{C}_{12}\text{H}_{11}\text{ClFN}_3$, the benzene ring forms a dihedral angle of 72.43 (5)° with the pyrimidine ring. In the crystal, $\text{N}-\text{H}\cdots\text{N}$ hydrogen bonds link the molecules into a chain running along the c axis.

Related literature

For background to and applications of fluoro-pyrimidines, see: Riccaboni *et al.* (2010). For the antitumor activity of 4-aniline-substituted 5-fluoropyrimidines, see: Lawrence *et al.* (2012).



Experimental

Crystal data

 $\text{C}_{12}\text{H}_{11}\text{ClFN}_3$
 $M_r = 251.69$

 Monoclinic, $P2_1/c$
 $a = 12.0593$ (7) Å

 $b = 8.3684$ (4) Å
 $c = 12.8611$ (6) Å
 $\beta = 113.021$ (6)°
 $V = 1194.54$ (11) Å³
 $Z = 4$

 Mo $K\alpha$ radiation
 $\mu = 0.31$ mm⁻¹
 $T = 293$ K
 $0.5 \times 0.3 \times 0.2$ mm

Data collection

 Enraf–Nonius CAD-4
 diffractometer
 4692 measured reflections
 2125 independent reflections

 1750 reflections with $I > 2\sigma(I)$
 $R_{\text{int}} = 0.014$
 3 standard reflections every 60 min
 intensity decay: none

Refinement

 $R[F^2 > 2\sigma(F^2)] = 0.034$
 $wR(F^2) = 0.096$
 $S = 1.04$
 2125 reflections

 156 parameters
 H-atom parameters constrained
 $\Delta\rho_{\text{max}} = 0.17$ e Å⁻³
 $\Delta\rho_{\text{min}} = -0.21$ e Å⁻³

Table 1

Hydrogen-bond geometry (Å, °).

$D-H\cdots A$	$D-H$	$H\cdots A$	$D\cdots A$	$D-H\cdots A$
$\text{N1}-\text{H1}\cdots\text{N2}^i$	0.86	2.34	3.0768 (19)	145

Symmetry code: (i) $x, -y + \frac{1}{2}, z - \frac{1}{2}$.

Data collection: *CAD-4 Software* (Enraf–Nonius, 1994); cell refinement: *CAD-4 Software* (Enraf–Nonius, 1994); data reduction: *XCAD4* (Harms & Wocadlo, 1995); program(s) used to solve structure: *SHELXS97* (Sheldrick, 2008); program(s) used to refine structure: *SHELXL97* (Sheldrick, 2008); molecular graphics: *ORTEP-3 for Windows* (Farrugia, 2012); software used to prepare material for publication: *SHELXL97*.

We are acknowledge the support of Education Department Fund (Y201018689) of Zhejiang Province.

Supplementary data and figures for this paper are available from the IUCr electronic archives (Reference: IS5256).

References

- Enraf–Nonius (1994). *CAD4*. Enraf–Nonius, Delft, The Netherlands.
 Farrugia, L. J. (2012). *J. Appl. Cryst.* **45**, 849–854.
 Harms, K. & Wocadlo, S. (1995). *XCAD4*. University of Marburg, Germany.
 Lawrence, H. R., Martin, M. P., Luo, Y. & Pireddu, R. (2012). *J. Med. Chem.* **55**, 7392–7416.
 Riccaboni, M., Bianchi, I. & Petrillo, P. (2010). *Drug Discov. Today*, **15**, 517–530.
 Sheldrick, G. M. (2008). *Acta Cryst.* **A64**, 112–122.

supporting information

Acta Cryst. (2013). E69, o626 [https://doi.org/10.1107/S160053681300812X]

2-Chloro-5-fluoro-6-methyl-*N*-*o*-tolylpyrimidin-4-amine

Yufei Jiang, Kong Wu, Dongmei Cui and Wei Zhou

S1. Comment

The fluoro-containing pyrimidine skeleton was found in many biologically active molecules (Riccaboni *et al.*, 2010). Especially, the 4-anilines-substituted derivatives of 5-fluoropyrimidine were proved possessing obvious antitumor activity in recent years (Lawrence *et al.*, 2012). Owing to our interest in this area, we have prepared a series of 5-fluoropyrimidine derivatives substituted with anilines. In a continuation of our SAR investigations, we present here the crystal structure of the title compound, (1).

In (1) (Fig. 1), the atoms N1/H1 and C6 are co-planar well with the pyrimidine ring [r.m.s. 0.007 (1) Å], indicating a good conjugate system between the atom N1 and pyrimidine. The plane of *o*-toluidine moiety is torsional toward the pyrimidine ring, showing a dihedral angle of 72.43 (5)°. The amino group is involved in the formation of intermolecular N—H···N hydrogen bond (Table 1). In the crystal (Fig. 2), the intermolecular N—H···N hydrogen bonds link the molecules into one-dimensional chains running along the *c* axis.

S2. Experimental

In a tube-reactor was added a mixture of 2,4-dichloro-5-fluoro-6-methylpyrimidine (0.181 g, 1.0 mmol), *o*-toluidine (0.107 g, 1.0 mmol), KHCO₃ (0.1 g, 1.0 mmol) and 1.0 ml DMSO. The mixture was heated at 333 K until the TLC test showed that the reaction is complete. Then the mixture was diluted with 30 ml ethyl acetate, washed with 30 ml water for three times, dried with anhydrous sodium sulfate, and concentrated under reduced pressure. The crude product was purified by column chromatography (petroleum ether / ethyl acetate = 8/1) to give a white solid (0.238 g, yield 94.5%, m.p. 430–432 K). Since the crystal product was not found to be suitable for X-ray diffraction studies, a few solids were dissolved in ethyl acetate, which was allowed to evaporate slowly to give colourless crystals of (1) suitable for X-ray diffraction studies.

S3. Refinement

The amino H atom was found in a difference Fourier map and treated as riding with N—H = 0.86 Å, and with $U_{\text{iso}}(\text{H}) = 1.2U_{\text{eq}}(\text{N})$. The other H atoms were added at calculated positions and refined using a riding model, with C—H = 0.93 Å (or 0.96 Å for methyl H) and $U_{\text{iso}}(\text{H}) = 1.2U_{\text{eq}}(\text{C})$ or $1.5U_{\text{eq}}(\text{C}_{\text{methyl}})$.

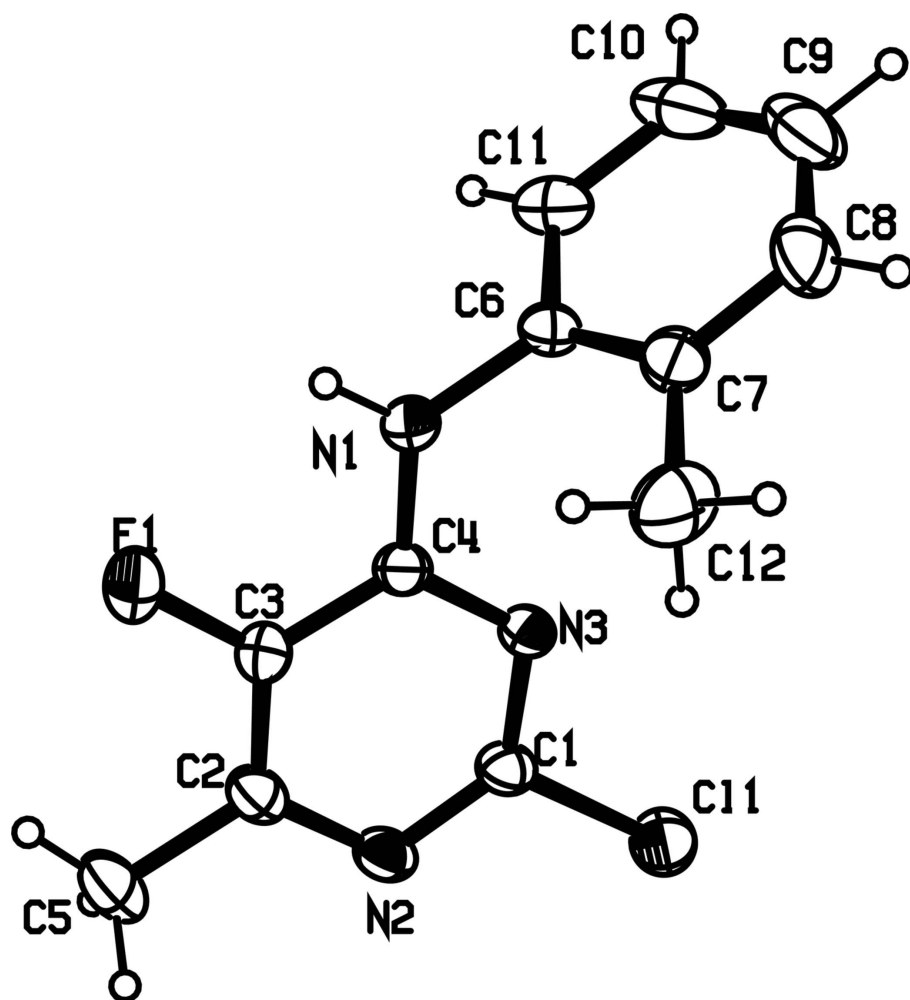


Figure 1

The molecular structure of the title compound with 30% probability displacement ellipsoids.

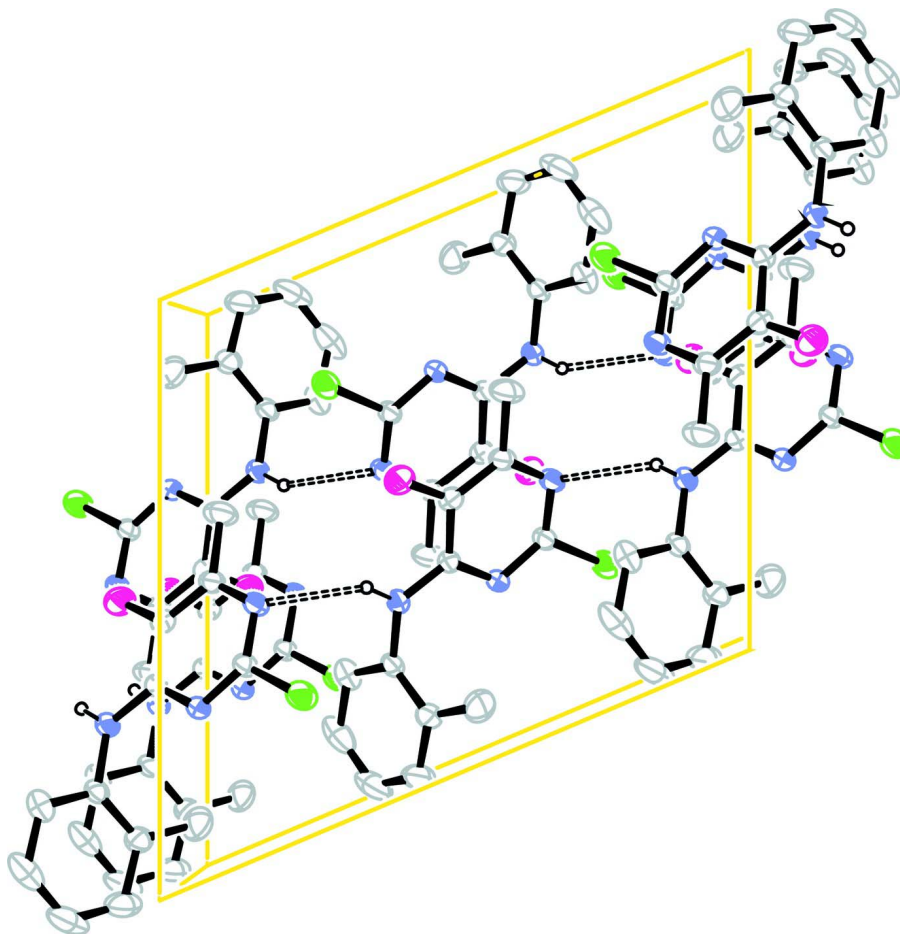


Figure 2

Packing diagram of the title compound, viewed normal to (010), showing hydrogen bonds (dashed lines). For clarity, H atoms not involved in the hydrogen bonds have been omitted.

2-Chloro-5-fluoro-6-methyl-*N*-*o*-tolylpyrimidin-4-amine

Crystal data

$C_{12}H_{11}ClFN_3$

$M_r = 251.69$

Monoclinic, $P2_1/c$

Hall symbol: -P 2ybc

$a = 12.0593$ (7) Å

$b = 8.3684$ (4) Å

$c = 12.8611$ (6) Å

$\beta = 113.021$ (6)°

$V = 1194.54$ (11) Å³

$Z = 4$

$F(000) = 520$

$D_x = 1.399$ Mg m⁻³

Mo $K\alpha$ radiation, $\lambda = 0.71073$ Å

Cell parameters from 1870 reflections

$\theta = 3.0$ – 29.1 °

$\mu = 0.31$ mm⁻¹

$T = 293$ K

Prismatic, colourless

$0.5 \times 0.3 \times 0.2$ mm

Data collection

Enraf–Nonius CAD-4
diffractometer

Radiation source: fine-focus sealed tube
Graphite monochromator

phi and ω scans

4692 measured reflections

2125 independent reflections

1750 reflections with $I > 2\sigma(I)$

$R_{\text{int}} = 0.014$
 $\theta_{\text{max}} = 25.1^\circ$, $\theta_{\text{min}} = 3.0^\circ$
 $h = -7 \rightarrow 14$
 $k = -9 \rightarrow 9$

$l = -15 \rightarrow 15$
 3 standard reflections every 60 min
 intensity decay: none

Refinement

Refinement on F^2
 Least-squares matrix: full
 $R[F^2 > 2\sigma(F^2)] = 0.034$
 $wR(F^2) = 0.096$
 $S = 1.04$
 2125 reflections
 156 parameters
 0 restraints
 Primary atom site location: structure-invariant
 direct methods

Secondary atom site location: difference Fourier
 map
 Hydrogen site location: inferred from
 neighbouring sites
 H-atom parameters constrained
 $w = 1/[\sigma^2(F_o^2) + (0.0466P)^2 + 0.2577P]$
 where $P = (F_o^2 + 2F_c^2)/3$
 $(\Delta/\sigma)_{\text{max}} = 0.002$
 $\Delta\rho_{\text{max}} = 0.17 \text{ e } \text{\AA}^{-3}$
 $\Delta\rho_{\text{min}} = -0.21 \text{ e } \text{\AA}^{-3}$

Special details

Geometry. All e.s.d.'s (except the e.s.d. in the dihedral angle between two l.s. planes) are estimated using the full covariance matrix. The cell e.s.d.'s are taken into account individually in the estimation of e.s.d.'s in distances, angles and torsion angles; correlations between e.s.d.'s in cell parameters are only used when they are defined by crystal symmetry. An approximate (isotropic) treatment of cell e.s.d.'s is used for estimating e.s.d.'s involving l.s. planes.

Refinement. Refinement of F^2 against ALL reflections. The weighted R -factor wR and goodness of fit S are based on F^2 , conventional R -factors R are based on F , with F set to zero for negative F^2 . The threshold expression of $F^2 > \sigma(F^2)$ is used only for calculating R -factors(gt) *etc.* and is not relevant to the choice of reflections for refinement. R -factors based on F^2 are statistically about twice as large as those based on F , and R -factors based on ALL data will be even larger.

Fractional atomic coordinates and isotropic or equivalent isotropic displacement parameters (\AA^2)

	x	y	z	$U_{\text{iso}}^*/U_{\text{eq}}$
C11	0.75856 (5)	-0.06428 (7)	1.24493 (4)	0.0666 (2)
N2	0.57335 (12)	0.12020 (18)	1.15433 (11)	0.0470 (4)
N3	0.70666 (11)	0.09036 (16)	1.05829 (11)	0.0407 (3)
F1	0.46632 (9)	0.35255 (15)	0.89928 (9)	0.0694 (3)
C1	0.66841 (15)	0.0648 (2)	1.14005 (14)	0.0426 (4)
C4	0.63837 (14)	0.1897 (2)	0.97700 (13)	0.0401 (4)
C3	0.53397 (14)	0.2537 (2)	0.98347 (14)	0.0448 (4)
N1	0.66996 (12)	0.22514 (18)	0.89014 (11)	0.0484 (4)
H1	0.6236	0.2882	0.8387	0.058*
C2	0.50232 (14)	0.2189 (2)	1.07122 (15)	0.0460 (4)
C6	0.77521 (15)	0.1655 (2)	0.87727 (13)	0.0445 (4)
C11	0.7589 (2)	0.0547 (2)	0.79274 (17)	0.0627 (5)
H11	0.6821	0.0171	0.7491	0.075*
C5	0.39149 (18)	0.2840 (3)	1.08108 (19)	0.0684 (6)
H5A	0.3501	0.3528	1.0180	0.103*
H5B	0.4136	0.3437	1.1500	0.103*
H5C	0.3395	0.1974	1.0816	0.103*
C10	0.8577 (3)	0.0005 (3)	0.7736 (2)	0.0862 (8)
H10	0.8482	-0.0745	0.7174	0.103*
C8	0.98515 (19)	0.1680 (4)	0.9222 (2)	0.0824 (8)
H8	1.0622	0.2052	0.9653	0.099*

C9	0.9696 (3)	0.0584 (4)	0.8384 (3)	0.0925 (9)
H9	1.0361	0.0229	0.8254	0.111*
C7	0.88790 (16)	0.2248 (2)	0.94391 (16)	0.0560 (5)
C12	0.9052 (2)	0.3424 (3)	1.03578 (19)	0.0804 (7)
H12A	0.8506	0.4302	1.0065	0.121*
H12B	0.9866	0.3812	1.0645	0.121*
H12C	0.8896	0.2916	1.0956	0.121*

Atomic displacement parameters (Å²)

	U^{11}	U^{22}	U^{33}	U^{12}	U^{13}	U^{23}
C11	0.0636 (3)	0.0849 (4)	0.0599 (3)	0.0128 (3)	0.0333 (3)	0.0278 (3)
N2	0.0441 (8)	0.0583 (9)	0.0462 (8)	-0.0052 (7)	0.0260 (7)	-0.0057 (7)
N3	0.0368 (7)	0.0512 (8)	0.0382 (7)	-0.0006 (6)	0.0192 (6)	0.0011 (6)
F1	0.0534 (6)	0.0882 (8)	0.0641 (7)	0.0227 (6)	0.0204 (5)	0.0185 (6)
C1	0.0413 (9)	0.0500 (10)	0.0411 (9)	-0.0061 (8)	0.0213 (7)	-0.0017 (7)
C4	0.0362 (8)	0.0502 (10)	0.0348 (8)	-0.0044 (7)	0.0150 (7)	-0.0043 (7)
C3	0.0371 (9)	0.0516 (10)	0.0426 (9)	0.0027 (8)	0.0122 (7)	-0.0005 (8)
N1	0.0428 (8)	0.0680 (10)	0.0374 (7)	0.0082 (7)	0.0188 (6)	0.0104 (7)
C2	0.0382 (9)	0.0524 (10)	0.0514 (10)	-0.0051 (8)	0.0221 (8)	-0.0125 (8)
C6	0.0463 (9)	0.0549 (10)	0.0391 (8)	0.0032 (8)	0.0240 (7)	0.0082 (8)
C11	0.0787 (14)	0.0675 (13)	0.0503 (11)	-0.0011 (11)	0.0344 (10)	0.0004 (9)
C5	0.0537 (11)	0.0799 (14)	0.0853 (15)	0.0077 (10)	0.0419 (11)	-0.0074 (12)
C10	0.133 (2)	0.0771 (16)	0.0817 (16)	0.0254 (17)	0.0782 (18)	0.0111 (13)
C8	0.0516 (12)	0.118 (2)	0.0884 (16)	0.0097 (13)	0.0386 (12)	0.0359 (16)
C9	0.095 (2)	0.110 (2)	0.109 (2)	0.0400 (17)	0.0793 (18)	0.0411 (18)
C7	0.0487 (10)	0.0710 (13)	0.0524 (10)	-0.0027 (9)	0.0240 (9)	0.0115 (9)
C12	0.0692 (14)	0.0959 (17)	0.0673 (14)	-0.0293 (13)	0.0171 (11)	-0.0094 (13)

Geometric parameters (Å, °)

C11—C1	1.7384 (17)	C11—H11	0.9300
N2—C1	1.314 (2)	C5—H5A	0.9600
N2—C2	1.357 (2)	C5—H5B	0.9600
N3—C1	1.321 (2)	C5—H5C	0.9600
N3—C4	1.337 (2)	C10—C9	1.367 (4)
F1—C3	1.3533 (19)	C10—H10	0.9300
C4—N1	1.347 (2)	C8—C9	1.371 (4)
C4—C3	1.400 (2)	C8—C7	1.391 (3)
C3—C2	1.357 (2)	C8—H8	0.9300
N1—C6	1.433 (2)	C9—H9	0.9300
N1—H1	0.8600	C7—C12	1.488 (3)
C2—C5	1.494 (2)	C12—H12A	0.9600
C6—C11	1.383 (3)	C12—H12B	0.9600
C6—C7	1.385 (2)	C12—H12C	0.9600
C11—C10	1.384 (3)		
C1—N2—C2	114.88 (14)	C2—C5—H5B	109.5

C1—N3—C4	115.01 (14)	H5A—C5—H5B	109.5
N2—C1—N3	130.53 (16)	C2—C5—H5C	109.5
N2—C1—C11	115.19 (12)	H5A—C5—H5C	109.5
N3—C1—C11	114.28 (12)	H5B—C5—H5C	109.5
N3—C4—N1	119.86 (14)	C9—C10—C11	119.3 (2)
N3—C4—C3	118.98 (14)	C9—C10—H10	120.4
N1—C4—C3	121.15 (15)	C11—C10—H10	120.4
F1—C3—C2	121.27 (15)	C9—C8—C7	121.3 (2)
F1—C3—C4	117.46 (14)	C9—C8—H8	119.3
C2—C3—C4	121.27 (16)	C7—C8—H8	119.3
C4—N1—C6	124.73 (14)	C10—C9—C8	121.0 (2)
C4—N1—H1	117.6	C10—C9—H9	119.5
C6—N1—H1	117.6	C8—C9—H9	119.5
N2—C2—C3	119.31 (15)	C6—C7—C8	117.0 (2)
N2—C2—C5	117.72 (16)	C6—C7—C12	121.83 (17)
C3—C2—C5	122.97 (17)	C8—C7—C12	121.2 (2)
C11—C6—C7	122.05 (17)	C7—C12—H12A	109.5
C11—C6—N1	117.67 (16)	C7—C12—H12B	109.5
C7—C6—N1	120.19 (16)	H12A—C12—H12B	109.5
C6—C11—C10	119.4 (2)	C7—C12—H12C	109.5
C6—C11—H11	120.3	H12A—C12—H12C	109.5
C10—C11—H11	120.3	H12B—C12—H12C	109.5
C2—C5—H5A	109.5		
C2—N2—C1—N3	0.5 (3)	F1—C3—C2—C5	0.8 (3)
C2—N2—C1—C11	-178.98 (11)	C4—C3—C2—C5	-179.72 (17)
C4—N3—C1—N2	0.6 (3)	C4—N1—C6—C11	109.29 (19)
C4—N3—C1—C11	-179.90 (11)	C4—N1—C6—C7	-74.2 (2)
C1—N3—C4—N1	179.34 (15)	C7—C6—C11—C10	0.2 (3)
C1—N3—C4—C3	-1.3 (2)	N1—C6—C11—C10	176.61 (17)
N3—C4—C3—F1	-179.39 (14)	C6—C11—C10—C9	-0.5 (3)
N1—C4—C3—F1	-0.1 (2)	C11—C10—C9—C8	0.6 (4)
N3—C4—C3—C2	1.1 (2)	C7—C8—C9—C10	-0.4 (4)
N1—C4—C3—C2	-179.61 (16)	C11—C6—C7—C8	0.0 (3)
N3—C4—N1—C6	-0.9 (3)	N1—C6—C7—C8	-176.33 (16)
C3—C4—N1—C6	179.75 (16)	C11—C6—C7—C12	-179.19 (18)
C1—N2—C2—C3	-0.8 (2)	N1—C6—C7—C12	4.5 (3)
C1—N2—C2—C5	178.99 (16)	C9—C8—C7—C6	0.1 (3)
F1—C3—C2—N2	-179.44 (14)	C9—C8—C7—C12	179.3 (2)
C4—C3—C2—N2	0.1 (3)		

Hydrogen-bond geometry (\AA , $^\circ$)

$D-H\cdots A$	$D-H$	$H\cdots A$	$D\cdots A$	$D-H\cdots A$
N1—H1 \cdots N2 ⁱ	0.86	2.34	3.0768 (19)	145

Symmetry code: (i) $x, -y+1/2, z-1/2$.