

Acta Crystallographica Section E

## Structure Reports

Online

ISSN 1600-5368

***N,N'*-[*(2E,3E)*-Butane-2,3-diylidene]bis[4-fluoro-2-(1-phenylethyl)aniline]**

Juanjuan Wei, Houde She,\* Lijun Shi and Ziqiang Lei

Key Laboratory of Eco-Environment-Related Polymer Materials of the Ministry of Education, Key Laboratory of Polymer Materials of Gansu Province, College of Chemistry & Chemical Engineering, Northwest Normal University, Lanzhou 730070, People's Republic of China

Correspondence e-mail: she\_houde@163.com

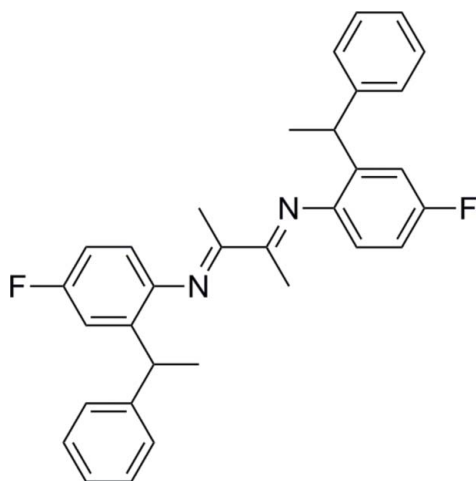
Received 18 December 2013; accepted 5 February 2014

Key indicators: single-crystal X-ray study;  $T = 295$  K; mean  $\sigma(\text{C}-\text{C}) = 0.002$  Å;  $R$  factor = 0.040;  $wR$  factor = 0.118; data-to-parameter ratio = 15.1.

The title molecule,  $\text{C}_{32}\text{H}_{30}\text{F}_2\text{N}_2$ , a product of the condensation reaction of butane-2,3-dione and 4-fluoro-2-(1-phenylethyl)aniline, is located about an inversion centre. In the asymmetric unit, the dihedral angle between the planes of the benzene and phenyl rings is  $84.27(5)^\circ$ . Neither hydrogen bonding nor aromatic stacking is observed in the crystal structure.

## Related literature

For the synthesis of  $\alpha$ -diimine ligands, see: Grasa *et al.* (2001); Williams *et al.* (2008); Hanhan *et al.* (2012); Partyka (2011); Yuan *et al.* (2012). For related structures, see: Zou *et al.* (2008); Lohr *et al.* (2011).



## Experimental

## Crystal data

$\text{C}_{32}\text{H}_{30}\text{F}_2\text{N}_2$   
 $M_r = 480.58$   
 Monoclinic,  $P2_1/n$   
 $a = 11.5335(11)$  Å  
 $b = 9.5024(12)$  Å  
 $c = 12.1318(14)$  Å  
 $\beta = 91.660(11)^\circ$

$V = 1329.0(3)$  Å<sup>3</sup>  
 $Z = 2$   
 Cu  $K\alpha$  radiation  
 $\mu = 0.64$  mm<sup>-1</sup>  
 $T = 295$  K  
 $0.35 \times 0.28 \times 0.26$  mm

## Data collection

Bruker APEXII CCD  
 diffractometer  
 Absorption correction: multi-scan  
 (*SADABS*; Bruker, 2008)  
 $T_{\min} = 0.808$ ,  $T_{\max} = 0.852$

5982 measured reflections  
 2507 independent reflections  
 2132 reflections with  $I > 2\sigma(I)$   
 $R_{\text{int}} = 0.019$

## Refinement

$R[F^2 > 2\sigma(F^2)] = 0.040$   
 $wR(F^2) = 0.118$   
 $S = 1.07$   
 2507 reflections

166 parameters  
 H-atom parameters constrained  
 $\Delta\rho_{\text{max}} = 0.18$  e Å<sup>-3</sup>  
 $\Delta\rho_{\text{min}} = -0.15$  e Å<sup>-3</sup>

Data collection: *APEX2* (Bruker, 2008); cell refinement: *SAINT* (Bruker, 2008); data reduction: *SAINT*; program(s) used to solve structure: *SHELXS97* (Sheldrick, 2008); program(s) used to refine structure: *SHELXL97* (Sheldrick, 2008); molecular graphics: *SHELXTL* (Sheldrick, 2008); software used to prepare material for publication: *SHELXTL*.

We gratefully acknowledge the Natural Science Foundation of China (21261021), the Program for Changjiang Scholars and Innovative Research Teams in Universities of the Ministry of Education of China (IRT1177), the Natural Science Foundation of Gansu Province (1208RJZA140) and the NWNNU Young Teachers Research Improving Program (NWNNU-LKQN-10-11) for financial support.

Supporting information for this paper is available from the IUCr electronic archives (Reference: RK2419).

## References

- Bruker (2008). *APEX2*, *SAINT* and *SADABS*. Bruker AXS Inc., Madison, Wisconsin, USA.
- Grasa, G. A., Hillier, A. C. & Nolan, S. P. (2001). *Org. Lett.* **3**, 1077-1080.
- Hanhan, M. E., Martínez-Máñez, R. & Ros-Lis, J. V. (2012). *Tetrahedron Lett.* **53**, 2388-2391.
- Lohr, T. L., Piers, W. E. & Parvez, M. (2011). *Acta Cryst.* **E67**, o2281.
- Partyka, D. V. (2011). *Chem. Rev.* **111**, 1529-1595.
- Sheldrick, G. M. (2008). *Acta Cryst.* **A64**, 112-122.
- Williams, T. J., Caffyn, A. J. M., Hazari, N., Oblad, P. F., Labinger, J. A. & Bercaw, J. E. (2008). *J. Am. Chem. Soc.* **130**, 2418-2419.
- Yuan, J., Xie, X., Liu, Y., Miao, C. & Li, J. (2012). *Acta Cryst.* **E68**, o210.
- Zou, H., Hou, Y., Yong, X., Cen, Y. & Bao, F. (2008). *Acta Cryst.* **E64**, o567.

## supporting information

*Acta Cryst.* (2014). E70, o275 [doi:10.1107/S1600536814002657]

***N,N'*-[*(2E,3E)*-Butane-2,3-diylidene]bis[4-fluoro-2-(1-phenylethyl)aniline]****Juanjuan Wei, Houde She, Lijun Shi and Ziqiang Lei****S1. Comment**

An  $\alpha$ -diimine ligands with different electronic property, rigidity and steric hindrance has been widely synthesized due to their significant applications in catalysis, coordination chemistry and carbene chemistry (Grasa *et al.*, 2001; Williams *et al.*, 2008; Hanhan *et al.*, 2012; Partyka, 2011; Yuan *et al.*, 2012). As part of our research efforts focused on developing ligands and organic catalysts, a novel series of imine derivatives were synthesized. Herein, we report the preparation and crystal structure of the title compound (Fig. 1).

The title molecule, is a symmetrical structure, and the central butanediimine moiety ( $\text{N}=\text{C}(\text{Me})-\text{C}(\text{Me})=\text{N}$ ) is planar. The dihedral angles between the benzene ring C8-C13 and benzene ring C1-C6 is  $84.27(5)^\circ$ . The molecular dimensions in the title compound agree very well with the corresponding one reported in a few closely related compounds (Zou *et al.*, 2008; Lohr *et al.* 2011).

**S2. Experimental**

Formic acid (1.0 ml) was added to a stirred solution of 4-fluoro-2-(1-phenylethyl)aniline (1.5 mmol) and 2,3-butanedione (0.7 mmol) in 20 ml anhydrous methanol (20 ml). The mixture was stirred at 323 K for 24 h, then cooled, and the precipitate was separated by filtration. The solid was recrystallized from ethanol/dichloromethane ( $v/v = 12:1$ ), washed with cold ethanol and dried under vacuum to give the title compound (Fig. 2). Yield is 82%. Crystals suitable for X-ray diffraction were grown in cyclohexane/dichloromethane ( $v/v = 1:2$ ) solution at room temperature by the slow evaporation method.  $^1\text{H}$  NMR (400 MHz,  $\text{CDCl}_3$ ):  $\delta$  (p.p.m.) 7.19(t,  $J = 7.4$  Hz, 4H), 7.09-7.13 (m, 4H), 7.01-7.05(m, 4H), 6.93 (dt,  $J = 8.4, 2.9$  Hz, 2H), 6.47 (dd,  $J = 8.6, 5.3$  Hz, 2H), 4.08 (q,  $J = 6.8$  Hz, 2H), 1.62 (s, 6H), 1.56 (d,  $J = 7.2$  Hz, 6H).  $^{13}\text{C}$  NMR (100 MHz,  $\text{CDCl}_3$ ):  $\delta$  (p.p.m.) 168.54, 161.22, 158.82, 145.58, 144.69, 137.34, 128.31, 127.57, 126.06, 118.94, 113.58, 40.17, 21.42, 20.86.

**S3. Refinement**

All hydrogen atoms were placed in calculated positions with C–H distances of 0.93Å, 0.96Å and 0.98Å for aryl, methyl and methine H atoms. They were included in the refinement in a riding model approximation, respectively with  $U_{\text{iso}} = 1.2U_{\text{eq}}(\text{C})$  for aryl and methine H, and  $U_{\text{iso}} = 1.5U_{\text{eq}}(\text{C})$  for methyl H.

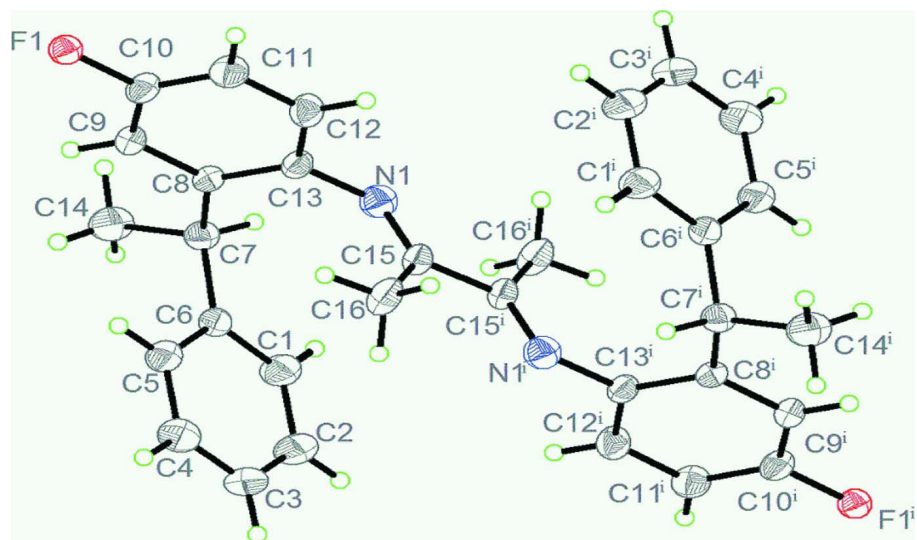


Figure 1

The molecular structure of title molecule with the atom numbering scheme. Displacement ellipsoids are drawn at 30% probability level. Symmetry code: (i)  $-x+1, -y+1, -z+1$ .

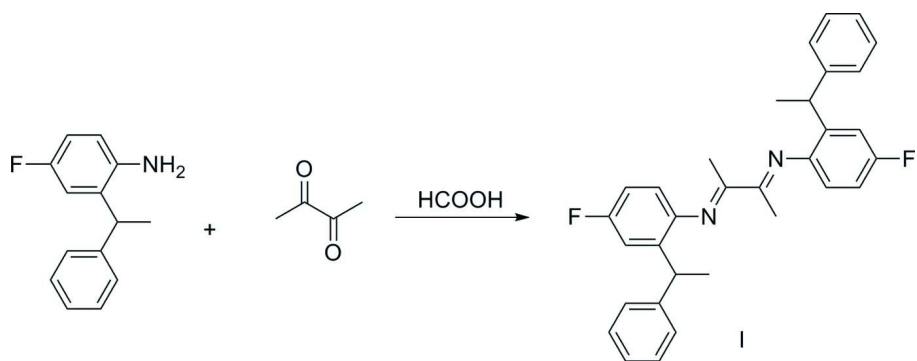


Figure 2

A condensation reaction of 2,3-butanedione and 4-fluoro-2-(1-phenylethyl)aniline.

*N,N'*-[(2*E*,3*E*)-Butane-2,3-diylidene]bis[4-fluoro-2-(1-phenylethyl)aniline]

*Crystal data*

$C_{32}H_{30}F_2N_2$

$M_r = 480.58$

Monoclinic,  $P2_1/n$

$a = 11.5335$  (11) Å

$b = 9.5024$  (12) Å

$c = 12.1318$  (14) Å

$\beta = 91.660$  (11)°

$V = 1329.0$  (3) Å<sup>3</sup>

$Z = 2$

$F(000) = 508$

$D_x = 1.201$  Mg m<sup>-3</sup>

Cu  $K\alpha$  radiation,  $\lambda = 1.54184$  Å

Cell parameters from 2620 reflections

$\theta = 5.2$ – $70.8$ °

$\mu = 0.64$  mm<sup>-1</sup>

$T = 295$  K

Block, clear light yellow

$0.35 \times 0.28 \times 0.26$  mm

Data collection

Bruker APEXII CCD diffractometer	5982 measured reflections
Radiation source: fine-focus sealed tube	2507 independent reflections
Graphite monochromator	2132 reflections with $I > 2\sigma(I)$
$\varphi$ and $\omega$ scans	$R_{\text{int}} = 0.019$
Absorption correction: multi-scan (SADABS; Bruker, 2008)	$\theta_{\text{max}} = 70.5^\circ$ , $\theta_{\text{min}} = 5.2^\circ$
$T_{\text{min}} = 0.808$ , $T_{\text{max}} = 0.852$	$h = -14 \rightarrow 12$
	$k = -11 \rightarrow 10$
	$l = -14 \rightarrow 14$

Refinement

Refinement on $F^2$	Hydrogen site location: inferred from neighbouring sites
Least-squares matrix: full	H-atom parameters constrained
$R[F^2 > 2\sigma(F^2)] = 0.040$	$w = 1/[\sigma^2(F_o^2) + (0.056P)^2 + 0.1881P]$
$wR(F^2) = 0.118$	where $P = (F_o^2 + 2F_c^2)/3$
$S = 1.07$	$(\Delta/\sigma)_{\text{max}} < 0.001$
2507 reflections	$\Delta\rho_{\text{max}} = 0.18 \text{ e } \text{Å}^{-3}$
166 parameters	$\Delta\rho_{\text{min}} = -0.15 \text{ e } \text{Å}^{-3}$
0 restraints	Extinction correction: SHELXL97 (Sheldrick, 2008), $F_c^* = kFc^*[1 + 0.001x \text{Fc}^2 \lambda^3 / \sin(2\theta)]^{-1/4}$
Primary atom site location: structure-invariant direct methods	Extinction coefficient: 0.0100 (10)
Secondary atom site location: difference Fourier map	

Special details

**Geometry.** All s.u.'s (except the s.u. in the dihedral angle between two l.s. planes) are estimated using the full covariance matrix. The cell s.u.'s are taken into account individually in the estimation of s.u.'s in distances, angles and torsion angles; correlations between s.u.'s in cell parameters are only used when they are defined by crystal symmetry. An approximate (isotropic) treatment of cell s.u.'s is used for estimating s.u.'s involving l.s. planes.

**Refinement.** Refinement of  $F^2$  against ALL reflections. The weighted  $R$ -factor  $wR$  and goodness of fit  $S$  are based on  $F^2$ , conventional  $R$ -factors  $R$  are based on  $F$ , with  $F$  set to zero for negative  $F^2$ . The threshold expression of  $F^2 > \sigma(F^2)$  is used only for calculating  $R$ -factors(gt) etc. and is not relevant to the choice of reflections for refinement.  $R$ -factors based on  $F^2$  are statistically about twice as large as those based on  $F$ , and  $R$ -factors based on ALL data will be even larger.

Fractional atomic coordinates and isotropic or equivalent isotropic displacement parameters ( $\text{Å}^2$ )

	$x$	$y$	$z$	$U_{\text{iso}}^*/U_{\text{eq}}$
N1	0.37261 (9)	0.49441 (12)	0.57384 (9)	0.0406 (3)
F1	-0.02542 (7)	0.78857 (12)	0.66670 (9)	0.0687 (3)
C1	0.57482 (13)	0.64883 (19)	0.75155 (16)	0.0602 (4)
H1	0.5841	0.5539	0.7683	0.072*
C2	0.67019 (14)	0.7270 (2)	0.72255 (19)	0.0747 (6)
H2	0.7426	0.6844	0.7197	0.090*
C3	0.65862 (15)	0.8671 (2)	0.69791 (18)	0.0743 (6)
H3	0.7224	0.9194	0.6769	0.089*
C4	0.55119 (15)	0.9295 (2)	0.70466 (16)	0.0687 (5)
H4	0.5430	1.0251	0.6899	0.082*
C5	0.45519 (13)	0.85116 (16)	0.73331 (14)	0.0543 (4)
H5	0.3832	0.8946	0.7371	0.065*
C6	0.46540 (11)	0.70923 (15)	0.75624 (11)	0.0420 (3)
C7	0.36098 (11)	0.61988 (15)	0.78526 (11)	0.0419 (3)
H7	0.3860	0.5215	0.7814	0.050*

C8	0.26187 (10)	0.63660 (13)	0.70095 (10)	0.0361 (3)
C9	0.16094 (11)	0.71082 (15)	0.72229 (11)	0.0422 (3)
H9	0.1525	0.7555	0.7898	0.051*
C10	0.07376 (11)	0.71744 (15)	0.64271 (13)	0.0468 (3)
C11	0.08083 (12)	0.65451 (17)	0.54169 (13)	0.0518 (4)
H11	0.0199	0.6601	0.4899	0.062*
C12	0.18142 (12)	0.58231 (17)	0.51907 (11)	0.0488 (4)
H12	0.1885	0.5385	0.4510	0.059*
C13	0.27209 (11)	0.57440 (14)	0.59672 (10)	0.0379 (3)
C14	0.32418 (14)	0.6453 (2)	0.90437 (13)	0.0628 (5)
H14A	0.3068	0.7433	0.9142	0.094*
H14B	0.3862	0.6185	0.9545	0.094*
H14C	0.2566	0.5902	0.9188	0.094*
C15	0.44839 (10)	0.54573 (14)	0.51063 (10)	0.0399 (3)
C16	0.44521 (14)	0.68862 (16)	0.45826 (14)	0.0558 (4)
H16A	0.3815	0.7414	0.4862	0.084*
H16B	0.4356	0.6788	0.3798	0.084*
H16C	0.5165	0.7371	0.4753	0.084*

*Atomic displacement parameters (Å<sup>2</sup>)*

	$U^{11}$	$U^{22}$	$U^{33}$	$U^{12}$	$U^{13}$	$U^{23}$
N1	0.0385 (6)	0.0450 (6)	0.0388 (6)	0.0027 (5)	0.0096 (4)	-0.0018 (5)
F1	0.0418 (5)	0.0843 (7)	0.0801 (7)	0.0223 (4)	0.0027 (4)	-0.0130 (5)
C1	0.0394 (7)	0.0582 (10)	0.0828 (11)	0.0038 (7)	-0.0031 (7)	-0.0062 (8)
C2	0.0369 (8)	0.0801 (13)	0.1072 (16)	-0.0020 (8)	0.0043 (9)	-0.0174 (11)
C3	0.0512 (9)	0.0828 (13)	0.0896 (13)	-0.0260 (9)	0.0173 (9)	-0.0201 (11)
C4	0.0681 (11)	0.0520 (10)	0.0868 (13)	-0.0131 (8)	0.0148 (10)	-0.0048 (8)
C5	0.0465 (8)	0.0472 (8)	0.0698 (10)	0.0001 (6)	0.0093 (7)	-0.0048 (7)
C6	0.0372 (6)	0.0461 (8)	0.0427 (7)	-0.0009 (5)	-0.0001 (5)	-0.0071 (6)
C7	0.0396 (7)	0.0438 (7)	0.0423 (7)	-0.0011 (5)	0.0004 (5)	0.0002 (6)
C8	0.0328 (6)	0.0381 (7)	0.0377 (6)	-0.0033 (5)	0.0066 (5)	-0.0001 (5)
C9	0.0387 (6)	0.0454 (7)	0.0431 (7)	0.0000 (5)	0.0085 (5)	-0.0065 (5)
C10	0.0341 (6)	0.0484 (8)	0.0583 (8)	0.0063 (5)	0.0066 (6)	-0.0022 (6)
C11	0.0407 (7)	0.0626 (9)	0.0515 (8)	0.0045 (6)	-0.0070 (6)	-0.0020 (7)
C12	0.0481 (8)	0.0597 (9)	0.0386 (7)	0.0038 (6)	0.0011 (6)	-0.0071 (6)
C13	0.0353 (6)	0.0406 (7)	0.0383 (6)	0.0003 (5)	0.0087 (5)	0.0010 (5)
C14	0.0585 (9)	0.0879 (13)	0.0420 (8)	-0.0129 (9)	0.0003 (7)	0.0006 (8)
C15	0.0411 (7)	0.0427 (7)	0.0363 (6)	0.0042 (6)	0.0088 (5)	-0.0019 (5)
C16	0.0559 (8)	0.0505 (9)	0.0623 (9)	0.0119 (7)	0.0237 (7)	0.0108 (7)

*Geometric parameters (Å, °)*

N1—C15	1.2761 (16)	C8—C9	1.3917 (17)
N1—C13	1.4204 (15)	C8—C13	1.4039 (17)
F1—C10	1.3673 (15)	C9—C10	1.375 (2)
C1—C2	1.382 (2)	C9—H9	0.9300
C1—C6	1.3890 (19)	C10—C11	1.368 (2)

C1—H1	0.9300	C11—C12	1.382 (2)
C2—C3	1.370 (3)	C11—H11	0.9300
C2—H2	0.9300	C12—C13	1.3892 (19)
C3—C4	1.378 (3)	C12—H12	0.9300
C3—H3	0.9300	C14—H14A	0.9600
C4—C5	1.387 (2)	C14—H14B	0.9600
C4—H4	0.9300	C14—H14C	0.9600
C5—C6	1.381 (2)	C15—C16	1.4992 (19)
C5—H5	0.9300	C15—C15 <sup>i</sup>	1.502 (2)
C6—C7	1.5231 (18)	C16—H16A	0.9600
C7—C8	1.5200 (18)	C16—H16B	0.9600
C7—C14	1.537 (2)	C16—H16C	0.9600
C7—H7	0.9800		
C15—N1—C13	119.34 (11)	C10—C9—H9	120.3
C2—C1—C6	121.28 (17)	C8—C9—H9	120.3
C2—C1—H1	119.4	F1—C10—C11	118.60 (13)
C6—C1—H1	119.4	F1—C10—C9	118.19 (13)
C3—C2—C1	120.33 (16)	C11—C10—C9	123.20 (12)
C3—C2—H2	119.8	C10—C11—C12	117.84 (13)
C1—C2—H2	119.8	C10—C11—H11	121.1
C2—C3—C4	119.17 (16)	C12—C11—H11	121.1
C2—C3—H3	120.4	C11—C12—C13	120.79 (13)
C4—C3—H3	120.4	C11—C12—H12	119.6
C3—C4—C5	120.61 (17)	C13—C12—H12	119.6
C3—C4—H4	119.7	C12—C13—C8	120.45 (12)
C5—C4—H4	119.7	C12—C13—N1	119.94 (12)
C6—C5—C4	120.71 (15)	C8—C13—N1	119.45 (11)
C6—C5—H5	119.6	C7—C14—H14A	109.5
C4—C5—H5	119.6	C7—C14—H14B	109.5
C5—C6—C1	117.87 (14)	H14A—C14—H14B	109.5
C5—C6—C7	121.83 (12)	C7—C14—H14C	109.5
C1—C6—C7	120.30 (13)	H14A—C14—H14C	109.5
C8—C7—C6	111.74 (11)	H14B—C14—H14C	109.5
C8—C7—C14	113.17 (12)	N1—C15—C16	126.30 (12)
C6—C7—C14	111.80 (12)	N1—C15—C15 <sup>i</sup>	116.24 (15)
C8—C7—H7	106.5	C16—C15—C15 <sup>i</sup>	117.44 (14)
C6—C7—H7	106.5	C15—C16—H16A	109.5
C14—C7—H7	106.5	C15—C16—H16B	109.5
C9—C8—C13	118.26 (12)	H16A—C16—H16B	109.5
C9—C8—C7	122.99 (12)	C15—C16—H16C	109.5
C13—C8—C7	118.74 (11)	H16A—C16—H16C	109.5
C10—C9—C8	119.41 (12)	H16B—C16—H16C	109.5
C6—C1—C2—C3	0.2 (3)	C7—C8—C9—C10	-178.02 (13)
C1—C2—C3—C4	1.3 (3)	C8—C9—C10—F1	178.66 (12)
C2—C3—C4—C5	-1.6 (3)	C8—C9—C10—C11	-0.3 (2)
C3—C4—C5—C6	0.4 (3)	F1—C10—C11—C12	-179.60 (13)

---

C4—C5—C6—C1	1.1 (2)	C9—C10—C11—C12	-0.7 (2)
C4—C5—C6—C7	-178.53 (14)	C10—C11—C12—C13	0.0 (2)
C2—C1—C6—C5	-1.4 (2)	C11—C12—C13—C8	1.7 (2)
C2—C1—C6—C7	178.26 (16)	C11—C12—C13—N1	177.16 (13)
C5—C6—C7—C8	51.52 (17)	C9—C8—C13—C12	-2.62 (19)
C1—C6—C7—C8	-128.13 (14)	C7—C8—C13—C12	177.29 (12)
C5—C6—C7—C14	-76.48 (18)	C9—C8—C13—N1	-178.09 (11)
C1—C6—C7—C14	103.86 (17)	C7—C8—C13—N1	1.83 (18)
C6—C7—C8—C9	-107.17 (14)	C15—N1—C13—C12	77.96 (17)
C14—C7—C8—C9	20.09 (19)	C15—N1—C13—C8	-106.56 (14)
C6—C7—C8—C13	72.91 (15)	C13—N1—C15—C16	2.1 (2)
C14—C7—C8—C13	-159.82 (13)	C13—N1—C15—C15 <sup>i</sup>	-179.36 (13)
C13—C8—C9—C10	1.89 (19)		

---

Symmetry code: (i)  $-x+1, -y+1, -z+1$ .